

THE CRUISE BOOK



The Cruising Club of America
2018 Winter Cruise
Hauraki Gulf, New Zealand
16 March to 27 March 2018



TABLE OF CONTENTS

	PAGE
2018 Winter Cruise Committee, Dedication, About the Logo	3
Welcome from the Commodore	4
Welcome from the Cruise Chair	5
The Cruise Itinerary, Cruise Packets	6
Chart, Cruise Itinerary	7
Communications, Emergencies	8
Weather	9
Charts and Cruising Guides Information, Navigation, Buried Cables	10
Tides	11
Provisioning: Fresh Water, Fuel, Groceries; Garbage Disposal	12
Title: Cruise Day-by-Day	13
16 Friday - Registration and Opening Reception- RNZYS, Auckland	14
Charts, Auckland, Westhaven Marina, Viaduct Basin	15
17 Saturday to 19 Monday - Sail Auckland to Kawau Island	16
Chart, Sail Auckland to Kawau Island	17
19 Monday - Cocktails and Dinner - Lidgard House - RNZYS Outstation, Kawau Island	18
Chart, Bon Accord Harbour, Kawau Island	19
20 Tuesday to 21 Wednesday - Sail, Kawau to Great Barrier Island	20
Chart, Kawau to Great Barrier Island	21
21 Wednesday - Reception - Port Fitzroy Boat Club, Great Barrier Island	22
Chart, Port Fitzroy, Great Barrier Island	23
22 Thursday to 24 Saturday - Sail, Great Barrier Island to Coromandel Peninsula	24
Chart, Great Barrier Island to Coromandel Peninsula	25
24 Saturday - Lunch - Pepper Tree Restaurant, Coromandel Township	26
Chart, Coromandel Township	27
25 Sunday to 26 Monday - Sail, Coromandel to Waiheke Island	28
Chart, Coromandel to Man O'War Bay, Waiheke Island	29
26 Monday - Activities and Closing Dinner - Man O'War Vineyard, Waiheke Island	30
Chart, Man O'War Bay, Waiheke Island	31
27 Tuesday - Cruise Disbands	32

Charts are for information only and NOT to be used for navigation.

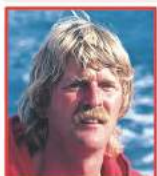
THE 2018 WINTER CRUISE COMMITTEE

PAM AND MICK BACICH
BARBARA AND STEVE BARNARD
JERI AND BILL BARSZ
JOHN JOURDANE
LISA LAING

JILL AND JIM MORGAN
HARRIET AND PETE PALLETTE
LARRY SOMERS
LINDA AND TOD WHITE
CORKY AND BOB WINTERS

DEDICATION

The Cruising Club of America 2018 Winter Cruise in the Hauraki Gulf, New Zealand
Is dedicated to
the memory and spirit of
Sir Peter Blake



Sir Peter James Blake, KBE (1 October 1948 – 5 December 2001) was a New Zealand yachtsman who won the 1989–90 Whitbread Round the World Race in *Steinlager 2*, held the Jules Verne Trophy from 1994 to 1997 by setting the fastest time around the world as co-skipper of *ENZA New Zealand*, and led his country to successive victories in the America's Cup in 1995 and 2000. Blake was inducted into the America's Cup Hall of Fame in 1996. In honour of his services to yachting, Blake was appointed a Knight Commander of the Order of the British Empire in 1995, and received an honorary doctorate in 2000 from Auckland University of Technology.

Blake was shot and killed by pirates while monitoring environment change on the Amazon River on 5 December 2001. At that time, he was at the age of 53 years. Sir Peter is survived by his wife Pippa, Lady Blake, and their two children Sarah-Jane and James.

In December 2003, the Sir Peter Blake Trust was established, with the support of the Blake family, "to help New Zealanders make a positive difference for the planet through activities that encourage environmental awareness and action, and leadership development." (excerpted from Wikipedia)



ABOUT THE CRUISE LOGO

THE KIWI:

New Zealand's national symbol is a nocturnal flightless bird with nostrils on the end of its large beak. The kiwi is now endangered, and difficult to see in the wild. However, there are a number of 'kiwi houses' at zoos and wildlife parks. While they may look cute, kiwi can be fierce and highly territorial.

MĀORI TATTOO - TĀ MOKO:

Tā moko – the art of Māori tattoo – is a unique expression of cultural heritage and identity. It reflects the individual's whakapapa (ancestry) and personal history. In earlier times, it was an important signifier of social rank, knowledge, skill and eligibility to marry.

THE SILVER FERN:

The Silver Fern is New Zealand's most iconic native plant. The undersides of its leaves are a beautiful silvery grey, and being indigenous to New Zealand they're found only here. You can see the silver fern on the jersey of their national rugby team, the All Blacks, incorporated into the logo of the national airline, Air New Zealand, cast into the New Zealand \$1 coin, and saturating the breath-taking landscapes of New Zealand's native bush. It is a distinctly New Zealand symbol.

Before Europeans colonised New Zealand, Maori valued the silver fern for a few reasons. They recognized it had healing properties. The fronds of the plant can be peeled, the starchy pith removed, and applied as a treatment for ulcers, boils and foot infections. Because of its bright underside, the leaf would be lain down at nighttime silver side up, and used as a marker for navigation. And finally, the silver fern acted as a food source. The pith was a great source of starch and the young fronds were also eaten. As a result, the fern symbol has always had an important meaning to Maori, and can be commonly seen in traditional Maori carving.



The Cruising Club of America

W. Bradford Willauer
Commodore
8 Sanctuary Lane
Prouts Neck, Maine
04074

Cruisers,

We all owe sincere thanks to the Southern California Station Host Committee for their efforts arranging the New Zealand Cruise. Chairman Pete Palette and his wife, Harriet, flew to Auckland last March to make all the arrangements we will enjoy over the next extended week, and personally examined most of the areas we will visit, dine, and often where we will anchor. They have paved the way for our enjoyment. When you run into them along the way, please offer them your thanks.

All of us are grateful for the assistance offered to us by Past Commodore Peter Taylor of the Royal New Zealand Yacht Squadron, who not only welcomed us into the RNZYS clubhouse, but introduced us to so many people we needed to know. We believe that Peter and his wife, Rita, may join us on the Cruise, and deserve personal thanks if you meet them.

After the Cruise, several of you will continue onwards to the South Island thanks to Jim and Jill Morgan where you will be treated to the many delights offered there, even an excursion out to Stewart Island, New Zealand's southernmost island.

Finally, Pete Palette and I have decided to dedicate this Cruise to Sir Peter Blake, New Zealand's most famous sailor who sailed five Whitbread Round the World Races, winning in 1989-1990, then headed the "Red Socks Campaign" which defeated the U.S. in the 1995 America's Cup, before his untimely death at the hands of pirates on the Amazon River in 2001. We are sure you will enjoy exploring the website of Sir Peter Blake's Trust at sirpeterblaketrust.org – we did.

Fair winds,

W. Bradford Willauer
Commodore



2018 Winter Cruise

Peter C. Pallette
Rear Commodore, SOC
1210 East Balboa Boulevard
Newport Beach, California
92661

To our Cruisers,

As host of the 2018 CCA Winter Cruise in New Zealand's Hauraki Gulf, the Southern California Station (SOC) and its Host Committee welcome you as we embark on our adventure to this exceptional country where the sailing is legendary, the topography enthralling, the local people gracious, and the activities we are about to experience enticing.

For those who were fortunate enough to participate in the CCA Winter Cruise to these waters in 1999, an event ably hosted by the San Francisco Station, you will find similarities. Because that cruise was so well planned and executed, we have chosen to replicate several of the elements which were favorably received. New land-falls have been added to replace those which are no longer accessible for one reason or another. And we have reversed course around the Gulf to account for the Easter Holidays, tidal timing, and shore facility availabilities. We are grateful to Bob Van Blaricom, the 1999 Cruise Chairman, and his SAF "mates" for providing the foundation for what we believe will be another extraordinary CCA GAM in this remarkable part of the world.

Finally, we thank the members of our SOC Host Committee, event coordinator Joanna Logan, and the always helpful Kiwis (too many to list herein) for their guidance and counsel, without which our Cruise would have been immensely difficult to plan. We are also grateful to Jim and Jill Morgan for developing our post-Cruise tour to the South Island. To Sir Peter Blake, truly an iconic New Zealand yachtsman, we demonstrate our admiration and respect by posthumously dedicating this Cruise in his honor and memory. And to our sailors, we wish each of you a rewarding and fulfilling experience as we ply the beautiful blue waters of the Hauraki Gulf.

Smooth sailing,

Pete Pallette
Cruise Chairman
Rear Commodore, SOC

THE CRUISING CLUB OF AMERICA

2018 WINTER CRUISE – NEW ZEALAND



THE CRUISE ITINERARY

Friday	16 March	Registration
Friday	16 March	Opening Reception* at Royal New Zealand Yacht Squadron, Auckland, New Zealand
Saturday	17 March	Sail toward Kawau Island
Sunday	18 March	Sail toward Kawau Island
Monday	19 March	Cocktails and Dinner at Lidgard House, RNZYS Outstation, Bon Accord Harbour, Kawau Island
Tuesday	20 March	Sail toward Great Barrier Island
Wednesday	21 March	Cocktails at The Boat Club, Port Fitzroy, Great Barrier Island
Thursday	22 March	Sail toward Coromandel Peninsula
Friday	23 March	Sail toward Coromandel Peninsula
Saturday	24 March	Lunch at the Pepper Tree Restaurant, Coromandel Township
Sunday	25 March	Sail toward Man O' War Bay, Waiheke Island
Monday	26 March	Closing Ceremony*/Activities at Man O' War Vineyards Man O' War Bay, Waiheke Island
Tuesday	27 March	Cruise disbands

*Note: Blue blazer (tie optional) for Opening and Closing events.

CRUISE PACKETS

Cruise Packets will be distributed prior to and during the Opening Reception at Royal New Zealand Yacht Squadron. Included will be an updated copy of the cruise roster and any last-minute changes to the arrangements. In addition, you will receive your personal name badges, a cruise flag for each boat, a Cruise memento for each couple and single participant, etc. If you do not receive your Cruise Packet, please contact the Cruise Chairman who will arrange to deliver it.



**CRUISING CLUB OF AMERICA
2018 WINTER CRUISE
16 MARCH - 27 MARCH**

**Land Information
New Zealand
NORTH ISLAND - EAST COAST
BREAM HEAD
TO
SLIPPER ISLAND
INCLUDING
HAURAKI GULF /
TĪKAPA MOANA**

DEPTHS IN METRES
SCALE 1:200 000 (41")

Depths in metres (unless otherwise stated) are measured to Chart Datum which is approximately Low Water Springs. Heights in metres, unless otherwise stated, are measured to Mean Sea Level. Navigational Marks, IALA Maritime Buoyage System. Positions are as World Geodetic System 1984 (WGS84). Projection: Mercator. Sources: For information as to the quality of the hydrographic data the General Data Diagram, 1:500,000, defines many more than information New Zealand can.

HYDROGRAPHIC DATA
The depths in this chart are measured to Chart Datum which is approximately Low Water Springs. Heights in metres, unless otherwise stated, are measured to Mean Sea Level. Navigational Marks, IALA Maritime Buoyage System. Positions are as World Geodetic System 1984 (WGS84). Projection: Mercator. Sources: For information as to the quality of the hydrographic data the General Data Diagram, 1:500,000, defines many more than information New Zealand can.

HYDROGRAPHIC DATA
The depths in this chart are measured to Chart Datum which is approximately Low Water Springs. Heights in metres, unless otherwise stated, are measured to Mean Sea Level. Navigational Marks, IALA Maritime Buoyage System. Positions are as World Geodetic System 1984 (WGS84). Projection: Mercator. Sources: For information as to the quality of the hydrographic data the General Data Diagram, 1:500,000, defines many more than information New Zealand can.

Place	Lat S	Long E	MHW	MWN	MLWN	MLWS
Manukau Harbour	36 50	174 30	2.7	2.0	0.8	0.4
Manukau Harbour	36 50	174 30	2.7	2.0	0.8	0.4
Manukau Harbour	36 50	174 30	2.7	2.0	0.8	0.4
Manukau Harbour	36 50	174 30	2.7	2.0	0.8	0.4

Place	Lat S	Long E	MHW	MWN	MLWN	MLWS
Manukau Harbour	36 50	174 30	2.7	2.0	0.8	0.4
Manukau Harbour	36 50	174 30	2.7	2.0	0.8	0.4
Manukau Harbour	36 50	174 30	2.7	2.0	0.8	0.4
Manukau Harbour	36 50	174 30	2.7	2.0	0.8	0.4

**#2 RNZYS LIDGARD HOUSE
KAWAU ISLAND
COCKTAIL & DINNER
MONDAY 19 MARCH**

**#1 RNZYS
WESTHAVEN MARINA
AUCKLAND
OPENING RECEPTION
FRIDAY 16 MARCH**

**#3 THE BOAT CLUB
PORT FITZROY
GREAT BARRIER ISLAND
COCKTAIL
WEDNESDAY 21 MARCH**

**#5 MAN O' WAR VINEYARDS
WAIHEKE ISLAND
ACTIVITIES, CLOSING DINNER
MONDAY 26 MARCH**

**#4 PEPPER TREE RESTAURANT
COROMANDEL TOWN
COROMANDEL
LUNCH
SATURDAY 24 MARCH**



COMMUNICATIONS

Larry Somers aboard, *Ika Moana II*, is our Communications Officer. To the extent practicable, he will monitor Channels 16 and 62. We will have a fleet radio broadcast each morning at 0830 on Channel 62 during the Cruise, on which we will attempt to offer meaningful updates, changes to the Cruise itinerary, and other items of common interest.

VHF Channels currently utilized in New Zealand, particularly in our Cruise area are:

Channel 16	Calling and emergency
Channel 16, 60, & 64	New Zealand Coastguard
Channel 6, 8, & 62	Vessel to vessel (line of sight)
Channel 3 & 62	Vessel to vessel (Repeater)
Channel 62	Will be used for fleet broadcasts

Weather "Nowcasting":

Channel 19	Auckland Inner Harbour (East)
Channel 20	Kawau Island
Channel 79	Outer Hauraki Gulf
Channel 19	Bay of Islands

Other:

Channel 73	Viaduct Harbour, Baywater and Gulf Harbour Marinas
Channel 13	Westhaven Marina
Channel 12	Auckland Ship Traffic (Monitor)

Cellular phones and email will be in use provided service is available.

NZ Coastguard & Rescue: Cellphone dial 500

Metphone (Weather): Cellphone dial 0900 999 99

Metphone (Weather): Internet www.metservice.co.nz

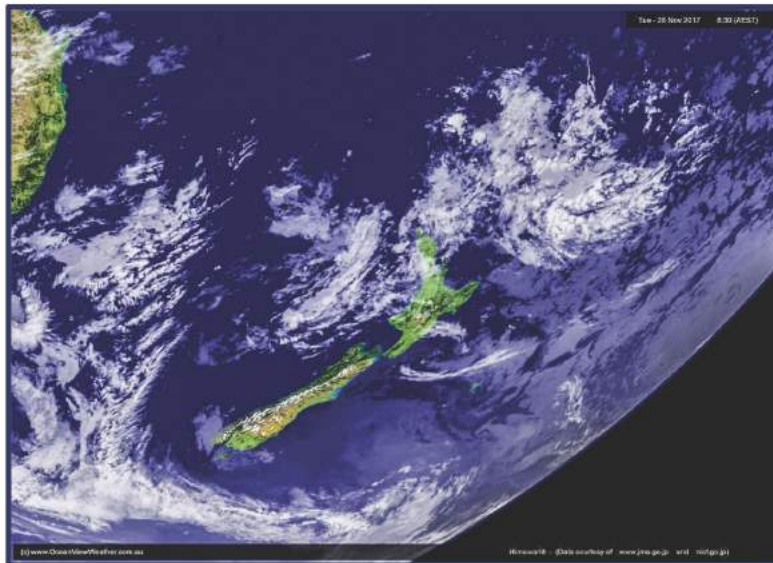


We encourage at least one person on each boat to have internet access during the Cruise to receive information from the Cruise Committee as might be necessary. Check with your internet wireless provider well prior to leaving for New Zealand to determine availability of services they may provide there. Alternative choices are to check on the internet for services for short periods of time available by means of SIM cards which might be used with your unlocked cell phone or tablet, and can be mailed to you before leaving the U.S.. SIM cards can be purchased for either data only (email), or both data and cell phone service. Another choice is to buy a SIM card at the airport when you arrive in New Zealand. Usually they can be installed by the provider at time of purchase.

EMERGENCIES

J. Walter Smith, M.D., has volunteered his services as Fleet Surgeon, ably assisted by his wife, Kathryn Crossland, M.D. Both will be found aboard *Good Life*. In their absence, major medical events which require a doctor's help should be handled accordingly. We suggest contacting a professional skipper aboard *Cool Change* or *Tawaki* for advice if an evacuation is warranted. Under way, contact New Zealand Coastguard on VHF 16, 60, or 64. Otherwise, in port contact shore-based authorities for assistance.

For serious groundings, underwater damage, etc., contact your charterer for advice.



WEATHER

The Cruise will take place in the late southern hemisphere summer, a time equivalent to our mid-September. This tends to be a very quiet time, with minimal strong winds or storm systems passing through. At this time of year, the majority of significant weather occurs well to the south of our cruising area. However, nothing regarding the weather is guaranteed in New Zealand, so remaining alert to changes is worthwhile.

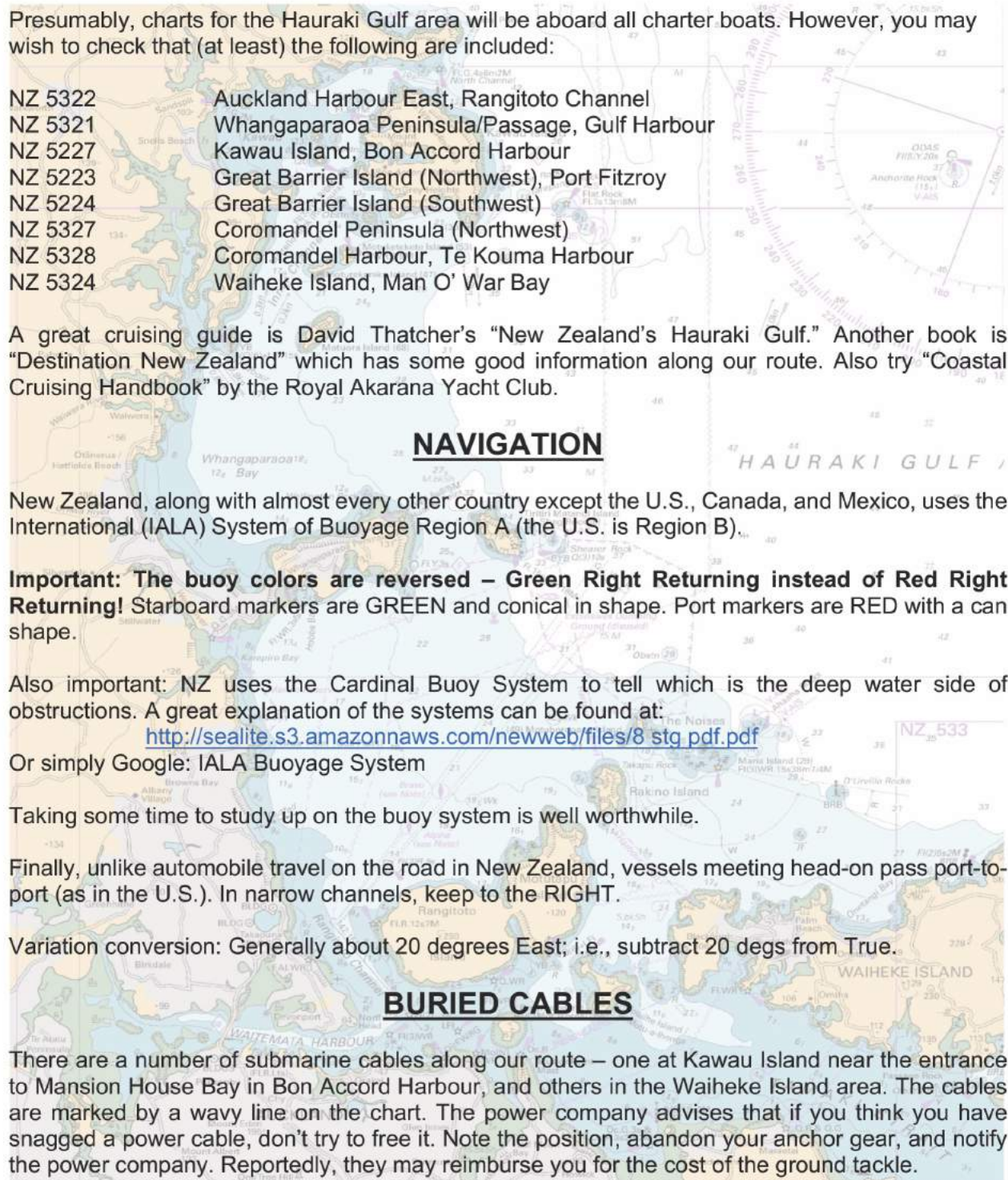
Depending on whom you ask, the prevailing wind in the Hauraki Gulf is in the northerly quadrant, or from the southwest (your choice). That said, in settled summer weather when there are no significant weather systems around to affect the wind flow, the usual pattern is daytime breezes generally from the northeast, and nighttime land breezes generally from the southwest.

A succession of lows and intervening troughs commonly pass over New Zealand to the south of the Hauraki Gulf. In such circumstances, the wind is from the northeast ahead of the trough, often with rain. After the trough goes through, the weather is likely to be clear with squally, cool southerly winds.

Continuous weather information is available on the "Nowcast" VHF Channels mentioned previously, and we will attempt to comment on meaningful changes during our morning fleet radio broadcasts at 0830.

CHARTS AND CRUISING GUIDES

Presumably, charts for the Hauraki Gulf area will be aboard all charter boats. However, you may wish to check that (at least) the following are included:



NZ 5322	Auckland Harbour East, Rangitoto Channel
NZ 5321	Whangaparaoa Peninsula/Passage, Gulf Harbour
NZ 5227	Kawau Island, Bon Accord Harbour
NZ 5223	Great Barrier Island (Northwest), Port Fitzroy
NZ 5224	Great Barrier Island (Southwest)
NZ 5327	Coromandel Peninsula (Northwest)
NZ 5328	Coromandel Harbour, Te Kouma Harbour
NZ 5324	Waiheke Island, Man O' War Bay

A great cruising guide is David Thatcher's "New Zealand's Hauraki Gulf." Another book is "Destination New Zealand" which has some good information along our route. Also try "Coastal Cruising Handbook" by the Royal Akarana Yacht Club.

NAVIGATION

New Zealand, along with almost every other country except the U.S., Canada, and Mexico, uses the International (IALA) System of Buoyage Region A (the U.S. is Region B).

Important: The buoy colors are reversed – Green Right Returning instead of Red Right Returning! Starboard markers are GREEN and conical in shape. Port markers are RED with a can shape.

Also important: NZ uses the Cardinal Buoy System to tell which is the deep water side of obstructions. A great explanation of the systems can be found at:

http://sealite.s3.amazonaws.com/newweb/files/8_stg.pdf.pdf

Or simply Google: IALA Buoyage System

Taking some time to study up on the buoy system is well worthwhile.

Finally, unlike automobile travel on the road in New Zealand, vessels meeting head-on pass port-to-port (as in the U.S.). In narrow channels, keep to the RIGHT.

Variation conversion: Generally about 20 degrees East; i.e., subtract 20 degs from True.

BURIED CABLES

There are a number of submarine cables along our route – one at Kawau Island near the entrance to Mansion House Bay in Bon Accord Harbour, and others in the Waiheke Island area. The cables are marked by a wavy line on the chart. The power company advises that if you think you have snagged a power cable, don't try to free it. Note the position, abandon your anchor gear, and notify the power company. Reportedly, they may reimburse you for the cost of the ground tackle.

TIDES

Here's an excerpted Tide Table for Auckland Harbour. Daylight Saving Time has been accounted for in the table.

Some corrections for high/low tides at other Gulf harbours are:

Bon Accord Harbour (Kawau) – subtract 22 minutes
 Port Fitzroy Harbour (Great Barrier) – subtract 8 minutes
 Te Kouma Harbour – subtract 16 minutes

NEW ZEALAND HYDROGRAPHIC AUTHORITY TIDE PREDICTIONS

AUCKLAND

Lat. 36° 51' S Long. 174° 46' E

MARCH 2018

N.Z. LOCAL TIMES AND HEIGHTS OF HIGH AND LOW WATERS

	Time	m		Time	m		Time	m		Time	m
1	0103	0.5	9	0136	3.0	17	0159	0.8	25	0202	3.2
	0731	3.4		0734	0.9		0823	3.1		0807	0.8
Th	1334	0.6	Fr	1354	3.0	Sa	1421	0.8	Su	1431	3.1
	2000	3.3		1957	0.9		2043	3.1		2033	0.7
2	0158	0.4	10	0226	2.9	18	0239	0.7	26	0303	3.1
	0825	3.5		0826	1.0		0904	3.2		0911	0.9
Fr	1429	0.5	Sa	1442	2.9	Su	1502	0.7	Mo	1532	3.1
	2054	3.4		2047	1.0		2124	3.2		2137	0.8
3	0250	0.3	11	0320	2.8	19	0319	0.7	27	0409	3.1
	0916	3.6		0922	1.1		0945	3.3		1016	0.9
Sa	1520	0.4	Su	1534	2.8	Mo	1544	0.6	Tu	1637	3.1
	2145	3.5		2144	1.1		2205	3.3		2243	0.8
4	0339	0.3	12	0418	2.8	20	0400	0.6	28	0513	3.2
	1005	3.6		1019	1.2		1027	3.3		1120	0.8
Su	1609	0.4	Mo	1630	2.7	Tu	1626	0.5	We	1743	3.1
	2233	3.5		2244	1.1		2247	3.3		2347	0.7
5	0426	0.4	13	0516	2.8	21	0442	0.6	29	0614	3.3
	1053	3.5		1114	1.1		1110	3.3		1220	0.7
Mo	1656	0.4	Tu	1727	2.7	We	1710	0.5	Th	1845	3.2
	2320	3.4		2341	1.1		2330	3.3			
6	0512	0.5	14	0609	2.8	22	0527	0.6	30	0046	0.6
	1139	3.4		1206	1.1		1156	3.3		0711	3.3
Tu	1741	0.5	We	1823	2.8	Th	1755	0.5	Fr	1316	0.6
										1942	3.3
7	0005	3.3	15	0032	1.0	23	0016	3.3	31	0140	0.5
	0558	0.6		0657	2.9		0616	0.7		0803	3.4
We	1224	3.3	Th	1253	1.0	Fr	1244	3.3	Sa	1408	0.5
	1826	0.6		1914	2.9		1843	0.6		2035	3.4
8	0050	3.2	16	0117	0.9	24	0106	3.2			
	0645	0.8		0742	3.0		0709	0.8			
Th	1309	3.1	Fr	1338	0.9	Sa	1335	3.2			
	1910	0.8		2000	3.0		1935	0.6			

TIMES LISTED ARE N.Z. DAYLIGHT TIME

PROVISIONING: FRESH WATER, FUEL, GROCERIES

Replenishment of stores, fuel, and water during the cruise may be accomplished at the following locations:

At **Bon Accord Harbour, Kawau Island** – The Kawau Boating Club, next to Lidgard House, has a wharf with fuel and water. A small store will be found at the head of the wharf.



THE KAWAU BOATING CLUB

At **Port Fitzroy, G.B.I.** – Water and fuel are available at the public wharf on the east side of the bay. Groceries and ice are available at the small store 100 metres up the road.

At **Tryphena Harbour, G.B.I.** – Water and fuel are available at the wharf at Shoal Bay. Two reasonably stocked stores are nearby.

At **Coromandel Township** – Water and fuel are available on the north side of the public wharf AT HIGH TIDE (the wharf is dry at low tide) in Coromandel Harbour. Groceries are available in Coromandel Township which can be accessed by dinghy at high tide by following the channel markers.

GARBAGE DISPOSAL

New Zealand is very environmentally conscious. There may be limited (or no) good opportunities to dispose of garbage along the way. Do not discharge any garbage overboard. Please be prepared to minimize, compact, and carry it aboard if necessary.



THE CRUISE DAY-BY-DAY



Friday, 16 March 2018 - 1530 HOURS
REGISTRATION

Friday, 16 March 2018 - 1730 HOURS
OPENING RECEPTION

COCKTAIL PARTY
ROYAL NEW ZEALAND YACHT SQUADRON



181 Westhaven Drive, Westhaven Marina, Auckland 1011
Tel: +64.9.60.6800 rnzys.org.nz

Cocktails and generous hors d'oeuvres will be served in the Dinghy Locker Bar at the RNZYS Clubhouse located near the Auckland Harbour Bridge over Waitemata Harbour.

Attire – Blazer preferred, tie optional.

Boats arriving from other areas and requiring berthing at Westhaven Marina should contact the Harbormaster on VHF channel 13 to make arrangements for berth location and payment. For those arriving by car, parking is available adjacent to the Clubhouse.

Cruise packets will be distributed at the party, at which beer, wine, and soft drinks will be complimentary. "Spirits" may be purchased by credit card.

The RNZYS has offered the hospitality of their Quarterdeck dining room for those who wish to stay for dinner, provided sufficient reservations are made not later than 9 March.



Auckland, New Zealand



Royal New Zealand Yacht Squadron
Westhaven Marina

Viaduct Basin



Saturday, 17 March - Monday, 19 March

COMMENCE CRUISE WITH SAIL TOWARD KAWAU ISLAND

Kawau Island is somewhat less than 30 miles north of Auckland, and there are several opportunities to overnight in a marina or cove en route. One such example is Gulf Harbour Marina, with over 1,000 slips. Management has been alerted that some of us may visit, so a call to the Harbormaster on VHF 73 should be made upon approach for a berth assignment. This is also home to Gulf Harbour Yacht Club, which may be available to us as visiting yachtsmen. Thereafter, the leg north to Bon Accord Harbour on Kawau Island is roughly 15 miles, an easy day sail.

Upon reaching Kawau Island, Bon Accord Harbour is midway up the west coast, and has a number of excellent anchorages on both the north and south sides. Mansion House Bay (near the entrance) is especially inviting. A visit to the restored residence of Governor Sir George Grey and a trek along adjacent hiking trails are highlights. Be on the lookout for wallabies.



**MANSION HOUSE BAY
KAWAU ISLAND**

This is a detailed nautical chart of the Hauraki Gulf and surrounding areas, including Whangaparaoa Bay, the Hauraki Gulf, and the Auckland Harbour. The chart shows various islands, reefs, and navigational hazards. Key locations include Whangaparaoa Bay, the Hauraki Gulf, the Auckland Harbour, and the surrounding landmasses. The chart is marked with numerous depth soundings, navigational aids, and geographical features. A compass rose is visible in the upper right corner, and a scale bar is located in the lower right corner. The chart is titled 'HAURAKI GULF' and 'NZ 533'.

Monday, 19 March 2018 – 1730 HOURS

**COCKTAILS AND DINNER
LIDGARD HOUSE, ROYAL NEW ZEALAND YACHT SQUADRON OUTSTATION**

Kawau Island 0920
Tel: +64.9.360.6800 rnzys.org.nz

On Monday, 19 March, we'll rendezvous at Lidgard House, RNZYS's charming Kawau outstation, for our second shore event – cocktails and dinner commencing around 1730. There is ample mooring room, good holding, and the dinghy dock should accommodate all of us. Each cruiser will be provided two drink tickets in their packets, and additional drinks/spirits may be purchased by credit card. Attire is "yachting casual."

The Kawau Boating Club is next door, and may be a limited source for water, fuel, and other supplies.

For those of you who know Lin and Larry Pardey, a quick sail around the corner to pretty North Cove, where their home is located, may provide an opportunity to say 'hello'. Lin expects to join us at Lidgard House.

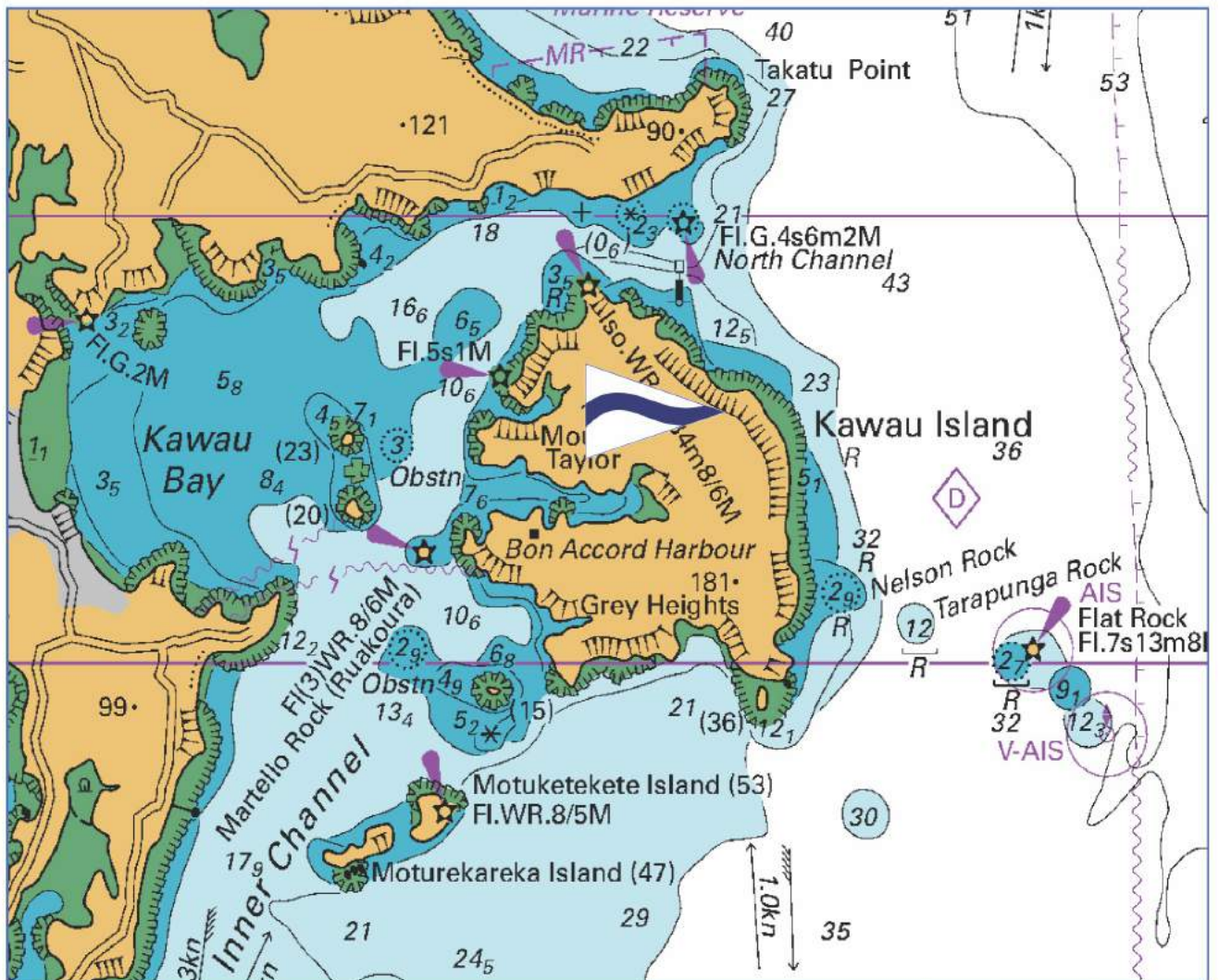


KAWAU BOATING CLUB



LIDGARD HOUSE

Kawau Island, Bon Accord Harbour Lidgard House

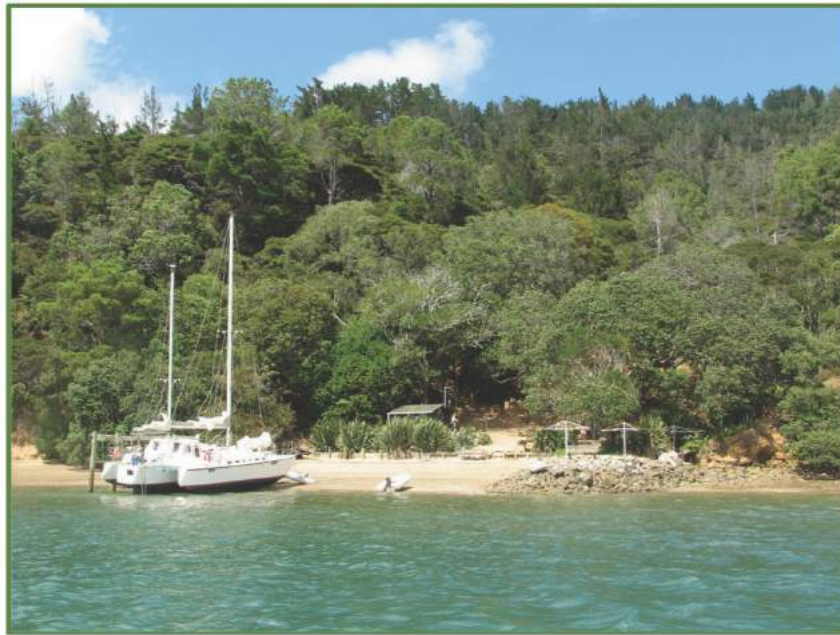


Tuesday, 20 March - Wednesday, 21 March

CONTINUE CRUISE WITH SAIL TOWARD GREAT BARRIER ISLAND

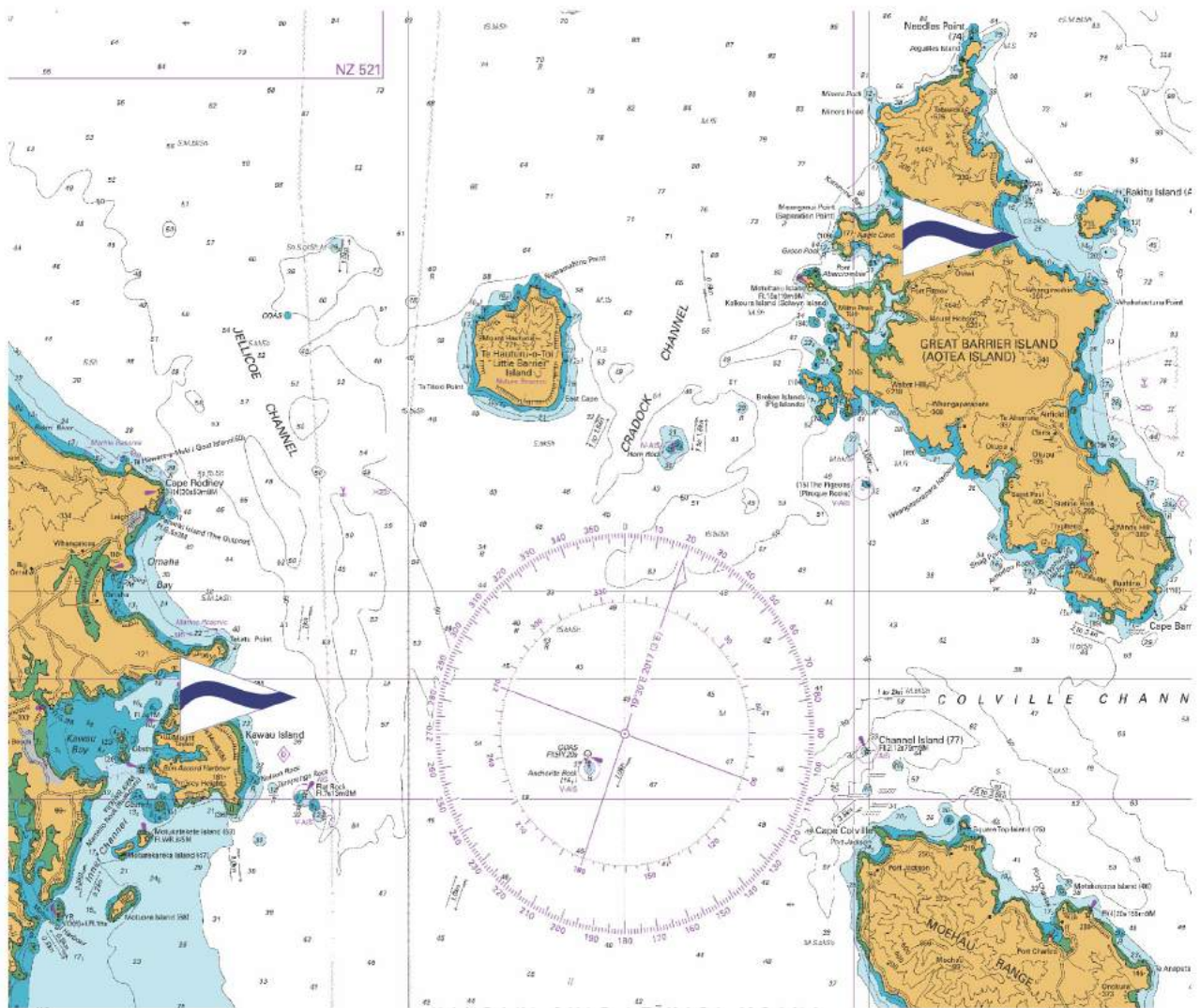
Great Barrier Island (G.B.I.) should be an easterly beam reach of about 28 miles, a long daysail. For those choosing to go around the northwest side of Kawau, be aware of Maori Rock (off Bluebell Point on the Tawharanui Peninsula) while departing via the North Channel. It eats boats!

Port Fitzroy will be our destination, and has a number of sheltered anchorages nearby. If you choose to enter thru Man O' War Passage, beware of Paget Rock which is awash at low tide. Great Barrier Island, and its many coves, is a cruiser's smorgasbord. One such destination is Smokehouse Bay with decent holding in southwest to northwest winds. With a bottom of sand-over-rock, however, holding can be patchy. So be mindful of wind direction and velocity, particularly with north and east breezes. Going ashore should be rewarding – there's a fresh water stream, old bath house, fire pit, picnic tables, swings, etc. Take some food and grog with you, enjoy the ambiance.



SMOKEHOUSE BAY

Kawau Island to Great Barrier Island



Wednesday, 21 March – 1730 HOURS

COCKTAIL RECEPTION

PORT FITZROY BOAT CLUB

Aotea Road, Port Fitzroy, Great Barrier Island 0991

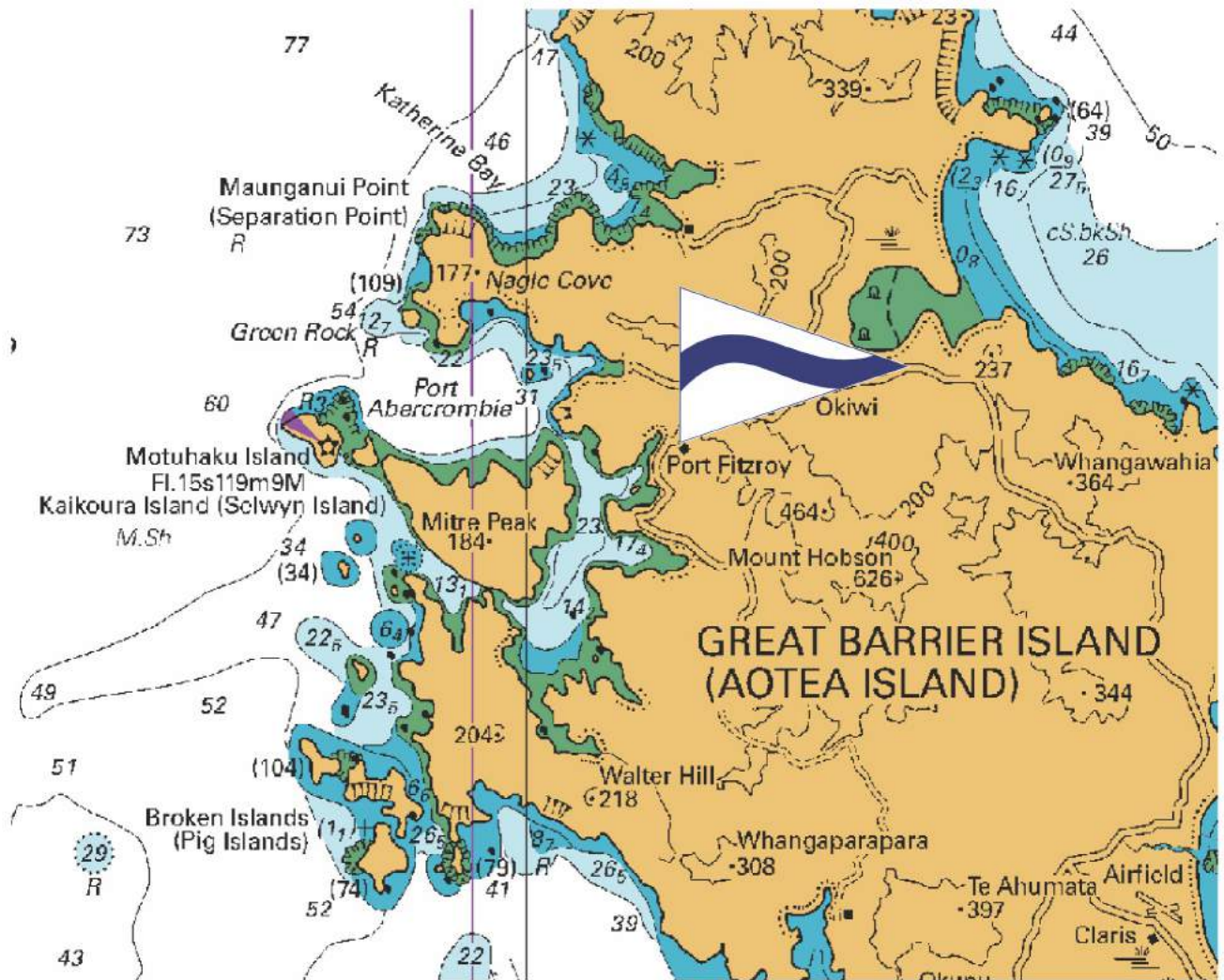
Tel: +64.9.429.0072 no website

On Wednesday, 21 March, plans call for a GAM at The Port Fitzroy Boat Club commencing at 1730, which should provide ample time for the arrival and departure (around 1500 hours) of the weekly supply barge. Cocktails (two drink tickets per person will be provided, and additional drinks may be purchased by credit card) and heavy hors d'oeuvres will be served. For any who are still hungry, dinner at The Port Fitzroy Boat Club, one of Port Fitzroy's two eateries, is a treat. The other, a makeshift burger bar down by the wharf, is an option.



THE PORT FITZROY BOAT CLUB

Port Fitzroy, Great Barrier Island



Thursday, 22 March - Saturday, 24 March

SAIL TOWARD THE COROMANDEL PENINSULA

This leg of the Cruise is the longest at around 36+ miles, so an overnight stop along the way at one of Great Barrier's more southerly anchorages - Whangaparapara Bay, Blind Bay, or Tryphena Harbour are suggested – may be desirable.

Upon departure from Port Fitzroy on a generally southerly course, the passage inside the Broken Islands, if chosen, provides interesting and safe access to the southwest coast of Great Barrier Island and the harbours noted above and below.

Whangaparapara Bay has good shelter in all winds, and is a good starting place for a hike on the island. A one-hour trek to the hot springs will reward the hiker with a very warm bath. The two coves near the mouth of the bay on the south side are also good in settled weather.

Blind Bay is open to the southwest, but is suitable for temporary anchorage in settled conditions in any of the coves around the bay.

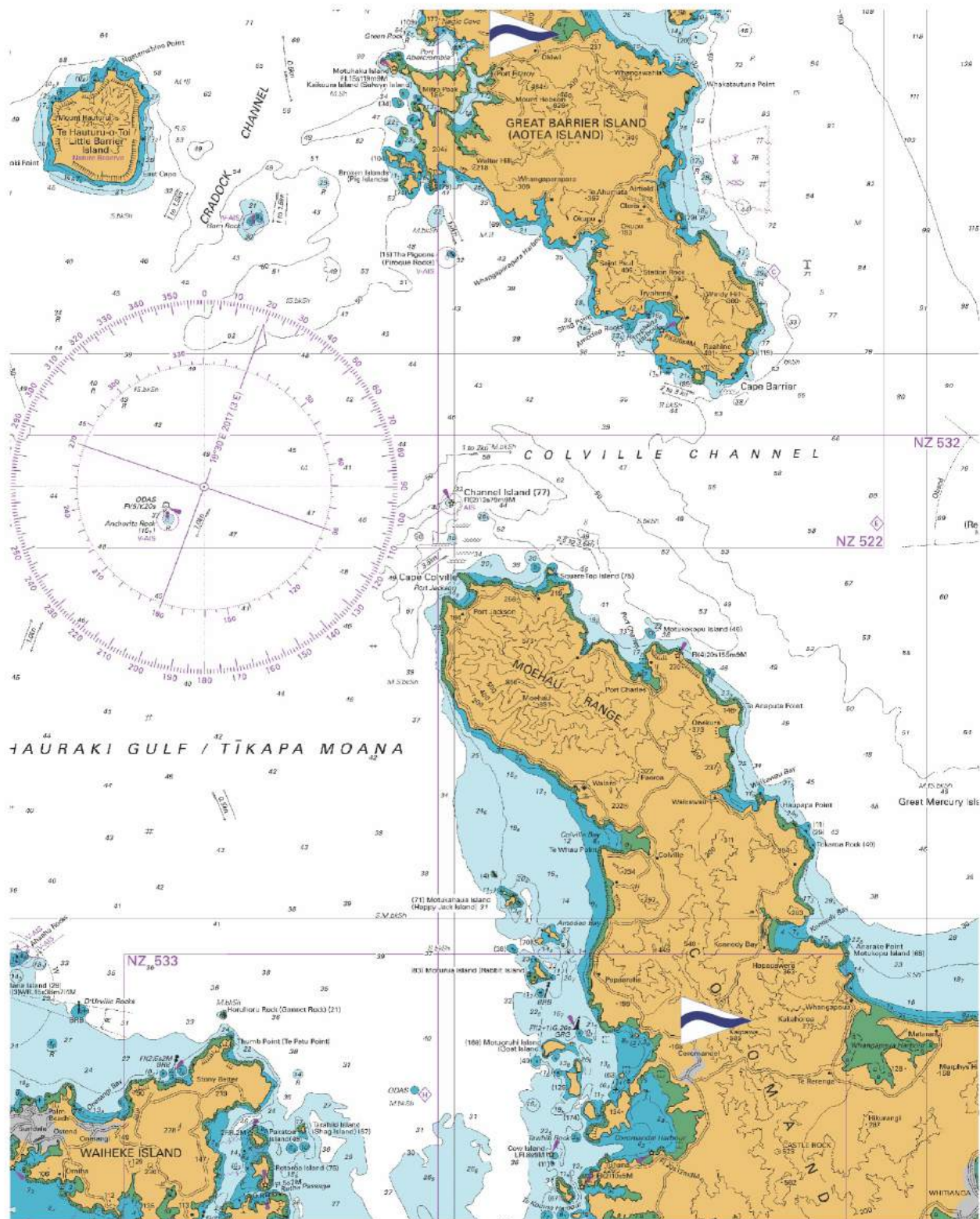
Tryphena Harbour has good shelter from the southwest inside the southern point at Shoal Bay. The north side of the bay has good holding on sand when contending with north and west breezes.

Then, continue south toward the west Coromandel Peninsula and our next scheduled landfall, Coromandel Township. Leave Cape Colville to port while proceeding downcoast toward Te Kouma Harbour – among the Gulf's most delightful anchorages according to Past Commodore Peter Taylor of the RNZYS. En route, and on approach, the Cow and Calf Islands may be to port, Rangipukea Island to starboard, and Te Kouma Head to port. Two "gotchas" in the harbor are a drying rock 137 metres off the west point of the third cove on the northern side, and a rock with 1 metre over it in the harbour center.



TE KOUMA HARBOUR ENTRANCE
(CREDIT RAEWYN PEARL)

Great Barrier Island to Coromandel



Saturday, 24 March – 1230 HOURS

LUNCH

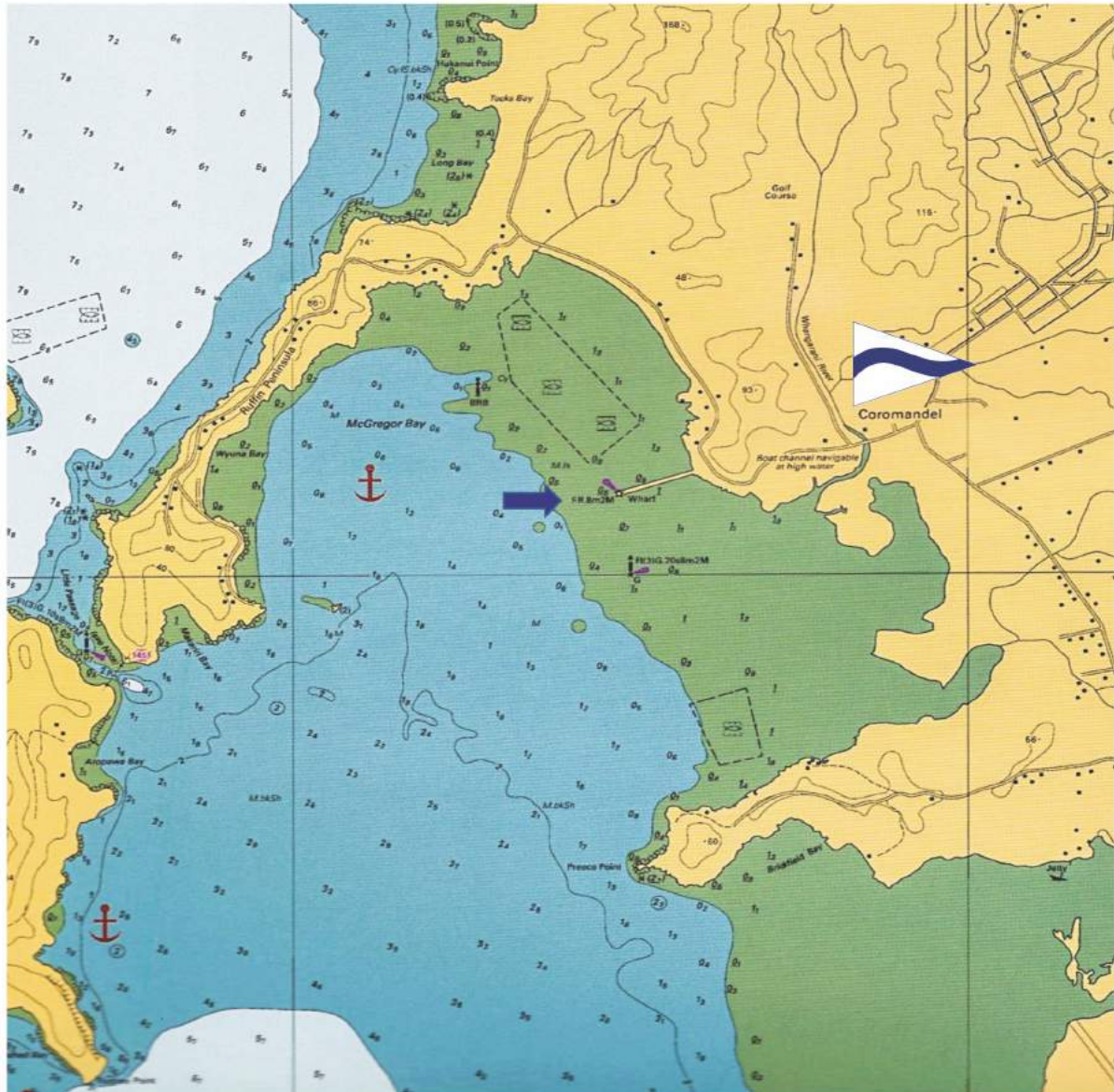
PEPPER TREE RESTAURANT & BAR

31 Kapanga Road, Coromandel Township, Coromandel 3506
Tel: +64.7.866.8211 peppertreerestaurant.co.nz

On Saturday, we expect to day-anchor in Coromandel Harbour's McGregor Bay near the wharf, but in sufficient water, after which we'll proceed by dinghy to the Pepper Tree Restaurant in Coromandel township for lunch by navigating up the boat channel (south of the wharf) to the town landing. Plans call for us to dine at 1230 Hours. Timing is somewhat critical since we'll arrive and depart on either side of high tide. Afterward, plan to return to your anchored vessel "on the tide" while the channel is still navigable. Sailing attire is appropriate, and two drink tickets pp will be provided in your Cruise packet. Additional drinks may be purchased by credit card.



Coromandel Township, Coromandel Peninsula



Sunday, 25 March – Monday, 26 March

PROCEED TO MAN O'WAR BAY ON WAIHEKE ISLAND

The short (reaching?) leg from Te Kouma to Man O'War Bay on the east side of Waiheke Island is about 12 miles. For those seeking a stop en route, consider North Harbour (aka Chamberlains Bay) on Ponui Island, or Southwest Bay on Rotoroa Island, previously closed, but now housing a very interesting museum recalling past days of the island as an alcoholic and drug rehab facility. A note of caution: There is a marked reef to the southwest of this bay. Be mindful of the Cardinal Marks. If opting for a northwest Rotoroa anchorage, beware the submarine cables.

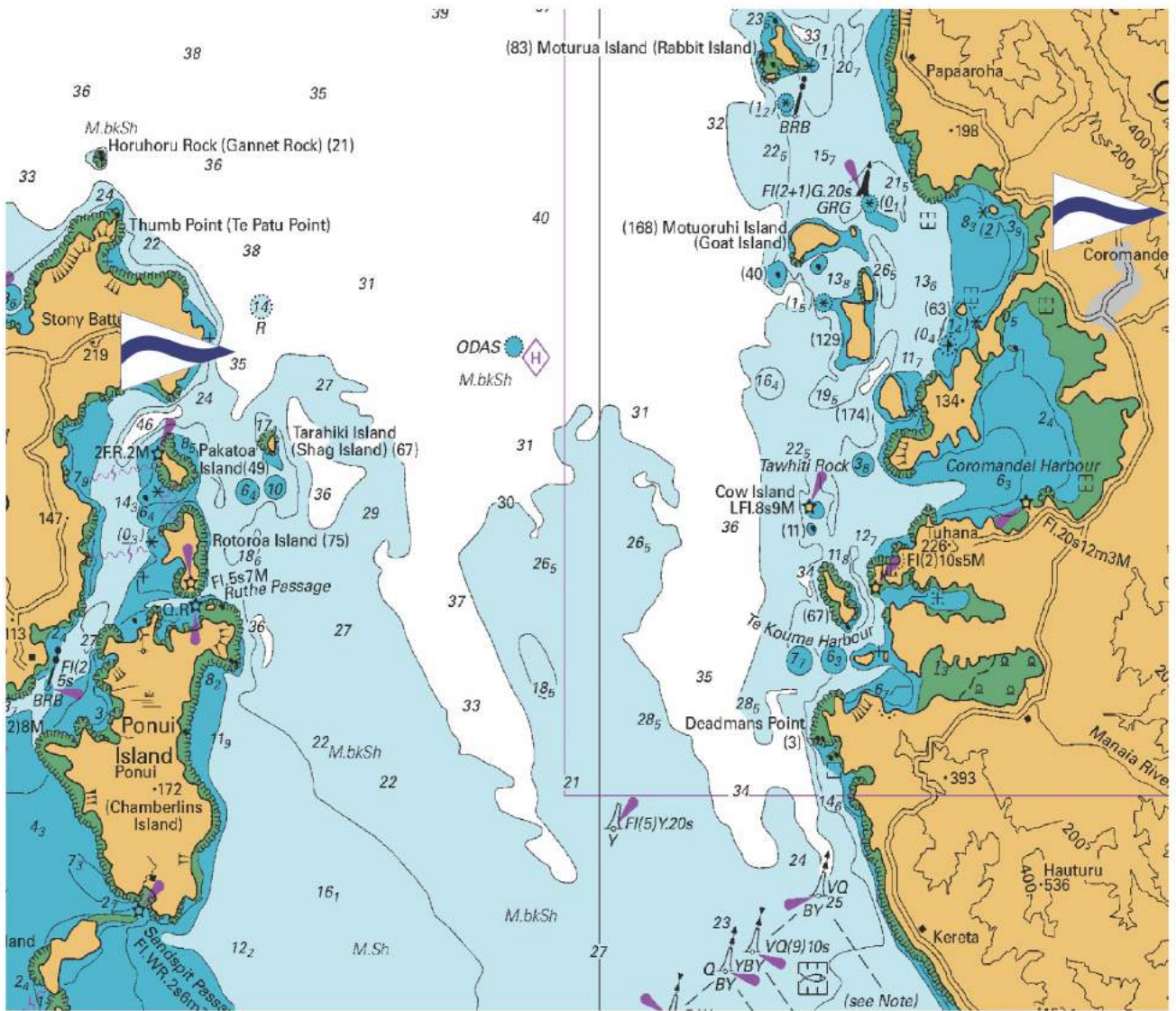


ROTOROA ISLAND



RARE TAKAHE ON ROTOROA ISLAND

Coromandel to Waiheke Island



Monday, 26 March - 1500 HOURS
ACTIVITIES

Monday, 26 March - 1730 HOURS
COCKTAILS, DINNER, CLOSING CEREMONY

MAN O'WAR VINEYARDS

725 Man O'War Bay Road, Waiheke Island
Tel: +64.9.372.9678 manowarvineyards.co.nz

On Monday, we will come together for a final GAM in Waiheke Island's Man O'War Bay at the Man O'War Vineyard's beachfront Event Center. The holding ground and shelter in this bay are excellent, and it is a short dinghy ride to the beach. Activities should start about 1400 with remote control model sailboat races, some time for fellowship with new friends and old, then followed around 1730 by cocktails, dinner, and suitable awards for a deserving few. Yachting attire is suggested for cocktails and dinner. Of course, your Cruise packet will contain the requisite 2 drink tickets per person, and additional libations may be purchased by credit card.



MAN O'WAR VINEYARDS

Man O'War Bay, Waiheke Island



Tuesday, 27 March

CRUISE DISBANDS

The Southern California Station of The Cruising Club of America is honored to have been awarded this hosting opportunity. We trust this adventure has been memorable, and wish everyone a safe journey home. Fair winds and following seas!



SUNSET OVER WAITEMATA HARBOUR, AUCKLAND

HAURAKI GULF CRUISE

3/7/2018

Participants By Name

<u>Last Name</u>	<u>First Name</u>	<u>Boat</u>	<u>Station</u>	<u>Group</u>	<u>Email</u>
Adkins	Doug	Tough Life	PNW	Utlely	d2a@capstanpartners.com
Adkins	Susan	Tough Life	PNW	Utlely	
Bacich	Mick	Tawaki	SOC	Bacich	breasy@aol.com
Bacich	Pam	Tawaki	SOC	Bacich	
Barnard	Steve	Tawaki	SOC	Bacich	barnard.co@sbcglobal.net
Barnard	Barbara	Tawaki	SOC	Bacich	barnard.barbara@sbcglobal.net
Barsz	Bill	Ika Moana II	SOC	White	billbarsz@yahoo.com
Barsz	Jeri	Ika Moana II	SOC	White	jbarsz1@san.rr.com
Beach	Murray	Catherine	BOS	Beach	mbeach@businesscgllc.com
Beek	Seymour	Tangaroa	SOC	Schock	sbeek@earthlink.net
Bohlen	W. Frank	Boheme	ESS	Bohlen	Bohlen@uconn.edu
Bohlen	Elisabeth	Boheme	ESS	Bohlen	elisbohlen@hotmail.com
Bouzaid	Chris	Wai Aniwah		Kasnet	chrisbouzaid@gmail.com
Breimhurst	Dave	Cruczar		Rollow	tucanadad@yahoo.com
Brown	Thacher	Concerto	CHE	Brown	thacherbrown@gmail.com
Brown	Lloyd	Concerto	CHE	Brown	lloydhbrown@gmail.com
Brown	Marian	Cruczar		Rollow	martb@atlanticbb.net
Brown	David	True North	BOS	Templin	dcbrown40808@gmail.com
Bruce	Douglas	Sunstone	BOS	Jackson	doug@dougdaleb.com
Bruce	Dale	Sunstone	BOS	Jackson	dlkb95@gmail.com
Bushueff	Paul	2Xs	BOS	Macleod	merwind-pb@comcast.net
Casserley	Charlene	Rewa		Rowley	mauicass@aol.com
Chandler	Peter	Origin To	BOS	Chandler	lordgeorgevv34@gmail.com
Chandler	Liza	Origin To	BOS	Chandler	liza.b.chandler@gmail.com
Chandler	Emily	Origin To		Chandler	echandler12@gmail.com
Chandler	Crary	Origin To		Chandler	crarychandler@gmail.com
Cockrem	Sue	Shandon		Mitchell	
Coggan	Jim	Auspice	SAF	Coggan	jamescoggan41@gmail.com
Coggan	Kim	Auspice	SAF	Coggan	
Colt	Sloan	Rewa		Rowley	sscolt2@gmail.com
Colt	Sandy	Rewa		Rowley	mfcolt@gmail.com
Connor	Paul	Pure Escape	ESS	Connor	Pacnoank12@gmail.com
Connor	Carol	Pure Escape	ESS	Connor	carolnoank@outlook.com
Cook	Bill	2Xs	BOS	Macleod	cookyacht@cs.com
Cook	Chuck	Bella Rosa	SOC	Morgan	tocecook@earthlink.net
Cook	Pam	Bella Rosa	SOC	Morgan	topacook@earthlink.net
Crane	Les	Savarna	BDA	Crane	lcrane@ibl.bm
Crane	Mags	Savarna	BDA	Crane	margaretc Crane@ibl.bm
Crossland	Kathryn	Good Life	PNW	Smith	Jws514kdc@aol.com
Cullum	Ray	Notorious	BOS	Cullum	raycullum1@gmail.com
Cullum	Wendy	Notorious		Cullum	wendy@michelcullum.com
Daniel	Bobbie	Tangaroa	SOC	Schock	kkbdaniel@sbcglobal.net
Downey	Brad	Cool Change	PNW	Palette	RDowney21@aol.com
Downey	Rosie	Cool Change	PNW	Palette	RDowney21@aol.com
Eberle	Benjamin	Origin To		Chandler	Bqeberle@gmail.com
Eberle	Jeffrey	Origin To	BOS	Chandler	Jeff.eberle@tertiaryinc.com
Eberle	Marguerite	Origin To	BOS	Chandler	Sailor@tiac.net

HAURAKI GULF CRUISE

3/7/2018

Participants By Name

<u>Last Name</u>	<u>First Name</u>	<u>Boat</u>	<u>Station</u>	<u>Group</u>	<u>Email</u>
Embree	Dianne	Escape Artist	ESS	Lhamon	embrees@att.net
Embree	Jeb	Escape Artist	ESS	Lhamon	embrees@att.net
English	Arthur	Sirocco	GLS	English	arthurenglish@sympatico.ca
English	Barbara	Sirocco	GLS	English	arthurenglish@sympatico.ca
Ford	Brin	Boheme	ESS	Bohlen	brinford@gmail.com
Ford	Joy	Boheme	ESS	Bohlen	joywford@gmail.com
Franks	Liz	True North		Templin	lizatlast@gmail.com
Garnier	Al	Bella Rosa	SOC	Morgan	agarnier@reinrag.net
Garnier	JoLinda	Bella Rosa	SOC	Morgan	jl@reinrag.net
Gibbons-Neff	Debbie	Queen Prisca	CHE	McBee	Gibbonsneff@gmail.com
Gloege	Terry	Tawaki	SOC	Bacich	tgloege9@gmail.com
Gloege	Joann	Tawaki	SOC	Bacich	joanngloege@gmail.com
Goodall	Keith	Savarna		Crane	Keith.Goodall@ecoviskga.co.nz
Goodall	Pam	Savarna		Crane	
Hord	Bill	Queen Prisca	CHE	McBee	wthord@aol.com
Hord	Lillie	Queen Prisca	CHE	McBee	lillieh@me.com
Irvin	Dave	Rewa		Rowley	dirvin@woodsroad.com
Jackson	Tom	Sunstone	GLS	Jackson	tomandvicky@sunstonesailing.com
Jackson	Vicky	Sunstone	GLS	Jackson	tv.sunstone@gmail.com
Johnson	Nan	Notorious		Cullum	nan.johnson@comcast.net
Jones	Andy	Sirocco	GLS	English	andyjones1955@gmail.com
Kasnet	Stephen	Wai Aniwah	BOS	Kasnet	skasnet@calypsomanagement.com
Kasnet	Missy	Wai Aniwah		Kasnet	missykasnet@mac.com
Kellogg	Rusty	Concerto	BOS	Brown	mwkellogg@aol.com
Kellogg	Betsy	Concerto	BOS	Brown	etkellogg@gmail.com
Laing	Lisa	Ika Moana II	SOC	White	erlaing@gmail.com
Langston	Lydia	Wai Aniwah		Kasnet	lydialangston@me.com
Lansing	Robert	Concerto	GLS	Brown	rlansing@westminsterfunds.com
Lansing	Kitty	Concerto	GLS	Brown	kshlb4@gmail.com
Lhamon	Tad	Escape Artist	PNW	Lhamon	lyricsails@aol.com
Lhamon	Joyce	Escape Artist	PNW	Lhamon	joylha@aol.com
Logan	Don	Cool Change		Palette	info@sailcoolchange.co.nz
Logan	Marilyn	Cool Change		Palette	info@sailcoolchange.co.nz
Macleod	Robert	2Xs	BOS	Macleod	rwmacleod@verizon.net
Mauer	Jane	True North		Templin	jmauer@tartaninv.com
McBee	Mike	Queen Prisca	ESS	McBee	mikehmcbee@gmail.com
McBee	Carol	Queen Prisca	ESS	McBee	chmcbee@msn.com
McCurdy	Sheila	True North	BOS	Templin	sheilamccurdy@mac.com
McKelvy	Nancy	2Xs	BOS	Macleod	mckelvy@comcast.net
Medland	Sally	Escape Artist	GLS	Lhamon	sally.medland@gmail.com
Medland	Bob	Escape Artist	GLS	Lhamon	medland@sympatico.ca
Minard	Alan	Notorious		Cullum	minard@comcast.net
Mitchell	David	Shandon		Mitchell	
Morgan	Jim	Bella Rosa	SOC	Morgan	jim.morgan@marisolve.com
Morgan	Jill	Bella Rosa	SOC	Morgan	jill.morgan@marisolve.com
Orem	Nick	Audacious	BOS	Orem	nickorem@gmail.com
Orem	Phyllis	Audacious	BOS	Orem	peorem@gmail.com
Palette	Pete	Cool Change	SOC	Palette	ppalette@aol.com

HAURAKI GULF CRUISE

3/7/2018

Participants By Name

<u>Last Name</u>	<u>First Name</u>	<u>Boat</u>	<u>Station</u>	<u>Group</u>	<u>Email</u>
Palette	Harriet	Cool Change	SOC	Palette	hlppcp@sbcglobal.net
Palocz	Patricia	Catherine	BOS	Beach	ppalocz@businesscgllc.com
Robins	Sara	Cruczar		Rollow	robins200@comcast.net
Robinson	John	Tough Life	PNW	Utle	jfrbluemoon@gmail.com
Robinson	K	Tough Life	PNW	Utle	krobinson411@comcast.net
Rollow	Doug	Cruczar	CHE	Rollow	dougrowlow@gmail.com
Rowley	Michael F	Rewa		Rowley	rowleymaui@aol.com
Rowley	Tyson	Rewa		Rowley	tysmaui@gamail.com
Rowley	Charlene "Kiana"	Rewa		Rowley	Charlenekiana@gmail.com
Schock	Tom	Tangaroa	SOC	Schock	tom.schock@att.net
Schock	Jane	Tangaroa	SOC	Schock	jane.schock@att.net
Sloan	Doug	Arcturus		Vrolyk	d.sloan@puretecbio.com
Sloan	Patty	Arcturus		Vrolyk	d.sloan@puretecbio.com
Smith	John Walter	Good Life	PNW	Smith	Jws514kdc@aol.com
Somers	Larry	Ika Moana II	SOC	White	losomers@gmail.com
Stokes	Lisa	Queen Prisca		McBee	lisabstokes@gmail.com
Templin	Gaynelle	True North	SAF	Templin	Gaynellet@hotmail.com
Thompson	Danielle	Origin To		Chandler	Daniellewhy@hotmail.com
Tomsett Jones	Jo	Sirocco	GLS	English	jotomsett@gmail.com
Townsend	Charles	Pure Escape	ESS	Connor	chtnewport@gmail.com
Townsend	Jill	Pure Escape	ESS	Connor	
Utle	David	Tough Life	PNW	Utle	utleydc@yahoo.com
Utle	Mary	Tough Life	PNW	Utle	mary@maryutley.com
Van Sciver	Rod	Audacious		Orem	rodvansciver@comcast.net
Van Sciver	Nancy	Audacious		Orem	nancyvansciver@comcast.net
Vrolyk	Beau	Arcturus	SAF	Vrolyk	beau.vrolyk@mac.com
Vrolyk	Stacey	Arcturus	SAF	Vrolyk	Stacey.vrolyk@me.com
Wakemen	Sam	Wai Aniwah		Kasnet	samwakeman@aol.com
Wakemen	Linda	Wai Aniwah		Kasnet	lwakester@aol.com
Weare	Nick	Savarna	BDA	Crane	nweare@ibl.bm
Weare	Susan	Savarna	BDA	Crane	
White	Tod	Ika Moana II	SOC	White	todwhite@roadrunner.com
White	Linda	Ika Moana II	SOC	White	Lindawhite@roadrunner.com
Willauer	W. Bradford	Escape Artist	BOS	Lhamon	bwillauer@gmail.com
Willauer	Ann P.	Escape Artist	BOS	Lhamon	annwillauer@gmail.com
Woolcott	John	Notorious		Cullum	johnwoolcott@comcast.net
Woolcott	Travis	Notorious		Cullum	traviswoolcott@comcast.net

HAURAKI GULF CRUISE

3/7/2018

Participants By Group

<u>Group</u>	<u>Name</u>	<u>Boat Name</u>	<u>Station</u>	<u>Email</u>
Bacich	Mick Bacich	Tawaki	SOC	breasy@aol.com
Bacich	Pam Bacich	Tawaki	SOC	
Bacich	Steve Barnard	Tawaki	SOC	barnard.co@sbcglobal.net
Bacich	Barbara Barnard	Tawaki	SOC	barnard.barbara@sbcglobal.net
Bacich	Terry Gloege	Tawaki	SOC	tgloege9@gmail.com
Bacich	Joann Gloege	Tawaki	SOC	joanngloege@gmail.com
Beach	Murray Beach	Catherine	BOS	mbeach@businesscglc.com
Beach	Patricia Palocz	Catherine	BOS	ppalocz@businesscglc.com
Bohlen	W. Frank Bohlen	Boheme	ESS	Bohlen@uconn.edu
Bohlen	Elisabeth Bohlen	Boheme	ESS	elisbohlen@hotmail.com
Bohlen	Brin Ford	Boheme	ESS	brinford@gmail.com
Bohlen	Joy Ford	Boheme	ESS	joywford@gmail.com
Brown	Thacher Brown	Concerto	CHE	thacherbrown@gmail.com
Brown	Lloyd Brown	Concerto	CHE	lloydhbrown@gmail.com
Brown	Rusty Kellogg	Concerto	BOS	mwkellogg@aol.com
Brown	Betsy Kellogg	Concerto	BOS	etkellogg@gmail.com
Brown	Robert Lansing	Concerto	GLS	rlansing@westminsterfunds.com
Brown	Kitty Lansing	Concerto	GLS	kshlb4@gmail.com
Chandler	Peter Chandler	Origin To	BOS	lordgeorgev34@gmail.com
Chandler	Liza Chandler	Origin To	BOS	liza.b.chandler@gmail.com
Chandler	Benjamin Eberle	Origin To		Bqeberle@gmail.com
Chandler	Jeffrey Eberle	Origin To	BOS	Jeff.eberle@tertiaryinc.com
Chandler	Marguerite Eberle	Origin To	BOS	Sailor@tiac.net
Chandler	Danielle Thompson	Origin To		Daniellewhy@hotmail.com
Chandler	Emily Chandler	Origin To		echandler12@gmail.com
Chandler	Crary Chandler	Origin To		crarychandler@gmail.com
Coggan	Jim Coggan	Auspice	SAF	jamescoggan41@gmail.com
Coggan	Kim Coggan	Auspice	SAF	
Connor	Paul Connor	Pure Escape	ESS	Pacnoank12@gmail.com
Connor	Carol Connor	Pure Escape	ESS	carolnoank@outlook.com
Connor	Charles Townsend	Pure Escape		chtnewport@gmail.com
Connor	Jill Townsend	Pure Escape		
Crane	Les Crane	Savarna	BDA	lcrane@ibl.bm
Crane	Mags Crane	Savarna	BDA	margaretc Crane@ibl.bm
Crane	Nick Weare	Savarna	BDA	nweare@ibl.bm
Crane	Susan Weare	Savarna	BDA	

HAURAKI GULF CRUISE

3/7/2018

Participants By Group

Crane	Keith Goodall	Savarna		Keith.Goodall@ecoviskga.co.nz
Crane	Pam Goodall	Savarna		
Cullum	Ray Cullum	Notorious	BOS	raycullum1@gmail.com
Cullum	Wendy Cullum	Notorious	BOS	
Cullum	John Woolcott	Notorious		
Cullum	Travis Woolcott	Notorious		
Cullum	Alan Minard	Notorious		
Cullum	Nan Johnson	Notorious		
English	Arthur English	Sirocco	GLS	arthurenglish@sympatico.ca
English	Barbara English	Sirocco	GLS	arthurenglish@sympatico.ca
English	Andy Jones	Sirocco	GLS	andyjones1955@gmail.com
English	Jo Tomsett Jones	Sirocco	GLS	jotomsett@gmail.com
Jackson	Tom Jackson	Sunstone	GLS	tomandvicky@sunstonesailing.com
Jackson	Vicky Jackson	Sunstone	GLS	tv.sunstone@gmail.com
Jackson	Doug Bruce	Sunstone	BOS	doug@dougdaleb.com
Jackson	Dale Bruce	Sunstone	BOS	dlkb95@gmail.com
Kasnet	Stephen Kasnet	Wai Aniwah	BOS	skasnet@calypsomanagement.com
Kasnet	Missy Kasnet	Wai Aniwah	BOS	missykasnet@mac.com
Kasnet	Chris Bouzaid	Wai Aniwah		chrisbouzaid@gmail.com
Kasnet	Lydia Langston	Wai Aniwah		lydialangston@me.com
Kasnet	Sam Wakemen	Wai Aniwah		samwakeman@aol.com
Kasnet	Linda Wakemen	Wai Aniwah		lwakester@aol.com
Lhamon	Tad Lhamon	Escape Artist	PNW	lyricsails@aol.com
Lhamon	Joyce Lhamon	Escape Artist	PNW	joylha@aol.com
Lhamon	Dianne Embree	Escape Artist	ESS	embrees@att.net
Lhamon	Jeb Embree	Escape Artist	ESS	embrees@att.net
Lhamon	Bob Medland	Escape Artist	GLS	medland@sympatico.ca
Lhamon	Sally Medland	Escape Artist	GLS	sally.medland@gmail.com
Lhamon	W. Bradford Willauer	Escape Artist	BOS	bwillauer@gmail.com
Lhamon	Ann P. Willauer	Escape Artist	BOS	annwillauer@gmail.com
Macleod	Robert Macleod	2Xs	BOS	rwmacleod@verizon.net
Macleod	Bill Cook	2Xs	BOS	cookyacht@cs.com
Macleod	Nancy McKelvy	2Xs	BOS	mckelvy@comcast.net
Macleod	Paul Busheuff	2Xs	BOS	merwind-pb@comcast.net
McBee	Mike McBee	Queen Prisca	ESS	mikehmcbee@gmail.com
McBee	Carol McBee	Queen Prisca	ESS	chmcbee@msn.com
McBee	Bill Hord	Queen Prisca	CHE	wthord@aol.com
McBee	Lillie Hord	Queen Prisca	CHE	lillieh@me.com

HAURAKI GULF CRUISE

3/7/2018

Participants By Group

McBee	Debbie Gibbons-Neff	Queen Prisca	CHE	Gibbonsneff@gmail.com
McBee	Lisa Stokes	Queen Prisca		lisabstokes@gmail.com
Mitchell	David Mitchell	Shandon		
Mitchell	Sue Cockrem	Shandon		
Morgan	Jim Morgan	Bella Rosa	SOC	jim.morgan@marisolve.com
Morgan	Jill Morgan	Bella Rosa	SOC	jill.morgan@marisolve.com
Morgan	Al Garnier	Bella Rosa	SOC	agarnier@reinrag.net
Morgan	JoLinda Garnier	Bella Rosa	SOC	jl@reinrag.net
Morgan	Chuck Cook	Bella Rosa	SOC	tocecook@earthlink.net
Morgan	Pam Cook	Bella Rosa	SOC	topacook@earthlink.net
Orem	Nick Orem	Audacious	BOS	nickorem@gmail.com
Orem	Phyllis Orem	Audacious	BOS	peorem@gmail.com
Orem	Rod Van Sciver	Audacious		rodvansciver@comcast.net
Orem	Nancy Van Sciver	Audacious		nancyvansciver@comcast.net
Palette	Pete Palette	Cool Change	SOC	ppalette@aol.com
Palette	Harriet Palette	Cool Change	SOC	hlppcp@sbcglobal.net
Palette	Brad Downey	Cool Change	PNW	RDowney21@aol.com
Palette	Rosie Downey	Cool Change	PNW	RDowney21@aol.com
Palette	Don Logan	Cool Change		info@sailcoolchange.co.nz
Palette	Marilyn Logan	Cool Change		info@sailcoolchange.co.nz
Rollow	Doug Rollow	Cruczar	CHE	dougrollow@gmail.com
Rollow	Marian Brown	Cruczar		martb@atlanticbb.net
Rollow	Dave Breimhurst	Cruczar		tucanadad@yahoo.com
Rollow	Sara Robins	Cruczar		robins200@comcast.net
Rowley	Michael F Rowley	Rewa	SAF	rowleymaui@aol.com
Rowley	Charlene Casserley	Rewa	SAF	mauicass@aol.com
Rowley	Sloan Colt	Rewa		sscolt2@gmail.com
Rowley	Sandy Colt	Rewa		mfcolt@gmail.com
Rowley	Dave Irvin	Rewa		dirvin@woodsroad.com
Rowley	Tyson Rowley	Rewa		tysmaui@gamil.com
Rowley	Charlene "Kiana" Rowley	Rewa		Charlenekiana@gmail.com
Schock	Tom Schock	Tangaroa	SOC	tom.schock@att.net
Schock	Jane Schock	Tangaroa	SOC	jane.schock@att.net
Schock	Seymour Beek	Tangaroa	SOC	sbeek@earthlink.net
Schock	Bobbie Daniel	Tangaroa	SOC	kkbdaniel@sbcglobal.net
Smith	John Walter Smith	Good Life	PNW	Jws514kdc@aol.com
Smith	Kathryn Crossland	Good Life	PNW	Jws514kdc@aol.com

HAURAKI GULF CRUISE

3/7/2018

Participants By Group

Templin	Gaynelle Templin	True North	SAF	Gaynellet@hotmail.com
Templin	Sheila McCurdy	True North	BOS	sheilamccurdy@mac.com
Templin	David Brown	True North	BOS	dcbrown40808@gmail.com
Templin	Jane Mauer	True North		jmauer@tartaninv.com
Templin	Liz Franks	True North		lizatlast@gmail.com
Utlely	David Utley	Tough Life	PNW	utleydc@yahoo.com
Utlely	Mary Utley	Tough Life	PNW	mary@maryutley.com
Utlely	John Robinson	Tough Life	PNW	jfrbluemoon@gmail.com
Utlely	K Robinson	Tough Life	PNW	krobinson411@comcast.net
Utlely	Doug Adkins	Tough Life	PNW	d2a@capstanpartners.com
Utlely	Susan Adkins	Tough Life	PNW	
Vrolyk	Beau Vrolyk	Arcturus	SAF	beau.vrolyk@mac.com
Vrolyk	Stacey Vrolyk	Arcturus	SAF	Stacey.vrolyk@me.com
Vrolyk	Doug Sloan	Arcturus		d.sloan@puretecbio.com
Vrolyk	Patty Sloan	Arcturus		d.sloan@puretecbio.com
White	Tod White	Ika Moana II	SOC	todwhite@roadrunner.com
White	Linda White	Ika Moana II	SOC	Lindawhite@roadrunner.com
White	Larry Somers	Ika Moana II	SOC	losomers@gmail.com
White	Lisa Laing	Ika Moana II	SOC	erlaing@gmail.com
White	Bill Barsz	Ika Moana II	SOC	billbarsz@yahoo.com
White	Jeri Barsz	Ika Moana II	SOC	jbarsz1@san.rr.com