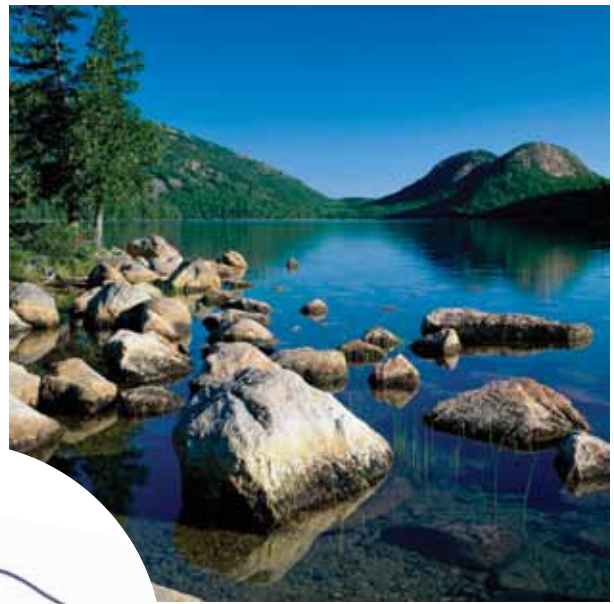


CRUISING CLUB OF AMERICA

# MAINE CRUISE



AUGUST 6 TO 15, 2013

# Events at a Glance

## **Monday, August 5<sup>th</sup> – Maple Juice Cove**

1700 Pre-cruise GMP Gam

## **Tuesday, August 6<sup>th</sup> – Rockland**

0900-1700 Cruise Registration, Trident Marine

1700-2100 Opening Reception – Gazebo above Trident

## **Wednesday, August 7<sup>th</sup> – Rockland – Optional**

0900-1200 Lyman Morse tour – bus departs Town Landing

## **Thursday, August 8<sup>th</sup> – Captain's Choice**

## **Friday, August 9<sup>th</sup> – Castine / Maine Maritime Academy**

1300-1600 Small Boat Racing, MMA

1700 Cocktails at MMA waterfront, Andrews Hall

1800 Lobster dinner at Maine Maritime Student Center

## **Saturday, August 10<sup>th</sup> – Optional in Castine**

0800-0900 Breakfast at MMA Student Center

0900-1500 Tours of *State of Maine* training ship available hourly.

0930 Bridge simulator session one – Bath Iron Works Center

1000-1115 Liferaft training, MMA pool, lower entrance of  
Oakey Logan Alexander Physical Education Center

1100 Simulator session two

1100-1300 Lunch at Student Center

1430 Simulator session three

1430-1545 Liferaft training, MMA pool

1600 Simulator session four

1700 Rum keg and cash bar on waterfront, Andrews Hall

1800 Optional barbecue at waterfront

## **Sunday, August 11<sup>th</sup> – Captain's Choice**

## **Monday, August 12<sup>th</sup> – Southwest Harbor**

1700 Cocktails at Hinckley Dock

1800 Buffet dinner at Hinckley Mainline Building

## **Tuesday, August 13<sup>th</sup> – Optional event**

0900-1200 Tour of Hinckley Trenton Facility – bus departs Hinckley dock

## **Wednesday, August 14<sup>th</sup> – Captain's Choice**

## **Thursday, August 15<sup>th</sup> – Roque Island**

1200 Beach picnic – final event

# Contents

	<u>Page</u>
<b>Cruise Essentials</b>	4
<b>Event Locations</b>	
• Rockland Harbor	10
• Castine Harbor	18
• Southwest Harbor	24
• Roque Island	33
<b>Along the Way/Other Harbors</b>	41
<b>Additional Useful Information</b>	
• Charts, Pilots, Cruising Guides	43
• Medical and Emergency Contacts	46
• Maine Cruise Flag	49
• DSC Tutorial	50
• Transportation Options	53
<b>Participant Lists</b>	
• By Name	54
• By Boat	60



## THE CRUISING CLUB OF AMERICA

DANIEL P. DYER III  
COMMODORE  
64 MAIN STREET  
WICKFORD, RI 02852  
(401) 639-8739  
EMAIL: fastrabbit1@cox.net

Dear CCA Maine Club Cruise Participants,

Cruise co-chairs Garry and Leslie Schneider, the Boston Station, the entire Gulf of Maine Post, and I welcome you to the 2013 Summer Cruise in Maine. Seven of our club cruises since 1982 have been in Maine for very good reasons; beautiful country, islands and anchorages galore, crystal clear weather except when the dew point reaches the ambient, wonderful towns and restaurants when you feel the need, lobsters, clams, mussels, dependable calm mornings refreshed by the afternoon southwesterly.

The Schneiders and their dedicated committee have been defining and organizing our cruise for over two years. They have optimized your experience here to enjoy the CCA camaraderie ashore at four events – the opening reception in Rockland, a gathering at Maine Maritime Academy in Castine, a mid-cruise dinner at Southwest Harbor, and a Final Gam at Roque Island. These events leave plenty of time to explore the coast and islands of Maine. Additionally, there are several options previously publicized and further detailed in this guide that will be of interest to many. I know I'm looking forward to the simulator at the Maine Maritime Academy.

It is fitting that this well organized cruise in a spectacular venue has already attracted over 50 of the prettiest yachts on the east coast. We are all anticipating many days of fog free cruising, friendship and lazy afternoons enjoying the beautiful anchorages and wildlife. If you find Rabbit anchored in a lovely cove, please come over or raft. Mimi and I look forward to seeing all of you.

Sincerely,

MMSI 338080443



THE CRUISING CLUB OF AMERICA  
GULF OF MAINE POST

PETER W. STOOPS  
POST CAPTAIN  
148 FORESIDE ROAD  
FALMOUTH, ME 04105  
207-831-4062 cell  
EMAIL: [stoops@ewatershed.com](mailto:stoops@ewatershed.com)

Dear CCA Maine Cruise Participants,

Owning two sailboats, I've learned that it's hard to use both at once, and over the years I've found that I take great pleasure in having friends and acquaintances use either in my absence. They always come back with an adventure to tell, a new gunkhole found, or simply an appreciation at being able to sail.

So it is with the 2013 CCA Club Cruise in Maine, except that instead of sharing a boat, all of us in the Gulf of Maine Post get to share an entire state with our friends and fellow members, and nothing gives us greater pleasure.

If you are reading this welcome note, it means you are part of the cruise, and you've seen how much work Garry and Leslie Schneider have put into making this a great experience for you. The venues are all vintage coastal Maine, and when you aren't participating in a planned event, you will have the entire coast with all its islands, bays and towns to explore.

The GMP is an active post, and all of its 100 members get to rendezvous with each other fairly often at our monthly events. Nonetheless, we do have this geographical issue of being tucked away in our own northeastern corner of the country, so we don't get to see as many other CCA members "from away" as we'd like! This is our opportunity, then, to show you the coastal cruising grounds that we love so much, and it's a genuine thrill to share it with you.

A special "Thank You" to GMP advisers Jim Harvie and Jim Chambers, GMP financial experts Peter Chandler and Ross Santy, VOYAGES editors extraordinaire Doug and Dale Bruce, and our 2013 Port Captains Steve Tofield, Tom Kiley (Rockland), Peg Brandon, Peter Haddock, Jen Haddock (Castine), Rob Beebe (Southwest Harbor), and Greg Gebow (Roque).

All of the GMP members are standing by to make this cruise a special one for you. Welcome to Maine!

Sincerely,

MMSI 367433480

# Cruise Essentials

*Please note: All information in this Booklet is believed to be correct. However, your Cruise Committee can assume no responsibility or liability for its use. Chartlets are for information only and are not to be used for navigation. In composing this booklet we have used many of the guide books including "A Cruising Guide to the Maine Coast" by Taft & Rindlaub as well as previous CCA cruise books.*

## COMMUNICATIONS

### VHF

Communication by VHF should be adequate everywhere. Members of the cruise committee will monitor 72 VHF every morning from 0800-0830. Cruise announcements, if any, will be broadcast daily at 0815.



For those who might be interested, Ron Trossbach has suggested that we try to enhance our cruise members' communications skill set by learning to utilize the "group calling" or "individual calling" feature of our DSC equipped VHF radios at 0830, following the morning Cruise Announcements. Those who wish to participate will need to provide Ron with their Marine Maritime Service Identifier, or MMSI. Most of us have heard of this rather powerful system but very

few are proficient in its use. Ron has drafted a DSC primer (see Appendix) for those interested in learning this skill. If we can master the fundamentals, we can try some DSC calling between individual boats. Also please note Walt Paul's extensive commentary on communications on the CCA web site.

### CELL PHONES

While cell phone coverage is generally acceptable in the area, please expect that the coverage may be spotty as one travels east. Unfortunately the presence of a cell tower does not necessarily mean that your provider will have an antenna on that tower! We do not understand the vagaries of the cell phone world. As the Coast Guard points out, "If you are in trouble, call on channel sixteen first". If you rely on cell phone coverage to stay in contact with family or business, check the coverage map for your provider. Major carriers in Maine include Verizon, AT&T, US Cellular and Unice, but none of them cover all of the state on all of the towers.

### INTERNET

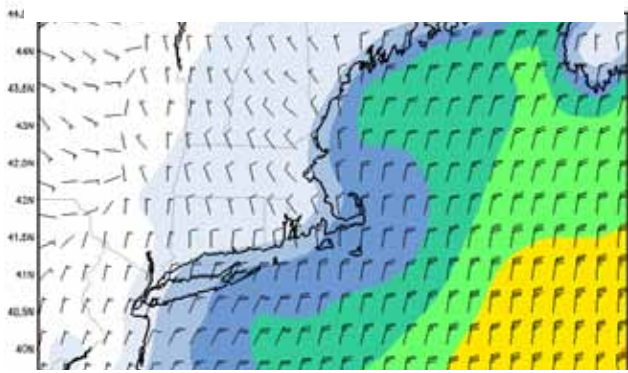
Local libraries frequently have internet access, and increasingly marinas are offering this service, though often for a fee. For those of us able to employ them, amplifying antenna systems will work in many harbors and even along some parts of the near shore.

### WEATHER FORECASTS

NOAA weather broadcasts are available on VHF channel WX2 and WX3. Some may receive Canadian forecasts further east.

For those with internet access, your editors highly recommend looking at [[www.passageweather.com](http://www.passageweather.com)]. We have found it to be most useful and easy to comprehend. The website basically provides the GRIB files but in various shades of color. The predictions seem especially good up to four days out although they give seven days.





## MAINE WEATHER & FOG

To quote from the CCA's 1988 summer cruise notes prepared by Jim Harvie and Peter Willauer: "Maine summer weather is a gamble but one with the odds heavily in your favor...The usual pattern starts with a calm morning, a gentle southwesterly air before noon, sometimes breezing up to 15 knots in the afternoon, and dying out rather suddenly before sunset. Offshore, the breeze is likely to air along all night, usually working somewhat to the westward. After several days of this, the wind may work into the south, bringing warm, damp air from the Bermuda High over the cold coastal water. The air will feel damp; sneakers and socks once wet with salt water will be soggy; you can see your breath in the late afternoon, and the fog will likely shut down before night.

"Fog is not a catastrophe. If the sky is light overhead, it will likely burn off before noon and will scale up to the leeward of large islands and in the thoroughfares. Short runs for loud buoys or bold shores will take you a long way a little at a time. However, if you find it dark overhead, the rigging dripping and the decks wet, a brisk south or southeast breeze packing the stuff in ever thicker and the nearest shore but a ghost of spruce trees, plan to spend the day clamming, visiting with your neighbors, exploring ashore or reading good books. Fog has been known to last for many days on the coast, but this is unusual....

"Occasionally we get a smoky sou'wester, a hazy afternoon, usually in advance of a cold front, when the wind builds up to 20 to 25 knots, stirs up a malevolent chop and holds on into the evening. It will probably end with a shower in the night and a brisk northwester the next day. These are the days we wait for all winter – bright, cool, with every tree on every island brilliant in the sun and with great green puffs rushing offshore. We find a reef in the mainsail comfortable.

"When you must head back to the westward, if you are lucky you will get a dry easterly, a cloudless east or southeast breeze that will blow you clear to Cape Ann, even though it may cloud up and rain before night.

"The tide runs harder as you go east and in general runs east on the flood and west on the ebb in the passages. Bass Harbor Bar is the outstanding exception....Watch the lobster traps for indications of the direction of the current. Guess at its velocity and divide by 2. Most people overestimate it."



The lighthouse at Petit Manan averages 250 hours of fog a month during July and August. The second half of August, however, tends to have less fog than earlier in the month.

## TIDES

The further east one goes towards the Bay of Fundy, the greater the range of tide. Expect tide ranges of 8 to over 13 feet in the cruise area.

## TRASH & PUMP-OUT

Pump-out facilities west of Mount Desert Island have increased in number, and several Maine areas are now no-discharge zones. Plan ahead. The Maine Department of Environmental Protection has a website which includes pump-out station listings with a map, last updated 2010 at: [[www.maine.gov/dep/water/wd/vessel/pumpout/pumpoutguide.pdf](http://www.maine.gov/dep/water/wd/vessel/pumpout/pumpoutguide.pdf)]. Note that several harbors have pump-out boats. Please also consider that many small town landings in Maine may have only a single trash receptacle and are not equipped to handle the waste from a fleet of sailboats. Please be considerate visitors.

## CREW TRAVEL

Major airports in Maine include Portland (PWM) and Bangor (BGR). Cape Air serves Bar Harbor/Trenton in Hancock County (BHB) and serves Rockland in Knox County (RKD). There are regularly scheduled flights from Boston and car rental is available at the airports. Since summer is a busy time in the area, planning ahead helps. A few airlines are cutting their flight schedules into Maine at this time.

## SUPPLIES & REPAIR

Repair parts are generally available in our cruise area, which has a number of boat manufacturers and support facilities. Sailing repair parts may be less available further east, although Downeast ingenuity has served many a sailor well.

Maine is fortunate to have a number of boat yards with CCA affiliations. Running from West to East: (with apologies to anyone left out):

- Phin Sprague, Portland Yacht Services, 207-744-1067
- Brian Harris, Maine Yacht Center, 207-842-9000
- Merle Hallett's son Richard, Hallett Sails, Falmouth 207-781-7070
- Win Fowler, Maine Sailing Partners in Freeport, 207-865-0850
- Blair Pyne, Broad Cove Marina in Bremen, 207-529-5186
- Cabot and Drew Lyman, Lyman & Morse in Thomaston, (Steve Tofield works there as well), 207-354-6904
- Tom Kiley, Rockport Marine, 207-236-9651



- Steve White, Front Street Ship Yard, Belfast, 207-930-3740 and Brooklin Boat Yard, Brooklin, 207-359-2236
- Bob Hinckley, formerly of Hinckley Yachts, SW Harbor, 207-244-5531
- Cuyler Morris, Tom Morris' son continues Morris Yachts at both Northeast Harbor 207-276-6300 and Bass Harbor 207-244-5511
- John Butler, son of Farnham Butler, runs Mount Desert Yacht Yard in Somes Sound 207-276-5114

Other yards worth noting: Billing's Marine in Stonington; Journey's End in Rockland; Wayfarer Marine in Camden; Ocean Pt. Marina and Paul E. Luke Inc. in E. Boothbay; Boothbay Region Boatyard and Southport Island Marine in Southport; Robinhood Marine Center up the Sheepscot in Georgetown and Great Island Boatyard in Harpswell.



## LOCAL KNOWLEDGE

### PERSONAL FLOTATION

Maine laws require that children 13 years of age and under must wear a Type I, II or III PFD while on deck aboard all watercraft. This is also a new USCG requirement, reflecting the large number of incidents of drowning. The current laws and rules for the State of Maine may be found at: [[www.mefishwildlife.com](http://www.mefishwildlife.com)].

All vessels must carry one PFD per person, and this will be enforced for dinghies. Wearing one's inflatable PFD will suffice in the dink, but it must be worn to count. The Maine Marine Patrol mans small craft which operate in harbors doing safety and registration checks. The fines are not insubstantial and are more likely than warnings.

### LOBSTER GEAR

Lobster traps are frequently near navigational aids, which also are frequently near the ledges that create ideal hiding places for crustacea. Increasingly lobstermen are using sinking lines, now required for offshore traps. Often one will see a buoy, colors specific to the owner, and perhaps a smaller float or toggle, which is set closer to the trap. Try not to go between the toggle and the buoy, especially if there is a current running that will keep the line between them taut and near the surface. Watching the gear is a useful indication of the local current direction and intensity. Lobstermen prefer to haul at low tide; so they set their gear in water that is deep enough for them to navigate at the lowest springs. In general, at half tide or better, if you are in among the buoys, you will not run up on a sand bar; however, you might manage to find an isolated rock.

Lobster traps may be set in groups of four or more traps to one float. A lost trap will cost a lobsterman about \$70, and losing a string of six will pretty well dent the week's profit. Efforts to avoid them are encouraged. However, it is also well to be prepared to



remove line from a fouled propeller. A wet suit will be useful in all but protected coves. Sometimes lines can be freed with a good long boathook. Salvage the connection to the trap if at all possible.

There are those who feel that line cutters such as "Spurs" will allow them to traverse areas of lobster gear without fear of lasting entanglement. They are right some of the time and wrong much of the time. The cutters do not always work to clear the line. Others say that cutters should not be used at all as they cause unnecessary losses to the fishermen. Still others say that if the fishermen are going to put their gear in the channels, then it's fair to mount the cutters. This discussion is best continued with a glass of rum as moderator.

### SHELLFISH

The state of Maine allows limited harvesting of shellfish for personal use, but be aware that there are towns which require a recreational license for the digging of clams, mussels, etc. Please also note that red tide warnings are no longer broadcast on the VHF weather channels. For further information on contacting the Department of Marine Resources, see comments under medical emergencies.

### THE CAT FERRY

The high speed ferry, "The Cat," which once connected Yarmouth, Nova Scotia with Bar Harbor and

Portland, Maine was halted a few years ago after its government subsidy was suspended. There has recently been discussion aimed at restoring this service. At this point in time we do not know when or if service will resume, but should you see a high speed vessel on your radar screen, be prepared. In the past the captain has been courteous in issuing security calls and responding to VHF traffic.

## SEA BIRD NESTING SITES

These are closed to visitors by State and Federal laws during the nesting season from spring to late summer. Please respect all nesting seabird sites. These islands are posted with a sign of a bird in flight on a black and purple background and may have more specific dates as well.



## MAINE ISLAND TRAIL ASSOCIATION

MITA works together with the State of Maine and various conservation organizations to promote low impact use of public and private islands. Some of the Maine islands in private hands are open only to MITA members. Within the Cruise area are several islands owned by the Nature Conservancy, a few owned by the State of Maine or Maine Coast Heritage Trust, and others which MITA oversees.



## FLAG ETIQUETTE

Cruise participants are reminded that we will be observing flag etiquette as outlined in the CCA Yearbook at page 454: "Flags shall be flown properly or not at all" (Past Commodore Jim Harvie). Morning colors will be made at 0800, and struck at sundown. Those within range may be guided by cannon fire from Madrigal or Rising Wind.

## CHARTLETS

Along with information about the cruise events in this book, you will find a few chartlets to serve as a guide to locating services and gatherings ashore. No doubt you've read this disclaimer before: These chartlets are not intended to be used for navigation. This year we are featuring the excellent chartlets produced by USHARBORS, [<http://www.usharbors.com>] a new website service of Maine Boats, Homes & Harbors magazine. Their charts are scalable and readable and printable in many different configurations. The website also includes tide and weather forecast data, plus extensive local advice on marine and other related services.



## EVENT TIPS

### REGISTRATION AND NAME TAGS

Cruise booklets and name tags will be available on August 6th at registration to be held at the Trident dock in Rockland from 0900 to 1700, and thereafter at the reception gazebo a short walk inland.

### CRUISE BOOK UPDATES

Any changes to scheduled activities which are not included as inserted updates will be announced via VHF channel 72 during the 0815 broadcast. Please notify Commodore Dyer the previous evening of any announcements desired.

### DRESS

Please plan on appropriate “smart casual” attire at the events. Air temperatures may warm up during the day, but cool off considerably in the evening, on the water and during inclement weather.

### RAFTING

Rafting is encouraged in event harbors to a maximum of three boats, weather permitting. Fenders over the side signal a welcome to incoming CCA boats. There are a number of rental moorings available at Rockland and Southwest Harbor, as well as dock space. There will be a

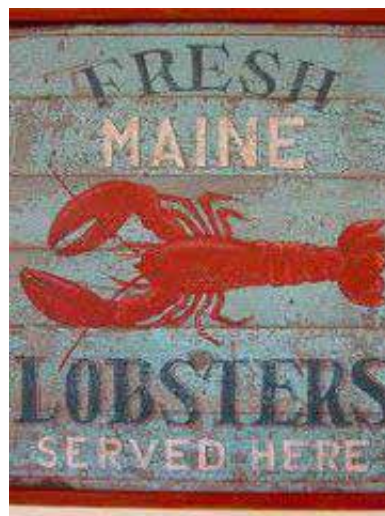
few rental moorings available in Castine, but most of the fleet will need to anchor in Smith Cove. Anchoring will be required at Roque Island. Launch service will be different for each harbor and details will be offered in an addendum sheet.

### YOUNG SAILORS

Children are welcome at all shoreside events during the cruise. Please note the Maine PFD requirements for those 13 and under when on the water.

### PETS

Since our cruise events are held on properties with limited space, we are requesting that owners of pets refrain from bringing their pets to the event gatherings unless they are specifically allowed. We recognize the need for exercise and shoreside time, but hopefully owners will respect this rule during events. The harbors chosen all have ample space to allow for time ashore with a four-legged friend.





# Rockland Harbor

Charts: 13302, 13305, 13307

**August 6, 2013**

Sunrise: 05:30 EDT

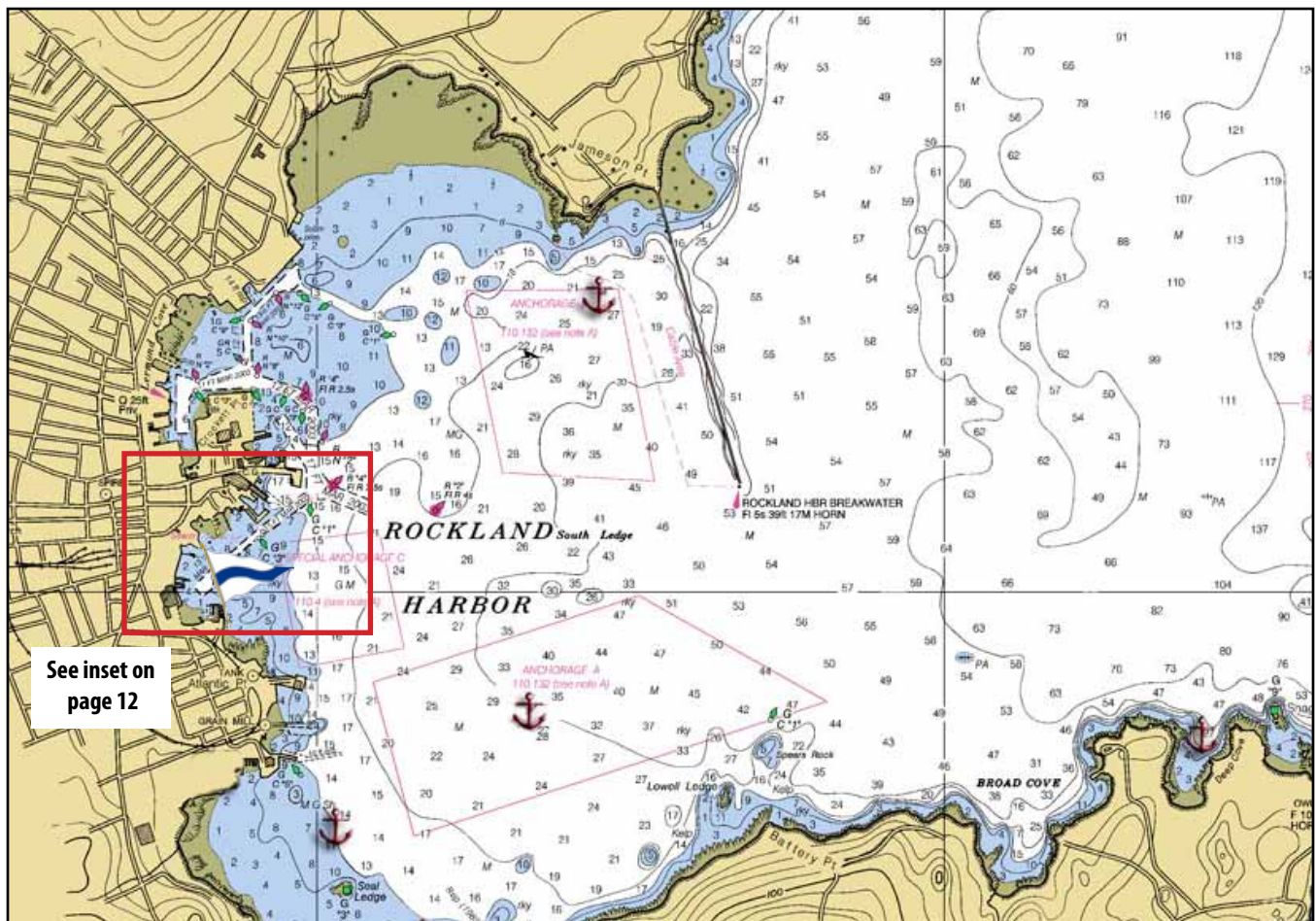
Sunset: 19:56

Tides	Time	Height (ft)
Low	05:23	0.2
High	11:33	9.6
Low	17:32	0.9
High	23:42	10.5



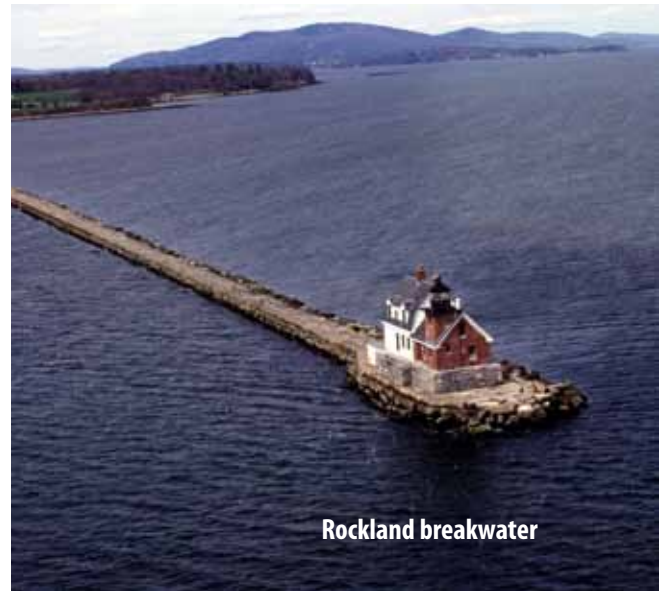
## CHARTS

The new USHarbors.com website [<http://me.usharbors.com/harbor-guide/rockland-harbor>], a service of *Maine Boats, Homes & Harbors* magazine, connects boaters to shoreside information and businesses by providing free, printable nautical charts, tide charts, marine forecasts, weather buoy data, etc.



## ENTERING ROCKLAND HARBOR

Rockland Harbor offers an easy entrance. The breakwater on the northern side includes a distinctive lighthouse at its end. Anchorages are available in numerous locations shown on the chart, and the harbor has several mooring fields. Rockland has ferry service to Vinalhaven and North Haven and a bit of commercial traffic. These ferries should now show on AIS. The marked channel runs toward town, then the mooring fields are divided at a mid-point designated by red buoy "R4" and by the Coast Guard Station. The area to the south includes the anchorage and mooring field nearest Trident Marine and our opening reception.



Rockland breakwater

## Opening Reception – Tuesday, August 6

### REGISTRATION

Come to the dock at Trident Marine [[www.yachtingsolutions.com/tridentyachtbasin](http://www.yachtingsolutions.com/tridentyachtbasin)] for registration from 0900 to 1700. After 1700, please come to the check-in table at the nearby gazebo cocktail reception.

While Trident Marine has limited dock space, dinghies may tie up (for a short period) on the inner dock. The dock and nearby areas offer sweeping views of the harbor. Our opening event will be held at the gazebo near Trident. One can also take a short harbor walk from the public landing to Trident, which has a gated entrance that will be open for this event.



Trident wharf with gazebo at right

Charles Foote is Trident's waterfront director, and advance docking reservations may be made by contacting him at 207-236-8100 or cell: 207-596-0082. His e-mail is [charlie@yachtingsolutions.com](mailto:charlie@yachtingsolutions.com). There is limited docking space for large craft, so book ahead if you wish a slot. A list of other dock and mooring options is shown below.

Bill Morong, Sr. is President of Yachting Solutions., Trident's parent company. Katherine Morong (married to Bill Jr.) will be our hostess and caterer for the evening reception. Katherine's business [[www.cakestoccelebrate.com](http://www.cakestoccelebrate.com)] has many ties to the local communities.

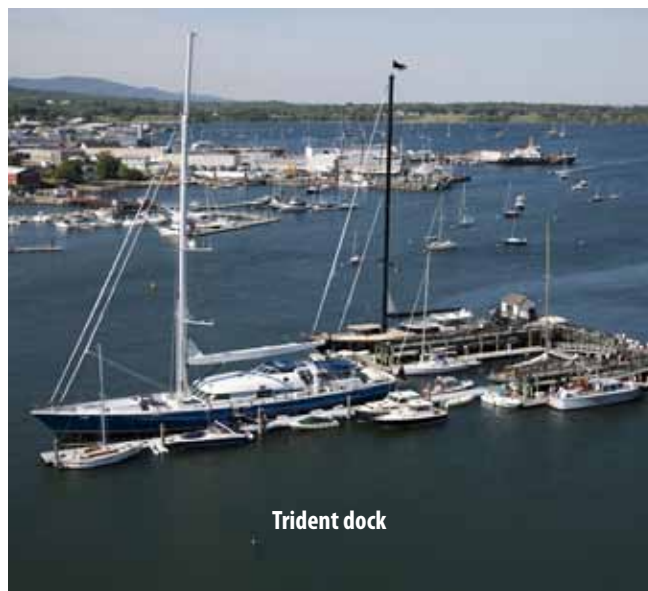




Our reception will commence at 1700 at the gazebo shown on the chart at left, just outside the Trident gate. There will be two bars for the membership, with drink chips included in the registration packets. One chip will buy a beer or a glass of wine; two will buy a mixed drink. Beyond the chips, there will be a cash bar. The Gulf of Maine Post Rum Keg will be available without charge until empty. Passed hors d'oeuvres will be followed by several serving stations featuring an array of meats, fish, greenery, cheeses, breads and spreads. It is our intention that most will not need to make further dinner arrangements.

## DOCKING & MOORING

- **Journey's End Marina** (VHF 9, 18 – 207-594-4444) has facilities both north and south of the Coast Guard station and has rental moorings in addition to dockage. Rates quoted are \$2.25/ft/day for vessels up to 45 ft., and \$3.00 ft/day for vessels of 46-75 ft. Fuel, water, ice, pump out, WiFi, showers and laundry are available, and the facility offers services and a ship's store. Moorings at \$30/day include use of the dinghy dock and showers. This company has a long history of serving vessels in the fishing fleet, and the *Victory Chimes* will be at this dock. Reservations at Journey's End are recommended and should be made well in advance. [[journeysendmarina.com](http://journeysendmarina.com)]
- **Knight Marine** (VHF 9 – 207-594-4068) on the north side of the harbor also offers dockage (\$3/ft/day), moorings (\$30/night), fuel, water, ice, WiFi, a ships chandlery, showers and laundry. They can accommodate vessels to 40 ft. at the dock, and will accept reservations as early as March. During the season the dock phone is 207-596-7216. [[www.knightmarineservice.com](http://www.knightmarineservice.com)]
- **Ocean Pursuits** (207-596-7357) is another full service yard on the north side of the harbor which offers moorings and repair services. [[www.oceanpursuits.com](http://www.oceanpursuits.com)]
- **Rockland Landings Marina** is on the south side of the Coast Guard station and has dock space at \$2.25/foot per day for vessels to 45 ft., with higher rates for larger vessels, and moorings at \$30 night. They have diesel, gas, water, pump out, ice, WiFi, power, showers and laundry, as well as a restaurant (with new ownership) on the premises. Reservations accepted at any time. Contact Kevin Taylor at [stenmgt@mid-coast.com](mailto:stenmgt@mid-coast.com), 207-596-6573 or 207-596-9171 (cell) or VHF 9, 16) [[www.rocklandlandingsmarina.com](http://www.rocklandlandingsmarina.com)]





- **Beggar's Wharf** offers moorings and a dinghy dock, with access to its shore side facilities (showers, clubhouse). Mooring rates are graduated by the size of the vessel and will be \$25 per night for vessels under 40 ft., \$35 for those between 40 and 50, and \$45 for larger vessels. [[www.beggarswharf.com](http://www.beggarswharf.com)] This is a small operation run by Charlie Weidman whose cell phone is the best contact: 207-691-3483. Charlie also runs Charlie's Marine Service, which services the area for Sea Tow and TowBoat US, and can offer diving services if needed.
- **Two Toots** has moorings in the harbor including a number near the Trident facility. It can be reached at 207-594-2891 and charges \$20 per night, but does not accept reservations. Two

Toots also provides launch service - see below.

- **The Public Landing** is south of the Coast Guard station, and dock space may be available on a first come, first served basis. The municipality maintains several rental moorings and the Harbormaster, Ed Glaser, or his assistant, Nathan Dinces, can be reached through 207-594-0312 or VHF 9, and email: [eglaser@ci.rockland.me.us](mailto:eglaser@ci.rockland.me.us). He will hold mail and packages for cruisers. Address mail, UPS or FedEx to the recipient - CCA Cruise, c/o Ed Glaser, Harbormaster, 270 Pleasant St., Rockland, ME 04841. Note that the city does not accept advance reservations in order not to compete with private firms. Tokens for showers at the public landing are \$2, and there is one washer and dryer in the building as well. The public landing also has a pump-out, which we are advised is "pretty easy to use and free". Ed can also assist with locating short or long term parking.

## ANCHORAGES

Designated anchoring areas are shown on the Rockland chart, and there is ample space for anchoring. In our experience the harbor has a sticky mud bottom that grabs hold of both your anchor and its chain.

## LAUNCHES

Tony Fitch, son-in-law of CCA member Brad Willauer, will assist with launch service (gratis) for registration and our reception. Known in Rockland as PenBay Marine Services, Tony is an experienced captain, sailor, diver, and former Hurricane Island instructor. His vessel, *Asterias*, the aluminum craft at right, will be monitoring Channel 72 and he can also be reached by cell-phone: 207-462-7811.



Local launch service is also provided by Two Toots – phone: 207-594-2891. He indicated a rate of \$8 per trip each direction; his vessel will accommodate six passengers, and that fee will be the same for one or six.

As of 2013 the Rockland Yacht Club, located in the same building as the harbormaster near the public landing, will have its own launch and provide service to club members and the general public for a fee to be determined.



## THINGS TO SEE AND DO

The Rockland of 2013 is a very different place than the city some may remember from years ago. While retaining a fair amount of coastal fishing and other industries, Rockland now boasts many rehabilitated buildings and significant facilities for yachts as well as a host of things to do ashore. There are several excellent museums and art galleries, as well as quality restaurants and upscale shops.

The City of Rockland has an extensive **Visitor Information Center** near the Town Landing and the harbormaster's office. Additional maps and brochures from local businesses are available.

Visit [[mainedreamvacation.com](http://mainedreamvacation.com)] for comprehensive view of services and activities available in the area.

## MUSEUMS

- **Farnsworth Art Museum** [[www.farnsworthmuseum.org](http://www.farnsworthmuseum.org)] has a nationally renowned collection of more than 10,000 paintings and ongoing exhibits of the work of N.C. Wyeth, Andrew Wyeth and Jamie Wyeth at the Wyeth Center. Hours are 10-5, with admission of \$12 for adults, and \$10 for seniors and students. Rockland also has numerous art galleries within walking distance of the waterfront.

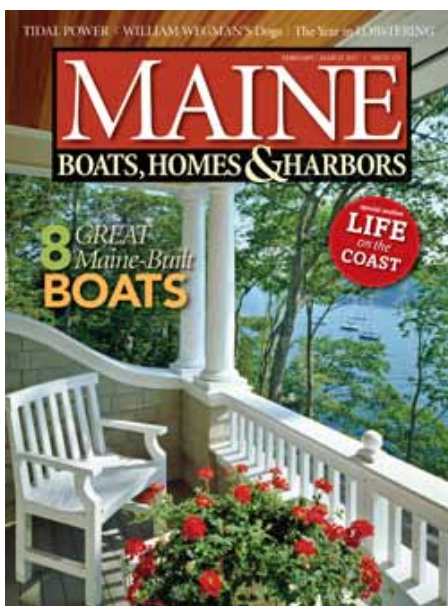


- **Maine Lighthouse Museum** is near the town landing at the Chamber of Commerce center, One Park Drive and open M-F, 9-5 with \$5 admission, \$4 seniors [[www.mainelighthousemuseum.com](http://www.mainelighthousemuseum.com)]
- **Sail, Power & Steam Museum**, founded by Capt. Jim Sharpe, is located south of Trident Marine at the old shipyard; open Weds to Sat, 10-4 [[www.sharpspointsouth.com](http://www.sharpspointsouth.com)]
- **The Coastal Children's Museum** at 75 Mechanic St. has a number of interactive exhibits [[www.coastalchildrensmuseum.org](http://www.coastalchildrensmuseum.org)]
- **Owls Head Transportation Museum**, Rte. 73, Owls Head, open 9:30-5. features beautifully reconditioned antique cars and airplanes. It is a short cab ride from town [[www.ohtm.org](http://www.ohtm.org)]



## OTHER INTERESTING PLACES TO VISIT

- **Project Puffin Visitor Center** is Audubon supported, open 10-5, at 311 Main St. [[www.projectpuffin.org](http://www.projectpuffin.org)]
- **Friends of Maine Seabird Islands** is at 9 Water St. [[www.maine seabirds.org](http://www.maine seabirds.org)]
- **Rockland Public Library** is at 80 Union Street and offers internet access.
- **The Apprenticeshop** is at the north end of town, a little beyond the ferry terminal at 643 Main St. Well known as a boatbuilding school as well as for its sailing programs, it houses a maritime library that is open to the public 9-4:30, M-F. This is a reference only collection on traditional boatbuilding, seamanship, mid-coast Maine, Rockland and the school's history. [[www.apprenticeshop.org](http://www.apprenticeshop.org)]
- **The Island Institute's Archipelago** is a shop with crafts and attractive items made by island inhabitants located just north of the Farnsworth on Main St. [<http://archipelago.nrostores.com/>]
- **Rockland is home to several schooners**, most of which operate out of the North End Shipyard. The city of Rockland also hosts festivals throughout the summer (see Maine Events of Interest).
- **Samoset Resort**, north of the breakwater, provides hotel, restaurant, golf, and conference facilities. One can walk the breakwater from the Samoset to the lighthouse - 1 mile each way. Their 18 hole golf course is public with clubs available for rent. Early reservations for a tee time and clubs are recommended (207-594-2511). Tennis is also available. [<http://www.samosetresort.com/>]
- **Maine Boats, Homes & Harbors** magazine has offices at 218 S Main St. This is the publisher who created the excellent USHarbors.com website featured throughout this cruise guide.



## SUPPLIES - GROCERIES & PHARMACIES

Rockland has two large supermarket stores:

- **Hannaford**, 75 Mechanic St. 207-594-2173
- **Shaws**, 235 Camden St., 207-594-8615

Both are about 1.25-1.5 miles north of the city and both include liquor/wine & beer, pharmacies; neither offers delivery.

**Rite-Aid Pharmacy** is close to Public Landing on Park St.



**Jensen's Pharmacy** is at 91 Camden St. (Route 1) a block from Hannaford. They are full service.

Local GMP members recommend their favorite specialty food shops:

- **Sweets & Meats**, 218 S. Main St, has wines, specialty food, pastries, lunches, papers, coffee.
- **Atlantic Baking Company**, 351 Main St, offers artisan breads and specialty coffees.
- **Jess's Market**, 118 S. Main St., specializes in fresh seafood.
- **Good Tern Natural Foods**, 750 Main St., features organic and locally grown foods.

## MARINE & HARDWARE

- **Pope Sailmakers** Doug Pope's loft is at 237 Park St., 207-596-7293 [[www.popesails.com](http://www.popesails.com)]
- **Gemini Canvas** is at 50 Tilson Ave., near Hamilton Marine. 207-596-7705 [[www.geminicanvas.com](http://www.geminicanvas.com)]
- **Midcoast Marine Electronics** at 700 Main St., 207-594-3993 , services most major brands of electronics. [[www.midcoastmarine.com](http://www.midcoastmarine.com)]
- **Winsor Consulting** (Ken Baker) in nearby Thomaston also offers marine electronics. Email: winsorconsulting@gmail.com 207-691-6350).
- **Evolution Marine** specializes in marine shaft system couplings and components. 207-593-9009 [[www.evolutionmarine.com](http://www.evolutionmarine.com)]
- **Thomaston Boat & Engine Works** specializes in Marine engines and generators; owned by Patrick Ricci 207-354-0200 or cell 207-542-2300. [[www.thomastonboatandengineworks.com](http://www.thomastonboatandengineworks.com)]
- **Weymouth Yacht Rigging** Loric Weymouth now runs his own company. 207-975-1405 [[www.weymouthyachtrigging.com](http://www.weymouthyachtrigging.com)]
- **Hamilton Marine** - Maine's largest discount marine retailer, has a well stocked store near the waterfront at 20 Park Drive 207-594-8181 [[www.HamiltonMarine.com](http://www.HamiltonMarine.com)]
- **Home Depot** is across Route 1 from Shaws at 270 Camden St.
- **Lowe's** is located west on Route 1 at the Rockland / Thomaston town line.







walk from the waterfront.

- **Primo**, located about a mile south of mid-town, has an excellent reputation for fine dining featuring locally grown, fresh ingredients. [[www.primorestaurant.com](http://www.primorestaurant.com)]
- **Rockland Café** serves good food three meals a day in a diner-like setting. [[www.rocklandcafe.com](http://www.rocklandcafe.com)]
- **Rustica** serves creative Italian fare including flatbread pizza. [[www.rusticamaine.com](http://www.rusticamaine.com)]
- **Suzuki Sushi Bar** serves Japanese dishes at 419 Main St. [[www.suzukisushi.com](http://www.suzukisushi.com)]
- **Brown Bag** is at the northern end of town at 606 Main St. serving hearty breakfasts, baked goods plus chowders and sandwiches for lunch. [[www.thebrownbagrockland.com](http://www.thebrownbagrockland.com)]

## LODGING

Historic inns abound in Rockland; Their website [[www.historicinnsofrockland.com](http://www.historicinnsofrockland.com)] provides links to all the following:

- Berry Manor Inn & Captain Lindsey House
- Granite Inn & Limerock Inn
- Ripples Inn at the Harbor

There are also lodging facilities of the motor inn type: Navigator Motor Inn [[www.navigatorinn.com](http://www.navigatorinn.com)] and Trade Winds Motor Inn [[www.tradewindsmaine.com](http://www.tradewindsmaine.com)]. At the north end of town, on a more luxurious scale, is the Samoset Resort. [[www.samosetresort.com](http://www.samosetresort.com)] Nearby Camden and Rockport also have a many lodging options. [<http://mainedreamvacation.com>]

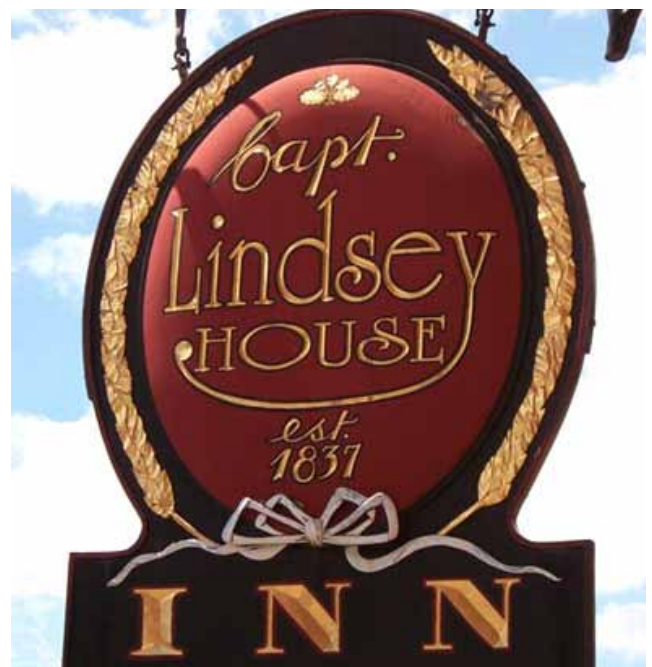
## LAUNDRY

In addition to services available at marine facilities, laundry and dry cleaning are offered by **Park Street Laundry** (207-594-9393) includes wash, dry and fold service. They are located at 117 Park Street. Farther north is **Garden Island Laundromat**, 42 Maverik Street, 207-593-7779.

## RESTAURANTS

For those who enjoy a meal ashore, GMP members recommend a variety of tasty stops:

- **Archers on the Pier** is near our reception area.
- **Café Miranda** [[www.cafemiranda.com](http://www.cafemiranda.com)] is a small, cozy bistro with a huge menu, just a short





# Castine Harbor

Chart: 13309

**August 9, 2013**

Sunrise: 05:33 EDT

Sunset: 19:51

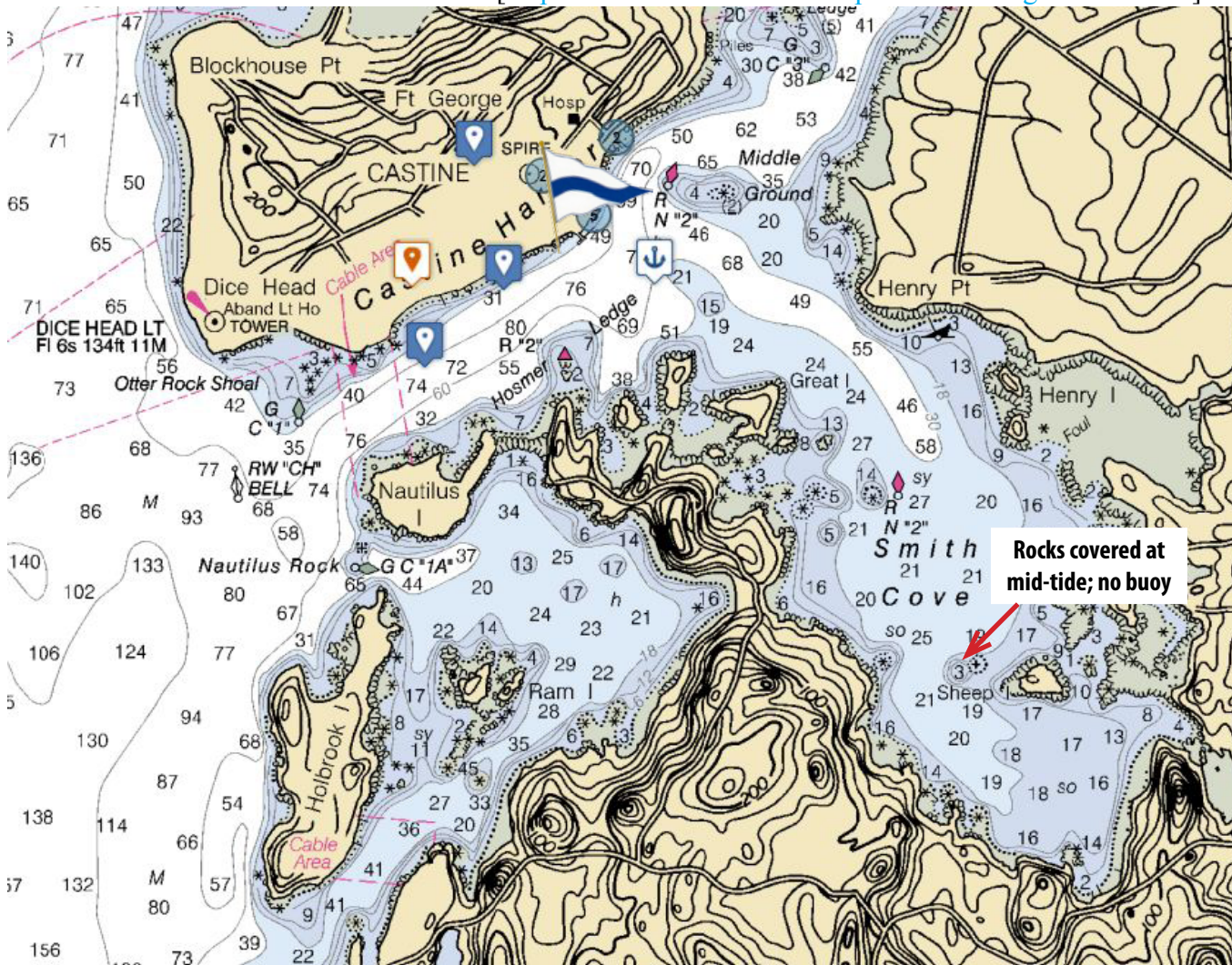
Tides	Time	Height
High	1:00	10.7
Low	7:12	0.0
High	13:23	10.3
Low	19:26	0.5

See last page for Aug 10 tides



## CHART

For an online version of the chart below: <http://me.usharbors.com/explore/harbor-guide/castine>





Castine is the home of the Maine Maritime Academy which will be hosting us for a series of events that have been arranged by Port Captains Peg Brandon and Peter Haddock with assistance from CCA member, Captain Jen Haddock. A Castine Map will be available at registration, as well as a map of the MMA campus.

## ENTERING THE HARBOR

A red and white bell marks the entrance off Castine Harbor, and should be observed to avoid cutting the shore of Nautilus Island too close to the rocks. The harbor is well marked, and the State of Maine training ship is prominent on the northern side of the harbor.



## DOCK FACILITIES AND MOORINGS

The Bagaduce River has a significant current, which, combined with the river's substantial depth, precludes anchoring off the town.

There is limited dock space in Castine; most of those offering dockage also offer moorings. The harbormaster is Sarah Cox, who also is the harbormaster in nearby Bucks Harbor - 207-266-7711 or VHF Channels 9/16. Assistant harbormaster for Castine is still to be named at press time.

- **Castine Town Dock:** The town has two floats east of Maine Maritime Academy, which allow dinghy tie-ups, and short-term dockage. Overnight docking is by arrangement with the Harbormaster. There are public restroom facilities at the town parking area above the floats. There is also a pump-out station at the "Acadian dock" (town dock).
- **Dennett's Wharf** (207-326-9045) has very limited dock space. It is primarily a restaurant.
- **Eaton's Boatyard** (207-326-8579) has twelve pontoon slips and ten moorings. This is a full service yard with gas, diesel, showers, a chandlery, brokerage, dive and repair services. Hail them on VHF Channel 9.



- **Castine Yacht Club** [[www.castineyachtclub.org](http://www.castineyachtclub.org)] has five guest moorings for use marked by white round floats with CYC Guest. They ask for a 24 hour time limit on each, and a contribution of \$25/night with the recommendation that vessels over 35 ft use outside moorings #3 and #5. Space may be available for overnight docking, but should be confirmed with staff. Showers are available on the ground floor and a \$5 contribution is requested. There is a small contribution also requested for disposal of trash, with instructions on the Castine YC website under visitor services. Dinghies should limit tie up time to 60 minutes.



## ANCHORAGES

Anchorage is available in Smith Cove, a large body of water to the southeast of Castine. Observe nun "2" at the west end of Hosmer Ledge and look for the opening between Great Island and Henry Point. The fleet of boats moored in this area belongs to Maine Maritime. Carry on into Smith Cove being certain to stay east of the second nun "2" and west of the unbuoyed rocks noted on the accompanying chart. Holding is reported to be very good in mud.

For those who enjoy a more remote setting, Holbrook Island Harbor may beckon. This anchorage is a bit tricky to enter from the south, and the preferred northern entry is marked with green can "1A."

## LAUNCHES

Launch service for our Friday evening event will be provided by Maine Maritime's launches. Use VHF Channel 71; hail "MMA launch" with your location. These are 30 person launches, and one will start running at about noon on Friday in a continuous loop between MMA and Smith Cove to accommodate those wishing to participate in the small boat racing. A second launch will be available from about 1500 on until members return from dinner later in the evening. Saturday launches will run prior to the barbecue until after dinner. Launches will not serve the Holbrook Island anchorage.

CCA members are encouraged to use the MMA boat basin for their personal dinghies, because town dock space is limited. MMA has made this space available especially for our cruise.

## 9 AUGUST - OPTIONAL CCA EVENT SMALL BOAT RACING

Colgate 26's will be the boat of choice for some competitive racing with friends. We will have a fleet of several vessels available. Those wishing to participate should plan on arrival at Castine by mid-day Friday. The group will race under the direction of MMA's Cullen Teel and his staff, with CCA members Brad and Ann Willauer our coordinators. Gathering will be ashore at the MMA waterfront at 1300 with an end time around 1600. Hail the MMA launch on VHF 71 or dinghy to the MMA boat basin. In the absence of wind, we will try to reschedule for Saturday afternoon at a similar time. Boats entering Castine harbor should be aware that small boats may be racing in or outside the harbor.





## CCA EVENT - FRIDAY, 9 AUGUST - LOBSTER BAKE DINNER

Cocktails and rum punch will be offered on the MMA waterfront, Andrews Hall, at 1700. Your large chips will buy one beer, or one glass of wine per chip. Two chips will buy a drink of hard liquor. Non-alcoholic beverages of water, soda and juice are available without charge.

Dinner will be served at the Harold Alfond Student Center at 1800. Those willing can walk up the hill to the mess deck. There will also be vans to accommodate those who would prefer a less challenging arrival for dinner. Beer and wine only will be available for purchase during dinner.

Launch service will be available for those moored in Castine Harbor or anchored in Smith Cove courtesy of MMA. There will be some room for dinghies behind the town floats and along the dock to the inside of the State of Maine.

## SATURDAY, 10 AUGUST - OPTIONAL ACTIVITIES AT MMA

- 0800 - 0900 - Breakfast at mess deck, Student Center
- 0930 - Bridge simulator session one at Bath Iron Works Center
- 1000 -1115 - Gumby suit / life raft training, MMA pool, lower level, Alexander Phys. Ed Ctr
- 1100 - Session two in simulator
- 1100 -1300 - Lunch, Student Center
- 1430 - Session three in simulator
- 1430-1545 - Gumby suit / life raft training, MMA pool
- 1600 Session four in simulator
- 1700 Rum keg and cash bar on waterfront, Andrews Hall
- 1800 Optional Barbecue and cash bar on the waterfront

### PARKING AND LAND TRANSPORTATION

From Route 1, head south on Route 175 at Orland for about eight miles to Route 166. Follow 166 to Castine. Off Battle Avenue, a left turn onto Main St. will take you to the town landing where there is limited parking. Pleasant Street, where the Harold Alfond Student Center is located, is one street further west.







## THINGS TO SEE AND DO

- For those who enjoy gunkholing up a river, a trip up the Bagaduce River is a treat. One may hesitate to take the “big boat” upriver, but time the current for a dinghy ride that can otherwise challenge your outboard.
- Walks - Holbrook Island Sanctuary. This wildlife sanctuary of 1230 acres was donated to the State of Maine by a descendent of the original Holbrook. One can land on the isthmus beach or the Holbrook Island dock.  
[[www.friendsofholbrook.org/p/park-map](http://www.friendsofholbrook.org/p/park-map)]
- Castine is a historic town, dating to 1613, and the town map provides a review of its history and outlines a walking tour.
- Witherle Woods [[www.mcht.org/preserves/witherle-woods.shtml](http://www.mcht.org/preserves/witherle-woods.shtml)] is a 185 acre preserve

maintained by the Maine Coast Heritage Trust with walking trails.

- Dyce Head Light, although now privately owned, has a footpath to the water nearby.
- Castine Kayak Adventures [[www.castinekayak.com](http://www.castinekayak.com)] offers kayaks for rent with and without instruction as well as bike rentals.
- The Town of Castine [[www.castinegolfclub.com](http://www.castinegolfclub.com)] maintains a 9-hole golf course which is open to the public. There are clay tennis courts available as well.

## MUSEUMS

- **The Wilson Museum** [[www.wilsonmuseum.org](http://www.wilsonmuseum.org)] at 120 Perkins Street, west from the town landing is open Monday-Friday 10-5, and on weekends 2-5; contributions welcomed.
- **T/S State of Maine** [[www.mainemaritime.edu/facts-a-figures/ts-state-of-maine](http://www.mainemaritime.edu/facts-a-figures/ts-state-of-maine)] Tours of the Training Ship State of Maine are offered daily 10-12 and 1-3 on the hour. The tours last approximately 30 minutes, and a photo ID is required. Practical footwear is required, and bags may be searched.
- **Castine Historical Society** [[www.castinehistoricalsociety.org](http://www.castinehistoricalsociety.org)] is located on the Village Green on Court Street and is open Monday through Saturday 10-4.



## SHOWERS/LAUNDRY

Maine Maritime Academy has offered the use of shower facilities at its Oakey Logan Alexander

Physical Education Center for members of the CCA. Laundry facilities (coin operated) can be found in several locations on campus.

## SHOPS

- **T&C Market** at 12 Water Street near the town wharf provides a limited selection of groceries (207-326-4818). Given the driving distance to a supermarket, cruise guests are encouraged to come to Castine well provisioned.
- **The Tap Room** adjoins T&C market and offers a bar with pizza, serving lunch and dinner.



## RESTAURANTS

- **The Pentagoet Inn & Restaurant** [[www.pentagoet.com](http://www.pentagoet.com)] offers elegant dining at 26 Main St. with reservations recommended.
- **The Manor Inn Pub & Restaurant** [[www.manor-inn.com](http://www.manor-inn.com)] is at 76 Battle Ave. Cocktails for our Friday event will be served at Maine Maritime's waterfront by the Manor Inn.
- **MarKel's** (formerly Bah's) **Bakehouse** offers freshly baked treats for breakfast and delectable sandwiches for lunch. WiFi available. Contact [downeastprovisions@yahoo.com](mailto:downeastprovisions@yahoo.com)
- **Castine Variety** on the corner of Main and Water provides breakfast and lunch at an old-fashioned soda bar. Owners also operate the **Breeze**, a take-out operation at the town dock, with a more limited menu; also offering ice cream.
- **Dennett's Wharf Restaurant** is on the waterfront and serves lunch and dinner.
- **Danny Murphy's Pub** near the town landing offers a pizza and bar menu.



### August 10, 2013

Sunrise: 05:34 EDT

Sunset: 19:50

Tides	Time	Height
High	1:36	10.6
Low	7:47	0.1
High	13:59	10.5
Low	20:05	0.5



# SOUTHWEST HARBOR

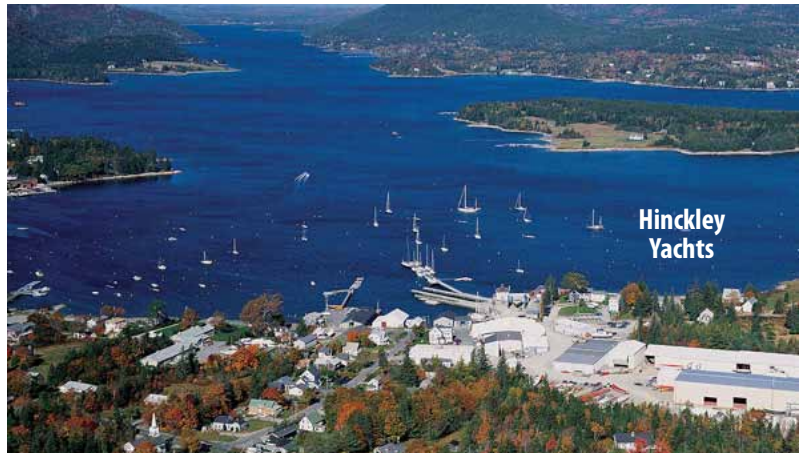
Charts 13321, 13318

**August 12, 2013**

Sunrise: 05:36 EDT

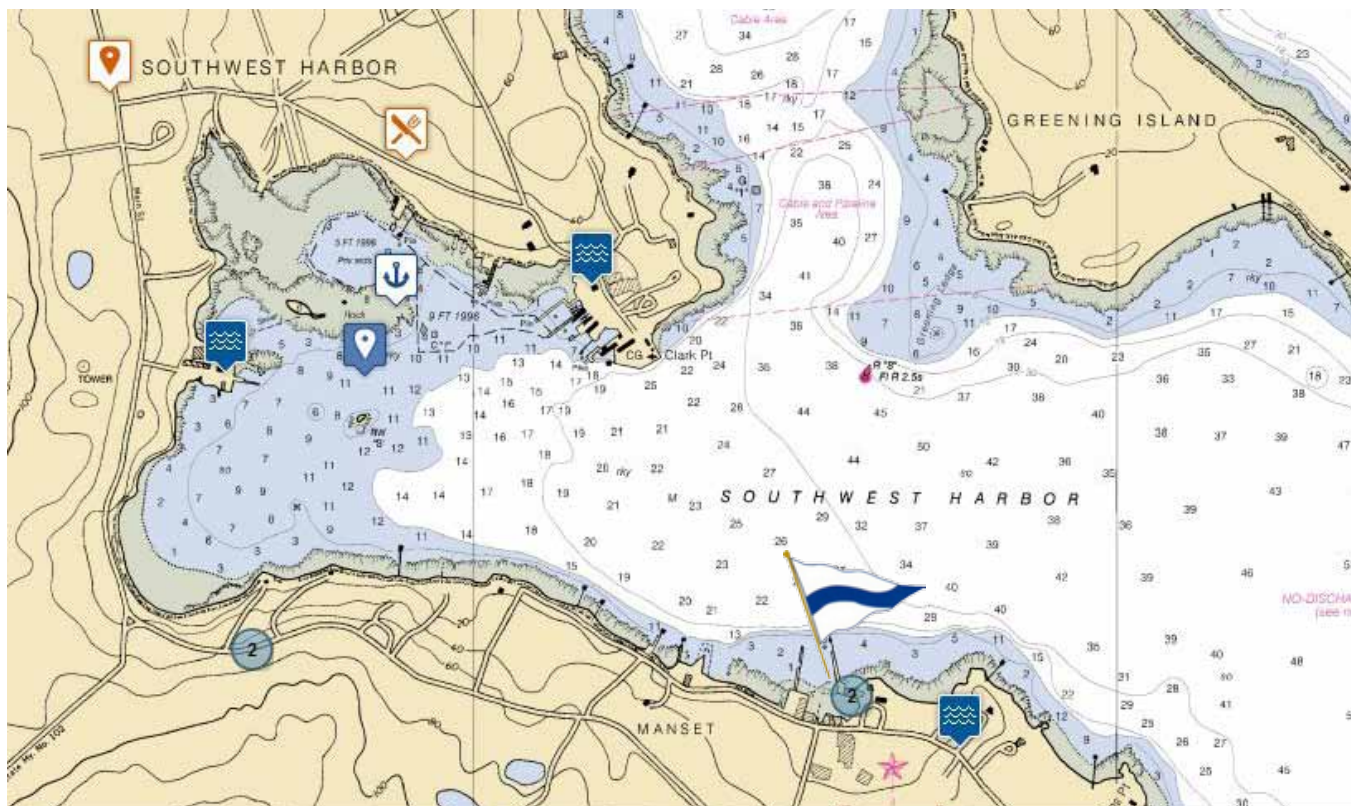
Sunset: 19:47

Tides	Time	Height (ft)
High	02:43	10.4
Low	08:27	0.3
High	15:07	10.8
Low	20:57	0.4



## CHART

The USHarbors.com website shows comprehensive detail for SW Harbor and the whole Mt. Desert area at [<http://me.usharbors.com/harbor-guide/southwest-harbor>]



Many cruising sailors reach the harbors of Mt. Desert Island, and, finding so many interesting harbors, attractions and things to do, never venture farther east. This area is known for its boat builders, fine sailing programs, and of course the vistas and activities to be found in Acadia National Park. Mt. Desert Island has active Chambers of Commerce – one in Southwest Harbor and one in Northeast Harbor –



that provide guidebooks which describe most of the island and the services and facilities available. These guides will be available at registration along with a map of the area for hiking. Bar Harbor has a separate Chamber that offers a guide as well; its busy harbor is used extensively by cruise ships.

### **ENTERING SW HARBOR**

Approaching Southwest Harbor from the west, the passage of Western Way is well marked, from Gong "1" off Long Ledge through the run past daymark "2" Bell "4" and Can "5". Once you are inside the Western Way, mind the several dangerous ledges making out from land, which are shown on the charts.

## **CCA EVENT INFO – Monday August 12th**

We will gather at the Hinckley docks for cocktails and dinner ashore commencing at 1700 with a buffet to be served at approximately 1800. Our evening will be catered by Jennifer Worcester of Sips, a local Southwest Harbor eatery. Jennifer is a former Hinckley employee who has assisted with or organized many a party for yachtsmen. Her local restaurant operates year round with a solid reputation, loyal customer base, and a notable wine selection. Jennifer also offers provisioning assistance to those who wish to pre-order either basic supplies or specialty items. Advance notice is preferred because you will be there in "high season" when things get very busy.

On Tuesday the Hinckley Company is offering tours of their high-end production facility in Trenton, a relatively new state of the art facility that now turns out all their boats, including sail, Picnic, and jet boats. You may be impressed by how the renowned Hinckley reputation is maintained by 240 skilled workers, using an impressive range of computers, robotics, CNC machine tools, and other precision equipment. The tours will be available to groups of eight to ten people at a time, and Hinckley will provide transportation to and from the Trenton facility starting at 0900 from a shorefront CCA base near the Hinckley dock.

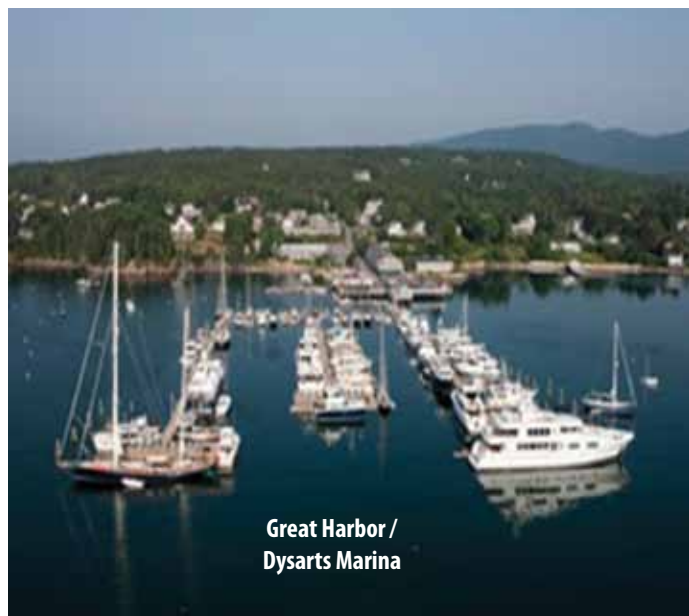




Those who prefer to wander around the waterfront at the Hinckley Service facility, just across the shore road from the dock, will find they have plenty of interesting service and repair projects going on at all times of the year, and many buildings that are hidden from its waterfront view. Informal and informative tours of this facility will be available as well. We are indebted to Phil Bennett, Vice President of Sales, for this opportunity.

## DOCKING & MOORINGS & ANCHORAGE

- **Hinckley Yachts** [[www.hinckleyyachts.com](http://www.hinckleyyachts.com)] has a large mooring field off its facility in Manset. Hinckley offers fuel (diesel, gasoline), water, pump-outs, ice, propane fills during the working week, showers, laundry machines, vessel repairs and service of all kinds. The yard has a 160 ton travel lift and 30 ton crane capable of handling most any vessel, and regularly stores over 200 boats inside. Many fuel at Hinckley because of the easy, well-fendered access and the pleasant and helpful dock crew. They maintain a fleet of about 50 reliable and well-maintained moorings, and will accept reservations. (207-244-5531, or VHF channel 10) By special arrangement, Hinckley has granted a mooring rate to the CCA cruise for our event, ranging from \$20 to \$25, depending on size, per night. Will Ratcliff is the operations manager at the yard, and has indicated he will work with members who have any kind of service needs. In addition to the marine facilities, there is a ship's store. Hinckley will provide launch service for our CCA event.
- **Beal's Lobster Pier** [[www.bealslobster.com](http://www.bealslobster.com)] near the US Coast Guard facility on the north side of the harbor, also has fuel and water. Beal's may have a few moorings to offer as well.



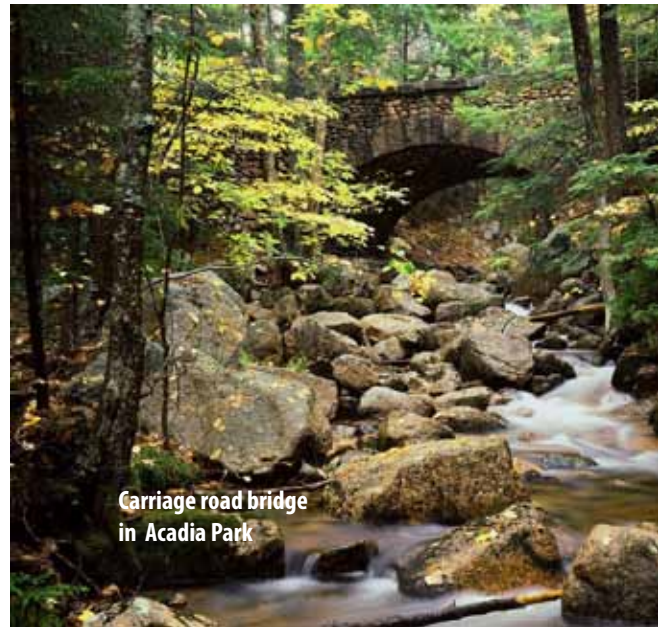
Great Harbor /  
Dysarts Marina

- **Great Harbor Marina** [[www.dysartsmarina.com](http://www.dysartsmarina.com)] lies at the head of the harbor with a large facility. There are slips, diesel, showers, Wifi and laundry. Marine stores are to be found ashore, including a West Marine just up from the dock, and it is a short walk into the village. Rates are posted on the website, and reservations are encouraged. (207-244-0117) Jane & Micah Peabody run Dysarts; Jane the office, and Micah the dock. We anticipate having a land shuttle to transport members from Dysarts to Hinckley (and return) for dinner on the 12th.
- **The Town of Southwest Harbor** maintains



7 moorings for visitors available on a first come/first served basis at \$25 per night for boats up to 50 feet. Adam Thurston is the harbormaster and can be contacted on VHF Channel 09 or 207-244-7913.

- **Anchoring:** There may be limited space to anchor outside of the moorings in Southwest. There is also space to anchor north of Southwest in the Connor Cove vicinity, and to the north of Greenings Island, where Hinckley also maintains a few good moorings.
- **CCA moorings:** Nancy McKelvy has a mooring noted in the “blue book” north of the Claremont Hotel. David Tunick lists a mooring off Great Harbor, and there is one in front of Stafford Keegan’s cottage in the harbor at Great Cranberry.



Carriage road bridge  
in Acadia Park

## COMING BY LAND

There is ample parking available in the area of the Hinckley yard, and there is a Hinckley sign at the main road to Manset (Maine 102A) marking the turn to the waterfront. Great Harbor Marina has limited parking – only if you have a boat there.

## GOING ASHORE - LAUNCHES

For our event the Hinckley Company has agreed to provide launch service with the launches they use for their mooring field. Call the Dockmaster on VHF Ch 10. They may also run down to the Marina for you, depending on how busy the launches are at the time. Please thank the launch drivers for this

courtesy, as they are probably volunteering their time.



At other times there is space for those moored in the area to tie a dinghy to the Hinckley dinghy dock, but please DO NOT tie up your dinghy to Hinckley’s main docks. Space to tie up a dinghy is also available at the Great Harbor facility.

## LOCAL INFO

Monday is a race day for the Northeast Harbor Fleet and there are sailing classes at the Community Sailing Center of Southwest Harbor. Both use Channels 72 and 73 extensively.

## THINGS TO SEE & Do

Look at the **Acadia National Park** website [[www.nps.gov/acad/index.htm](http://www.nps.gov/acad/index.htm)]. There are a large number of island trails shown and a great deal of information regarding the park. Check the Island Explorer schedule for shuttle service.

The Mount Desert area has a host of facilities and attractions. Please review the guides provided or look in advance at the websites for Southwest Harbor/Tremont and Northeast Harbor/Bar Harbor: [[www.acadiachamber.com](http://www.acadiachamber.com)], [[www.mountdesertchamber.org](http://www.mountdesertchamber.org)] and [[www.acdiamagic.com](http://www.acdiamagic.com)].



**Mount Desert Oceanarium**, 172 Clark Point Rd., SW Harbor, (207) 244-733 is a great hands-on place to take kids to learn about the oceans and marine life.

## MUSEUMS

- **Wendell Gilley Museum** [[www.wendellgillemuseum.org](http://www.wendellgillemuseum.org)] at 4 Herrick Rd. focuses on birds, and bird carvings. It is open Tues-Sat. 10-4 with admission at \$5, \$2 for those 5-12, and no charge for those younger.
- **Seal Cove Automobile Museum**, about 8.7 miles from the marina at 1414 Tremont Rd, Seal Cove Rd., has a small but interesting collection. [[www.sealcoveautomuseum.org](http://www.sealcoveautomuseum.org)]

## SUPPLIES - GROCERY & PHARMACY

(All info here supplied by Susi Homer, CCA member and local resident). The west side, or “quietside” of MDI does not have a supermarket like Hannaford’s or Shaw’s. We have a few small, family operated options for re-provisioning. All the markets are a little out of the way, about 1/2 mile, or better from Great Harbor Marina or town landings; however all except Gott’s, can be reached by the free and green, Island Explorer bus – read more under “Transportation”.



- **Southwest Foodmart**, 6/10th of a mile north of town, is the most complete and nicely priced market, but is a bit of a hike on foot. The market has a good meat market, a modest green grocer (no organic, ethnic or asian), excellent artisan breads, ready-made deli items, and of course the staples. It also has beer, (mostly mass market), wine (boxed, or modestly priced and larger bottles for a crowd) and



a good selection of spirits (the usual suspects; don't look for single malt Oban, but Goslings and Mount Gay rum are offered at state prices). Fortunately, the Island Explorer leaves town at the top of the hour and will drop you there. The bus returns on its loop at about 10 minutes before the hour if all you've bought is easily carried. Robin Nason, the GM, and Sandy Gray, the Assistant Mgr are more than happy to arrange deliveries of provisions back to your landing. Please call either at (207) 244 5601 to set up a delivery. Hours are 0800 to 2000 hours.

- Tip: Mornings around 10:00 are the best time to shop as most of the stock has been delivered and replenished. Also, fewer shoppers are there. Afternoons are more congested and avoid anything

after 15:30 as the shelves and cold cases have been "picked over" by then and the working force, as well as camping and rental folks pack the place.

- **Sawyer's Market** at 344 Main St. has been catering to the summer and boating crowd for decades and the prices are on the high side. Price aside, the market offers excellent customer service and a wonderful selection of organic fruits and veggies in season, as well as specialty teas, imported jams, fine wines, exceptional oils, etc. The proprietor, Brian Worcester also offers deliveries. Download the provisioning list [[www.sawyersmarket.com](http://www.sawyersmarket.com)] and email it with a delivery date and time, The staff is knowledgeable and cheerful and will help in any way. Contact: (207) 244-3315 Hours are 0530 to 2000 hours, Mon-Sat and 0700 to 2000 on Sundays.
- **Sawyer's Specialties** is across the street at 353 Main St. For replenishment of fine wines and local hand-made or imported cheeses, this is the place. Owned by Brian Worcester's brother, Scott, his shop offers a remarkable list of wines, with a thoughtful price range (\$10 and up). Scott and Mike are extremely knowledgeable and case lots enjoy the standard 10% discounts. They will also gladly deliver.
- For emergency runs, **Gott's Store** is south on Route 102 at 111 Bass Harbor Rd. It is the only place open 24 hours, seven days a week. Gott's is a traditional island general store, selling everything from pizza, gas, fly paper, motor oil, and a stand out back offering Gifford's ice cream. If Gott's doesn't have it, you probably don't need it. Travel to Gott's is best by cab. Call (207) 244-3431.





- **Carroll Drug Store** at Village Green Way, (207) 244-5588) is the one pharmacy in SW Harbor.

- Lest we forget, seek out the **Liquor Locker** (207) 244-3788 at 11 Seal Cove Road, for replenishment of wine, beer and spirits. Tom and Tyler Johnson have one of the top five liquor stores in Maine. The depth and breadth of selection of wines include: all varietals, regions and countries, as well as a huge selection of sparkling wines. The selection of micro-brewed beers is also quite remarkable. Deliveries for quantities can be arranged, and the store is an easy stop for the bus.



- While supplies are also available in Northeast Harbor at the Pine Tree Market, you will find a post office, library, bank, galleries, shops, and most everything one needs in the center of Southwest Harbor.

## SUPPLIES - MARINE & HARDWARE

- **Hamilton Marine** [[www.hamiltonmarine.com](http://www.hamiltonmarine.com)] is located at 165 Clark Point Rd.
- **West Marine** [[www.westmarine.com](http://www.westmarine.com)] is at 11 Apple Lane just ashore at Great Harbor.
- **McEachern & Hutchins**, a Trustworthy Hardware & Home Center, is located at 345 Main St., near the center of town. [[www.mceachernonline.com](http://www.mceachernonline.com)]

## LAUNDRY

The Village Washtub Laundromat [[www.villagewashtub.com](http://www.villagewashtub.com)] at 297 Main St. (207-244-7228) offers coin operated and service laundry options. There are also a few machines at Hinckley and at Great Harbor Marina.



## TRANSPORTATION

The local airport is Bar Harbor/Trenton BHB [[www.bhbairport.com](http://www.bhbairport.com)], with service provided by Cape Air and PenAir. Hertz and Enterprise rental cars are available at this Hancock County Airport.

A much larger airport is to be found in Bangor, serviced by Delta, US Air, and others. It's about an hour and twenty minutes by car to Southwest Harbor. Dial 511 (or 866-282-7578) and say "Southwest Harbor" for shuttle schedules of the Island Explorer, propane-powered vehicles which provide services to promote a car-free vacation experience. Visit

[[www.exploreacadia.com](http://www.exploreacadia.com)] for the shuttle service information, or call 207-667-5796.

**Grab a Cab** is the best in town. Paula Dunbar runs two cabs and she generally can be on site in 10 minutes, unless on a run to one of the airports. Rates are: \$15 minimum for in town; \$40/hr for shopping or area tour, up to 6 people; \$35 to Bar Harbor airport and \$95 to Bangor International; both up to 6 people. Paula's contact is 207-244-4155.

## RESTAURANTS IN SOUTHWEST HARBOR

- **XYZ Restaurant** [[www.xyzmaine.com](http://www.xyzmaine.com)] is located at the end of Bennett Lane, 80 Seawall Rd., and serves the best Mexican fare north of the Rio Grande River. (207-244-5221)
- **Red Sky Restaurant** [[www.redskyrestaurant.com](http://www.redskyrestaurant.com)] is at 14 Clark Point Rd. Reservations are recommended 207-244-0476.
- **Sips** [[www.sipsmdi.com](http://www.sipsmdi.com)] at 4 Clark Point Rd., offers breakfast, lunch and dinner. (207-244-4550).
- **Beal's Lobster Pier** serves up cooked local lobster and other Maine delights right on their dock at the north side of the harbor near the Coast Guard station. [[www.bealslobster.com](http://www.bealslobster.com)]

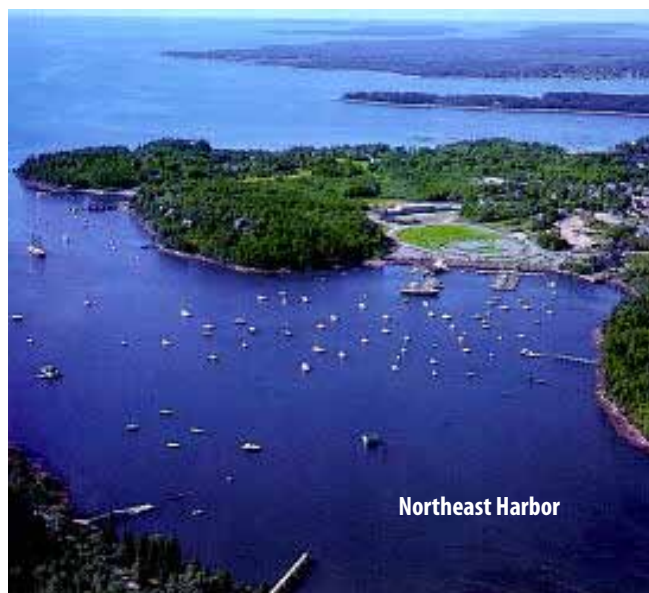
## NEARBY ANCHORAGES AND HARBORS

A sail up **Somes Sound fjord** can be exhilarating, and there is a nice harbor at the head. Somes Harbor is snug and well protected, open only through a narrow entrance to the south. There is no commercial traffic; it is thoroughly charming and restful, with space for anchoring outside the moorings. There is quite a bit of history to be found here and it is worth exploring. The MDI Historical Society has several exhibits.

[[www.mdihistory.org](http://www.mdihistory.org)]

The Mt. Desert Yacht Yard is near the head of Somes Sound, with a CCA mooring placed by E. Farnham Butler. The old Abel yard is also located near the head. Further south at Hall Quarry is the John Williams Boat Company who have a clever motto, "No corporate culture. No dealer incentives. No focus groups. Just Boats."

**Northeast Harbor** is a beautiful harbor with moorings and facilities but has little or no space in which to anchor. It is home to Clifton Dock just inside the mouth of the harbor, which also offers





fuel and water with a reasonable approach. The town marina's inner float is commercial with local ferry traffic, but there is space on an outer dock, and a large dinghy dock. The town has a number of moorings, and the harbormaster monitors VHF Channel 9. Morris Yachts maintains a service yard here, and has recently added its new charter fleet to this location.

[[www.visitnortheastharbor.com](http://www.visitnortheastharbor.com)]

In Northeast, one of the truly special places to visit is **Mount Desert Land & Garden Preserve**, site of Asticou Azalea Garden, Thuya Garden and Lodge, and the Asticou Terraces. The land and historic gardens are open to the public throughout the seasons. You are invited to enjoy

the quiet and contemplative settings of these carefully maintained natural landscapes that have been treasured by residents and visitors to the island over the past century. There is a wharf in the ENE corner of NE Harbor that leads directly into the walking paths for these magnificent gardens. We would rate these as "not to be missed" if you value beautiful places. The main website is [[www.gardenpreserve.org](http://www.gardenpreserve.org)] and on the site there is a map showing the wharf noted and the paths leading up into the gardens.

**Great Harbor Maritime Museum** collects, preserves, and celebrates the maritime heritage of the Mount Desert Island Region. [[greatharbormaritimemuseum.org](http://greatharbormaritimemuseum.org)]

The harbor off **Islesford in the Cranberry Islands** is another stunning location not far from the beaten path with glorious views of the Mt. Desert mountains. There is usually room to anchor and good protection from the prevailing SW winds. Islesford is an interesting community to explore with flat roads and friendly residents. You will find an art gallery, lobster boat tours and an active community calendar. There is a surprisingly good eatery at the head of the pier, Islesford Dock Restaurant. A true family restaurant – patrons of all ages enjoy the fun and the seriously good food.

[[www.islesford.com](http://www.islesford.com)]





# Roque Island

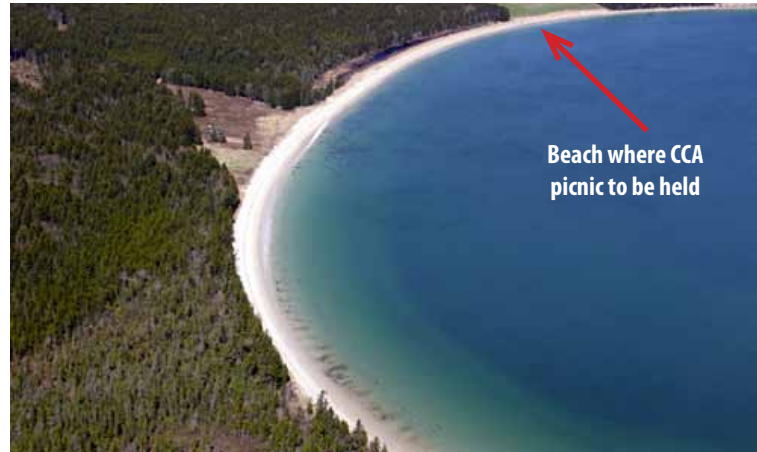
[Charts: 13325, 13326]

**August 15, 2013**

Sunrise: 05:32 EDT

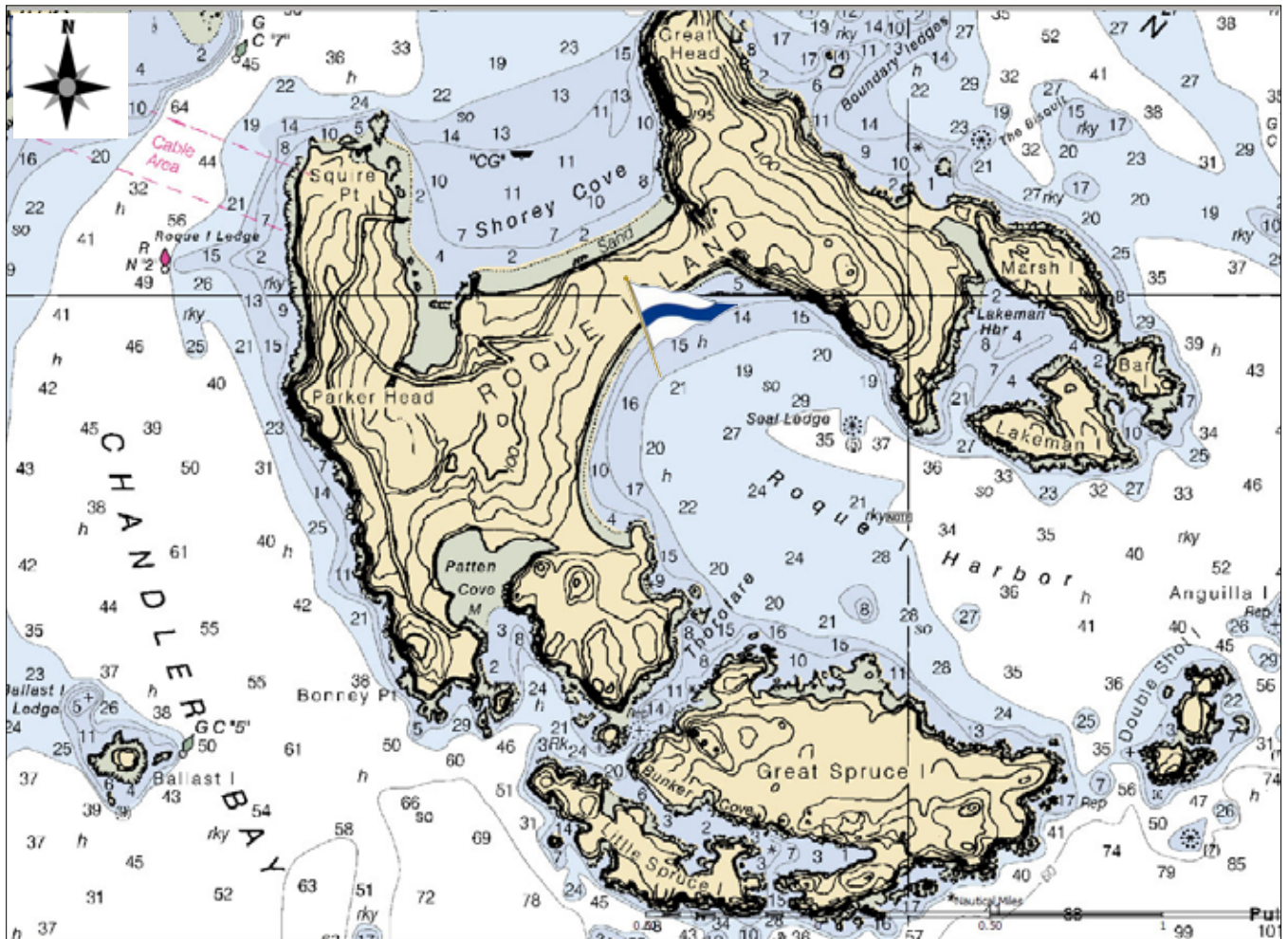
Sunset: 19:36

Tides	Time	Height (ft)
High	05:16	11.2
Low	11:27	0.8
High	17:40	12.8
Low	12:17 (16th)	0.3



## CHART

The USHarbors.com website [<http://me.usharbors.com/harbor-guide/jonesport>], shows Jonesport as the nearest harbor; scan east to find Roque Island.



Roque has long been a magnet for yachtsmen with its mile long sand beach, which is most unusual on the coast of Maine. If you have never visited Roque, once there, you will understand why sailors return. We are indebted to CCA members Bill Cook and Peter Driscoll for making arrangements with the Gardner and Monks families to allow the CCA group to land for this event.



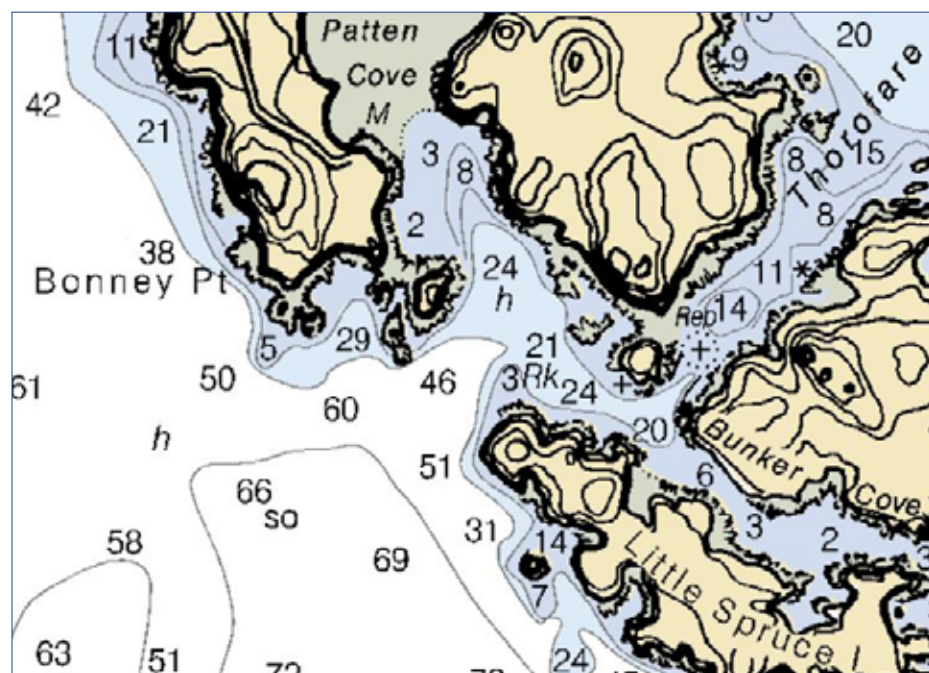
## ENTERING ROQUE HARBOR

The Thorofare is a narrow crooked channel that approaches Roque Harbor from Chandler Bay to the west. Enter between Little Spruce and Bonney Point. There is a small anchorage in Patten Cove to the north and some space in Bunker Cove. Both have moorings used by local boats. The Thorofare itself is narrow and there is reported to be a rock with 8 feet depth in the channel, but this report is disputed.

A somewhat easier approach for deep draft vessels (or the faint of heart) can be made through any of the passages through the islands: Great Spruce, Double Shot, Anguilla, or Halifax. A rock reported at 7 feet between Great Spruce and Double Shot is "reported" but not found by others. Approaching from the east, north of Halifax Island, stay well north to clear the charted 5 foot spot.

Avoid Seal Ledge, visible about 2 hours before and after low tide on the eastern side of the Roque Harbor. There is also a rocky point at the southern end of the beach, which is visible at half tide. The remains of an old weir still exist in this Southern area, as members who have anchored here can attest.

Taft's book shows the weir in a chartlet of the area.



## MOORINGS

No rental moorings are available. A few private moorings are described here, but we urge caution in using them.

## ANCHORAGES

At times there is a slight swell that tends to make into the harbor and the anchorage can experience a roll with an easterly or





Ross & Lucia Santy at  
Roque Beach - 1995

a storm offshore to the east. This is an area where a well set anchor is appreciated, since holding can be poor. The best anchorage is reported to be in the west northwest parts of the anchorage, where the bottom is softer.

### ALTERNATIVE ANCHORAGES

Bunker Cove, just east of the Thorofare where the channel meets the gut between Great and Little Spruce, offers shelter for a couple of boats. Patten Cove opposite Bunker

has a couple of moorings with unknown tackle; however, the depths are limited. Lakeman Harbor (to the east of Roque harbor) provides good shelter, and is a good alternative clear of any swell should the beach anchorage be untenable; however, watch the depth sounder.

On the northern side of Roque Island, Shorey Cove is also a good anchorage. The Monks and Gardner Clan own houses on the eastern shore of Squire Point and request some space. You will see houses, a pier and float on the Point, and should ensure that an approach is left clear for the owners. If strong winds from the east are expected, good protection can be found in the lee of Great Head. Northeast of Roque lies Calf Island which offers some protection in Johnson Cove for a few vessels.

## CCA Event - Thursday, August 15th Lunch at 1200 Hours

The CCA picnic on the beach will be catered by Emily Mawhinney, who runs the food service facility at Washington Academy. The lunch will include fish chowder and assorted rolls/wraps (lobster, crab, beef and veggie) with several salads to choose from and an assortment of beverages. Expect to see the famous keg as well. The repast will conclude with a blueberry treat during Maine's high blueberry season. Our thank you to Port Captain Greg Gebow, Jack Myles and Larry Hall for assistance in arranging transportation for our picnic.



CCA fleet at Roque Beach - 2006



## COMING ASHORE

Please observe signs posted by the owners and respect their privacy. We will wish to leave the beach cleaner than we found it and volunteers will be needed for a “Beach Patrol” to police up any possible remnants of our lunch before we return to our boats.

## SUPPLIES

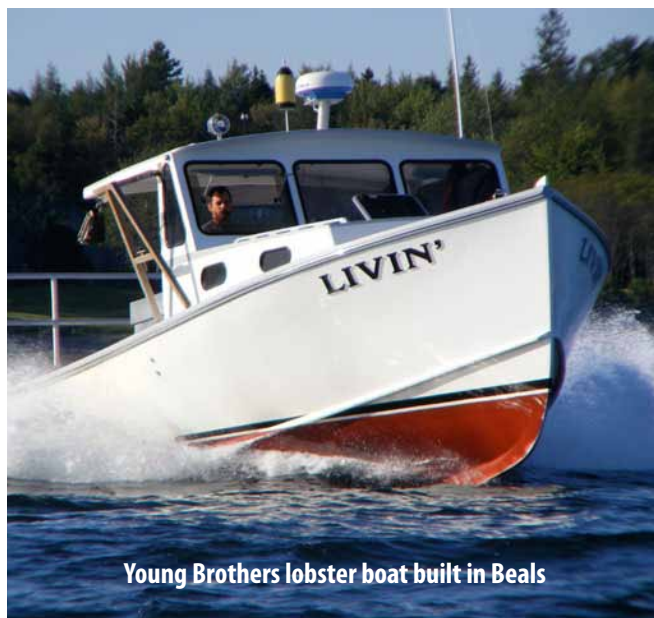
Jonesport is the closest town for supplies. The channel is well marked for many rocky reasons. However, one can anchor in the small Sawyer Cove area east of the town. Harbormaster for Jonesport is Russell Batson (207-497-5931), who monitors Channel 3 as well as Channel 16. There is a Town Landing with a dinghy dock; the floats have approximately three feet of water at low, so while it might be possible for two boats to tie up, tide is an important consideration. The IGA is nearby to the east, and there is a newer store a couple miles towards Columbia Falls. Hamilton Marine has a location here, and there is a True Value Hardware. Jonesport Shipyard has fresh water and a Laundromat, although tide is a consideration. O. W. Look has gas and diesel as well as lobster.

On the Southern side of Moosabec Reach is the fishing village of Beals. The Harbormaster is Gene Smith (207-497-5447) whose base is on the Beals side of Pig Gut. He can be hailed on VHF Channel 08 as “Taxman” (a retired teacher, he is also an accountant) or by his boat “Retired Days”. He advises that fuel is available on the Beals side at many wharfs that supply the lobster boats in the area.



## OFF THE WATER; ONTO THE PATH

A short distance from Roque on the northeastern side of Englishman’s Bay is **Roque Bluffs State Park**. The Park offers hiking trails, a sand beach with an inland pond which offers swimming possibilities in relatively protected water (and by Maine standards, warm water). The Park is open Sunrise to Sunset with a user fee of \$3/person/day. The local number for information is 207-255-3475. The park website is [[www.visitmaine.com/organization/2707/roque\\_bluffs\\_state\\_park](http://www.visitmaine.com/organization/2707/roque_bluffs_state_park)]. Charts show sufficient depth to anchor off the beach in a hard bottom in settled weather and dinghy ashore. The area is relatively exposed and not suitable for an overnight anchorage. The owners of Roque Island receive their supplies through Roque Bluffs at a dock at Shoppee Point.





## NEARBY GUNKHOLING

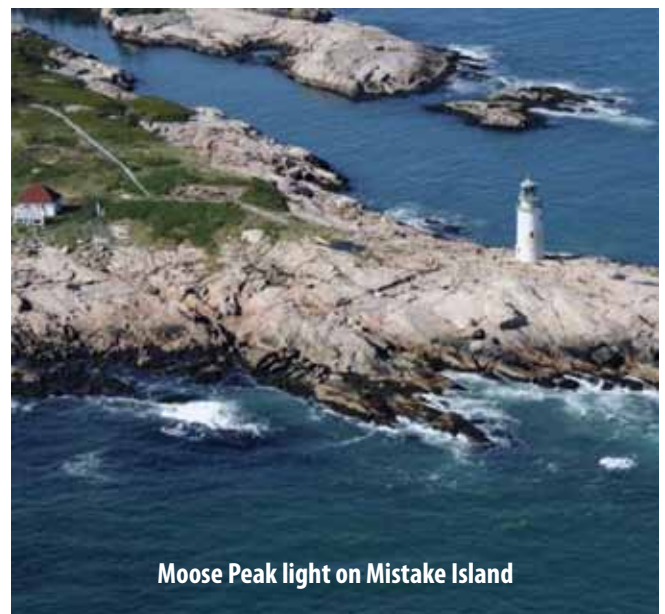
Taft recommends a look at Little Kennebec Bay and the potential hurricane hole of Moose Snare Cove but warns that silting has affected the depths, and recommends a rising tide. Englishman and Chandler Bays are relatively open, though one can explore the Chandler River as well.

Should you continue east a bit, the Machias Bay and River offer interesting views of an older Maine. This area is still in the process of being discovered, although many of the locals report change. The Cutler towers will loom in the distance: two arrays of thirteen towers each – transmitting at ultra-low frequencies for

submarine communication – and having tower heights of close to 900 feet at the center. This system of communicating with huge power at a very low frequency was put into place in the 1950s and remains essentially unaltered to this day. The transmitters are so powerful that they require their own generating station with a small tank farm to feed the diesels. Cross Island was once a base of the Hurricane Island Outward Bound School, and formerly had a Coast Guard Station. There is an anchorage suitable for a few vessels southwest of Mink Island. The harbor of Cutler itself is a frequent stop for vessels heading further east to Canadian waters.

Those heading westward might consider a stop in the Great Wass area. The Cows Yard is a favorite of some; others prefer the Mistake Harbor area or an anchorage nearer to Crow Point. The Mud Hole is a tiny, well protected anchorage that is difficult to enter, but provides a secure spot close to the Nature Conservancy's Great Wass Island preserve. [[www.nature.org/ourinitiatives/regions/northamerica/unitedstates/maine/placesweprotect/great-wass-island.xml](http://www.nature.org/ourinitiatives/regions/northamerica/unitedstates/maine/placesweprotect/great-wass-island.xml)] We suggest running up in the dink at low before going in with a larger boat. Sand Cove (next to Mud Hole) may offer an alternative in that vicinity if the anchorage is full or one prefers to scout it by dinghy. For the adventurous there is a marked passage through the islands that allows boats from Jonesport and Beals to fish this area.

Salmon pens are reported off Spectacle Island and south of Sand Cove North. There are numerous lobster traps in the area, home to a large fleet of lobster boats. Further west, Western Bay is untenable as an anchorage due to the quantity of lobster gear.



Moose Peak light on Mistake Island

## The Gardners – A Sailing Family

George Peabody Gardner, owner of Roque Island, writes in 1959 of crossing the Bay of Fundy from Cape Sable to Roque on board his 50' Yawl, Glide. Oscar, paid skipper and cook, was ashore in a hospital as a result of an accident. Gardner had three friends for crew. Mr. Gardner writes:

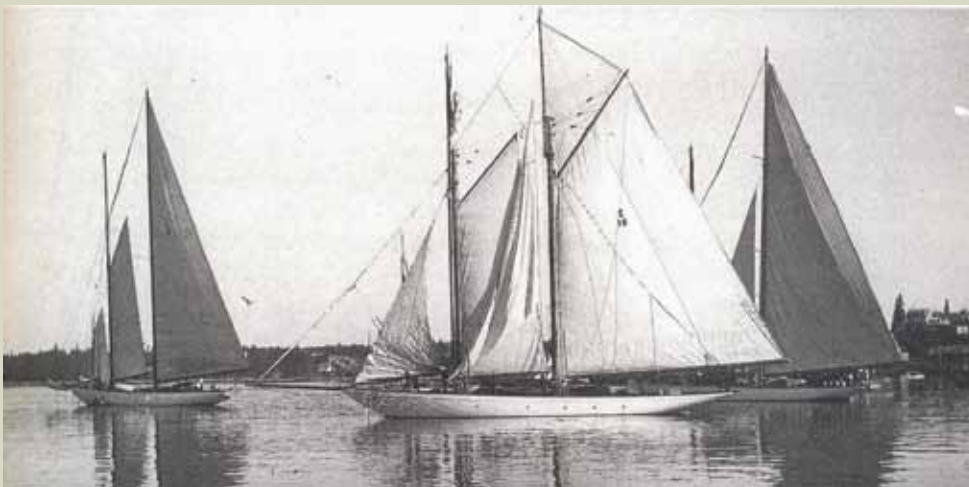
"We found the whistle off Seal Island (Cape Sable, the southwest corner of Nova Scotia) without difficulty and put the Glide on her course for Libby Island, Maine. A nice fair breeze, and after lunch we hoisted the spinnaker and began clocking off the miles. Our troubles, we thought, were now over. What a kick it gave us to enjoy a fine wind and a moderately smooth sea, even if the skies were overcast and the sea rather greasy looking.

By evening the wind had freshened considerably, so much so that when we took in the spinnaker, under which we had been doing eight knots or better by the Kenyon speedometer log, we were soon going just as fast without it. We sighted what we thought was a buoy but which turned out to be the Lurcher Lightship. We passed it at 6:50 P. M. although we had not figured on passing it until 8 P. M. at the earliest. This plainly showed what the tides can do in that region; our usually accurate log was off by seven miles.

Just before dark – we were approaching the Bay of Fundy – it began to rain and to blow even harder. We decided it would be wise to take down the mainsail while there was still light, especially as at the rate we were going we might come up on Libby before dawn. Soon we were going as fast under forestaysail and mizzen as we had been with spinnaker and mainsail.

By then the rain was lashing us and the sea was really angry. All around us was a wild confusion of whitecapped waves, a colossal stampede of maddened white horses, rearing, galloping, and tumbling. To look behind was truly terrifying. Seas came roaring toward us, threatening to break over our stern and overwhelm us with tons of water. Time after time it seemed nothing short of miraculous that those enormous waves instead of engulfing us would merely raise our stern skyward and then continue on their mad career.

It became a constant fear that we would not be able to check the wide swings of our bow in time to prevent the Glide's broaching to and being rolled over and smothered by those frenzied waves. To steer a straight course was impossible. In vain we hoped the cloudbursts of rain would knock down the sea and moderate the wind. Once we caught a distant glimpse of a bobbing light of some fishing boat; except for that we were very much alone.



Typical schooner yachts of the era



Dumpy and I were on deck until midnight. Shortly before then the four of us, with some difficulty had taken in the mizzen, and under foresail alone we still were logging eight knots. At one stage, when the sea was roaring loudest, Dumpy leaned toward me and shouted, "Maybe the boys at the Somerset Club, after their boiled salmon with sauce verte, have something on us after all".

At midnight Jimmy and Bill Cox took over. Conditions were then so bad that the thought of life jackets had been forced into my mind. In my entire cruising experience I had never had occasion to don one, but it seemed clear that this was rapidly becoming an occasion for which a life jacket was designed, if ever....

A little later, while I was hanging on in my bunk, trying to doze, I heard shouts from Jim on deck. He and Bill had picked up a fog signal and feared we might be close aboard. I withstood the impulse to rush on deck in scant attire, taking time to clothe myself fully before going up to face the highly disagreeable elements and the new complication.

There were three possibilities. The sound might have been from Machias Seal Island. In that case we were all right if we kept it to starboard; if to port - oh, oh! Or from Libby, for which we were aiming but which we had no desire to come up on in pitch darkness; Libby was no place to make a landing at the rate we were going. Or it might have been Moose Peak, in which case we were well off our course and facing plenty of trouble on either side....

After a while we no longer heard the fog signal...there was no sense in running a needless risk, so we gybed over and backtracked on our course as closely as possible.

When daylight began to dawn and we had a hundred yards or more of visibility, we turned back on our course and soon picked up the sound once more. This time we were able to assure ourselves that it definitely came from Libby. As

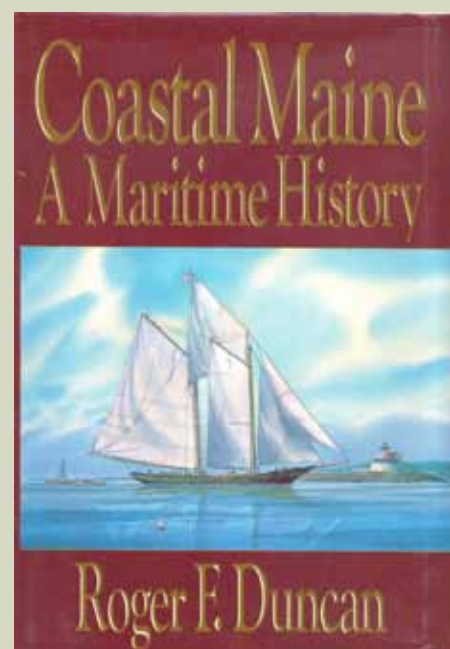
things turned out, we still had some way to go, and it was actually over an hour before we saw the loom of Libby. Here we went in close, laid our course for the bell off The Brothers, and from The Brothers we could see clearly enough not to worry any more. Soon we were off Great Head (Roque Island); a few minutes more and we were tying up at our own mooring at Roque. Never did the call from the bow, "All secure, Captain!" sound sweeter.

Off came the oilskins, off peeled the wet clothes! Down went a slug of Bourbon! - then hot coffee - a sizzling steak!

And so to bunks."

Anyone who will cross the Bay of Fundy in rain and fog at night in a gale of wind without Loran, radar, or radio direction finder is man of skill and courage.

The last line is from CCA member Roger Duncan, at page 512 of his 1992 book, "Coastal Maine, A Maritime History." Roger had quoted Mr. Gardner's Fundy Crossing from Mr. Gardner's book "Ready About."



## PUFFIN WATCHING – MACHIAS SEAL ISLAND

Who can resist these colorful creatures that look like a rain forest parrot and fly like a helicopter. If you wish to take advantage of the rare opportunity to see these birds up close and personal, then Machias Seal Island may be just the ticket.

Machias Seal is an island in the Gulf of Maine, approximately 15 miles ESE from Roque. Canada and the United States both claim sovereignty. The Canadian Coast Guard continues to staff a lighthouse on the island; the first lighthouse was constructed there in 1832.

This is one of the very few breeding colonies where visitors are allowed to land on the island and get close to the birds. You can observe at very close range the following in the breeding season: Atlantic Puffin, Razorbill, Common Tern, and Arctic Tern. Common Murres, while not normally nesting on the island, are often seen sitting on the rocks. Leach's Storm-petrel breeds on the island, but is not usually seen because they enter and leave the nesting burrow at night. A few pairs of Common Eiders breed on the island.

As one approaches the island, you will see all these birds on the water and flying into the island. You may also see Manx, Sooty, and Greater Shearwater, Black Guillemot, Northern Gannet on the trip to the island. The best time to visit is between the middle of June and the middle of July. The Puffins can be on the island from early June and immature Puffins are seen in the water around the island until mid August.



In order to protect the nesting seabird colony from excessive disturbance, visits on the island are limited to a selected number of days during the season, and only a limited number of visitors are permitted ashore on any day. Visitors must stay in designated areas and spend no more than three hours. See this website for more information about landing on the island:

[[www.neseabirds.com/machias.htm](http://www.neseabirds.com/machias.htm)]

A trip to Machias Seal should only be undertaken in settled weather with good visibility.



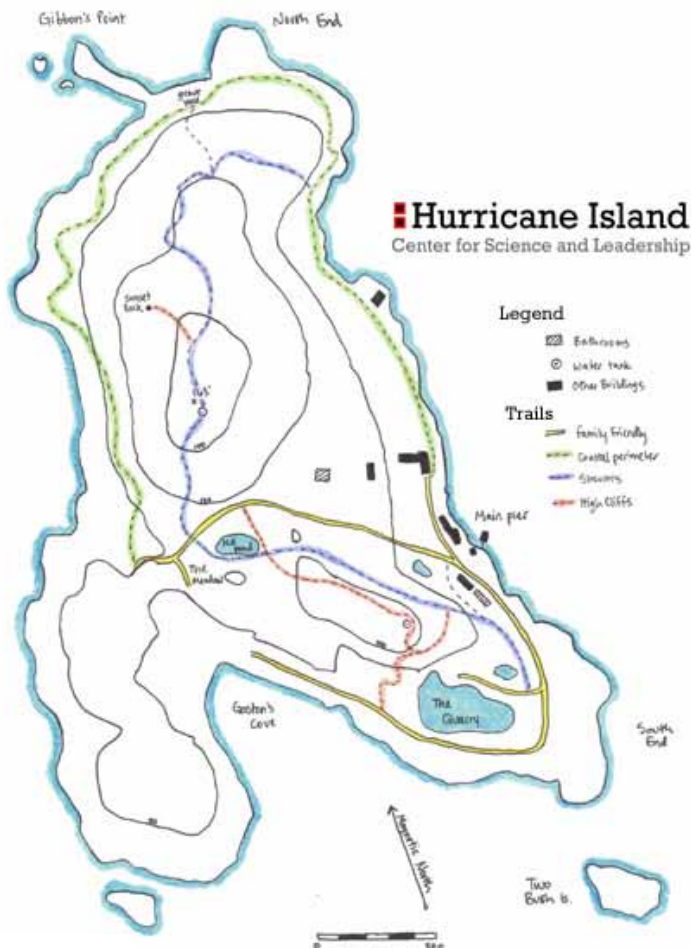
Machias Seal Island

# ALONG THE WAY

Here are a few suggestions of places you might enjoy on the Maine Coast, some of which have historic ties to the CCA and its members

## HURRICANE ISLAND

Barney Halowell, recently appointed Executive Director, ([barney@hurricaneisland.net](mailto:barney@hurricaneisland.net)) has indicated the following for those interested in this historic spot with long ties to Outward Bound: "For moorings we have four 3000-pound moorings, and 40 feet of dock space. The Ocean Cruising Club came through last summer with 22 boats and seemed to manage fine, with many boats rafting or anchoring, but of course, all would be dependent on the weather. Regardless, we'd be happy to have you all ashore." [[www.hurricaneisland.net](http://www.hurricaneisland.net)]



## CURTIS ISLAND LIGHT

Curtis Island Light guards Camden Harbor, and for 35 years past CCA member Connie Conover and his wife Deedee spent summers maintaining the island and lighthouse for the Town of Camden. They also provided historical information for visitors. Connie sailed his final voyage in 2010, and now Deedee continues this tradition. She has suggested that members are welcome to bring a picnic ashore; landing on the beach at the NE corner. Deedee's cell phone is (207) 542-8300.



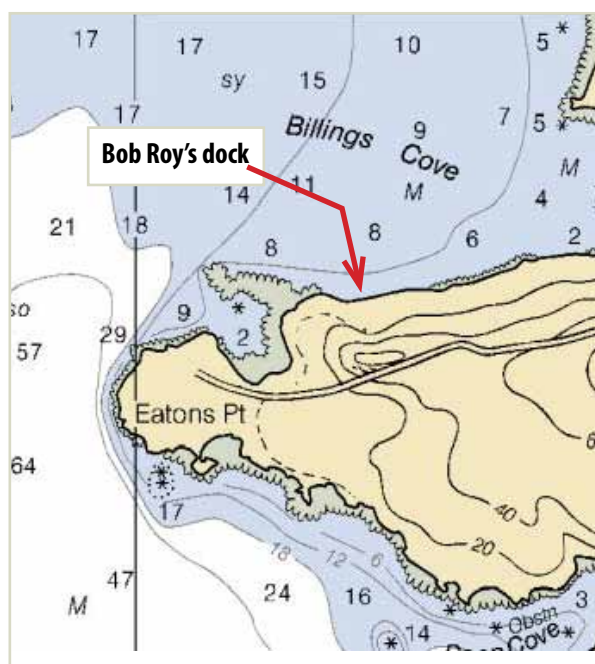
## PENOBSCOT MARINE MUSEUM

The Club's 2001 Maine cruise included a tour of this museum, which hosts many historical collections reflecting the activities of the Penobscot Bay community and the travels of its vessels. [[www.penobscotmarinemuseum.org](http://www.penobscotmarinemuseum.org)] The 2013 summer exhibit is entitled: "For Those in Peril: Shipwrecks, Memorials, and Rescues." One can land at the Searsport town landing, follow Steamboat Road to Route 1 and walk to the museum complex. The walk is about 1 mile. Further north, Fort Point State Park has a large dock for those interested in time ashore. The cove to the north can accommodate a number of vessels and was the site of the 2001 cruise gathering.



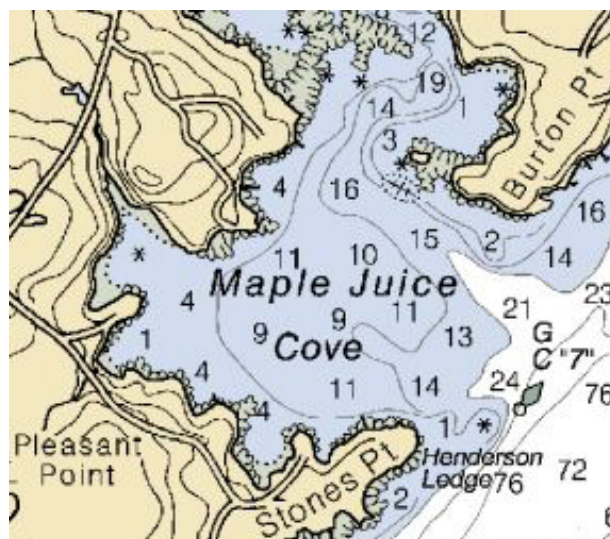
## DEER ISLE THOROFARE

The Thorofare and Merchants Row south of it offer a variety of anchorages and islands to explore. Some members may recall that CCA member Bob Roy and his wife Joan have a guest mooring in Billings Cove, off the Thorofare's eastern end. Bob and Joan would welcome members ashore. Their granddaughter will be married at this location in late August.



## 1988

Maple Juice; Marsh Cove - North Haven; Pretty Marsh; Benjamin River



## 1992

Bartlett's Island, Southwest Harbor, Seal Cove - Vinalhaven, Smith Cove - Castine

## 1997

Perry Creek - Vinalhaven, Somes Sound; Morgan Bay, Roque Island, Flander's Bay, WoodenBoat - Eggemoggin Reach

## 2001

Rockland, Bass Harbor, Fort Point Cove

## SITES OF PRIOR CCA CRUISES

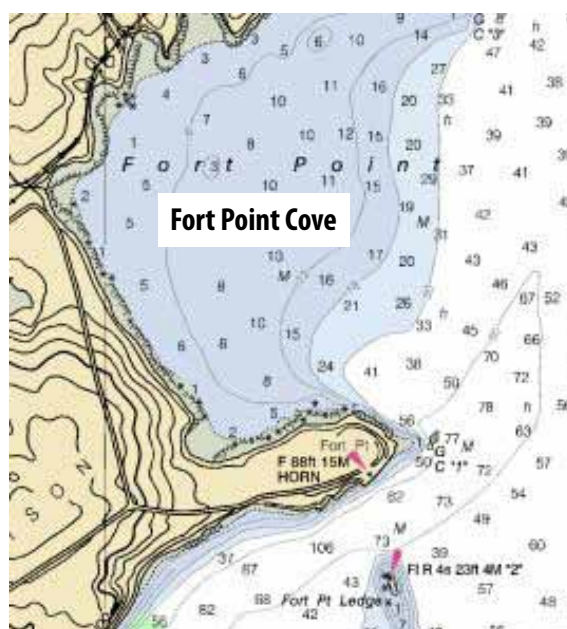
Past Commodore Jim Harvie shared his collection of cruise bulletins from 1969 to date that have included Maine. There are a number of special places mentioned, including some that are not included in this cruise that are worthy of mention. They are listed by year:

## 1969

Pretty Marsh, Benjamin River - Eggemoggin Reach

## 1978

Maple Juice Cove, Pulpit Harbor, Torrey Isles-Eggemoggin Reach, Seal Cove-Mt. Desert, Kollegewidgwock YC-Blue Hill, Seal Bay-Vinalhaven



# Additional Useful Information

## Charts, Pilots and Cruising Guides

### CHARTS

13003	1,200,000	Sep. 2012	Cape Sable to Cape Hatteras
13006	675,000	July 2012	West Quoddy Head to New York
13009	500,000	Sep. 2010	Gulf of Maine & Georges Bank
13299	80,000	July 201	Monhegan Island to Cape Elizabeth
13293	40,000	Oct. 2010	Damariscotta, Sheepscot & Kennebec Rivers
13295	15,000	Oct. 2002	Kennebec & Sheepscot River Entrances
13296	15,000	Jan. 2012	Boothbay Harbor to Bath
13301	40,000	Aug. 2011	Muscongus Bay, New Harbor, Thomaston
13302	80,000	Dec. 2011	Penobscot Bay & Approaches
13303	40,000	June 2011	Approaches to Penobscot Bay
13305	40,000	June 2012	Penobscot Bay
13307	20,000	July 2012	Camden, Rockport & Rockland Harbors
13308	15,000	Dec. 2011	Fox Island Thorofare
13309	40,000	Aug. 2010	Penobscot River, Belfast Harbor
13312	80,000	Aug. 2006	Frenchman & Blue Hill Bays & Approaches
13313	40,000	July 2004	Approaches to Blue Hill Bay
13315	20,000	May 2012	Deer Isle Thorofare & Casco Passage
13316	40,000	Sep. 2011	Blue Hill Bay
13318	40,000	Aug. 2002	Frenchman Bay & Mount Desert Island
13321	10,000	Mar. 2003	Southwest Harbor & Approaches
13322	10,000	June 2012	Winter Harbor
13323	10,000	Sep. 2004	Bar Harbor, Mount Desert Island
13324	40,000	Nov. 2003	Tibbett Narrows to Schoodic Island
13325	80,000	Aug. 2004	Quoddy Narrows to Petit Manan Island
13326	40,000	Apr. 2004	Machias Bay to Tibbett Narrows
13392	50,000	Feb. 2011	Grand Manan Channel Southern Part
13394	50,000	July 2002	Grand Manan Channel Northern Part
13396	20,000	May 2010	Campobello Island, Eastport

The new USHarbors.com website [<http://me.usharbors.com>], a service of *Maine Boats, Homes & Harbors* magazine, connects boaters to shoreside information and businesses by providing free, printable nautical charts, tide charts, marine forecasts, weather buoy data, etc. The charts are scalable using a +/- slider on the chart.

An alternative online chart service is NOAA's website – to access either raster or vector charts. There are various ways to do this, but one straightforward way is:

- Go to <http://www.charts.noaa.gov/OnLineViewer/AtlanticCoastViewerTable.shtml>

- Scroll down to the chart you wish to view and use the tools to zoom in
- Adobe Flash is required for zooming in and out button, but right clicking may work, depending on one's browser
- These charts are available for download from this site, but note the requirements and agreements
- Vector charts are also available for those who prefer them

Conventional charts are priced at \$20.75 each and are available from many sources. Print on demand charts, updated to the latest NTM are available through Landfall Navigation and Bluewater Books at a higher cost. Currently West Marine stores in Maine – Southwest Harbor and Portland, will order them.

Maptech Region 2 Chartkit: Block Island to the Canadian Border, 15<sup>th</sup> edition with CD \$139.95

Electronic Charts are available for this area by Garmin, C-Map, Navionics, Maptech and Nobeltec. Check plotter type and software for requirements.

## COAST PILOT

Eastport, ME to Cape Cod, MA 2012 – 42<sup>nd</sup> edition - \$30.00  
(Typically issued in April for the current year)

## TIDES AND CURRENTS

The NOAA website provides an online prediction source for tides at:

[http://tidesandcurrents.noaa.gov/tide\\_predictions.shtml](http://tidesandcurrents.noaa.gov/tide_predictions.shtml) Click on the area of interest, and select the site and day desired. This is a favorite site for those who enjoy having another prediction source besides VHF radio.

Current information can be found at: <http://tidesandcurrents.noaa.gov/currents13/tab2ac1.html#3> . While most sailors are familiar with the Bay of Fundy currents, there are a few places in Penobscot Bay where the current can be significant. The Bagaduce River where Castine is located, for example, has currents up to 4.2 knots. The Penobscot River also has a significant current, making tides an important consideration.

*NOAA Tide Tables of North & South America 2013* - \$16.95

*2013 Eldridge Tide & Pilot Book* - \$14.00

## CRUISING GUIDES

*A Cruising Guide to the Maine Coast*, 5<sup>th</sup> Edition (2008) – Taft & Rindlaub \$44.95

(Recommended as one of the best guides. CCA member Jan Taft, widow of Hank Taft, lives in Camden)

See also: [www.maine coastguide.com](http://www.maine coastguide.com) for excerpts and updates

*Cruising Guide to Maine*, 2<sup>nd</sup> edition – S. Johnson

Vol I - Kittery to Rockport (1995) \$29.95

Vol II - Rockport to Eastport (1994) \$34.95



*The Cruising Guide to the New England Coast*, 12<sup>th</sup> Edition (2002) – Robert C. Duncan,  
Robert S. Duncan, W. Wallace Fenn, and Paul W. Fenn \$49.95

*A Visual Cruising Guide to the Maine Coast* (2006) – James L. Bildner - \$39.95

*The Coast of New England: A Pictorial Tour* (1996) – Stan Patey  
*Embassy Guide to the New England Coast 2012* – 9<sup>th</sup> Edition – Maptech - \$39.95

*Northern Waterway Guide 2012* - \$39.95

*ACC's Guide to New England Marinas – Halifax, NS to Wickford, RI* - 8<sup>th</sup> Edition- \$39.95

## **BOOKS OF INTEREST**

*Islands of the Mid-Maine Coast*

*Vol. I - Penobscot Bay* (Revised 1997) List \$35 paper  
Charles B. McLane and Carol Evarts McLane

*Blue Hill Bay* (originally part of Vol. I) \$26.25 paper  
*Vol II - Mount Desert to Machias Bay* – Charles B. McLane List: \$45

*Vol III - Muscongus Bay & Monhegan Island*  
Charles B. McLane List \$29.95 paper

*Vol IV - Pemaquid Point to the Kennebec River* (March 1995)  
Charles B. McLane List \$35 paper  
(This series focuses on the social and economic history of Maine islands)

*Islands in Time* – Philip W. Conkling – 3<sup>rd</sup> edition 2011 - paper \$29.95  
(A natural history by the founder of Maine's Island Institute focussing on geology, ecology and ecosystems) <http://www.islandinstitute.org/>

*Lighthouses of Maine* - Bill Caldwell  
(A quick look and a bit of history)

*Coastal Maine: A Maritime History* - Roger F. Duncan .

# Medical and Emergency Contacts

## AFLOAT

The emergency channel is VHF channel 16, or on single sideband, 4125 kHz. Hail: "Coast Guard Sector Northern New England" or "Coast Guard Group Rockland/Southwest Harbor/Jonesport", and/or call "Pan-Pan" or "Mayday". A DSC call will go out on Channel 70 and automatically switch to Channel 16 for further information and response,

The Coast Guard in Maine has consolidated its command and safety offices at USCG Sector Northern New England, based at 259 High Street, So. Portland, ME 04106-0007. The Sector maintains a 24 hours Operations Center reached by calling 207-767-0302. They are responsible for response regarding Coast Guard assets, search and rescue, and oil spill response throughout Maine. Stations in our cruise area include:

Rockland	207-596-6667 – CWO Arnsdorf
Southwest Harbor	207-244-4270 – Sr. Chief Petronis
Jonesport	207-497-2200 – OIC Purdy

The Coast Guard also maintains stations in South Portland (307-767-0302), Boothbay Harbor (207-633-1643) and Eastport (207-853-2845). Offshore vessels requiring medical evacuation by helicopter may expect that Sector Northern New England will make the call.

## ASHORE

If an emergency occurs while ashore or docked call 911. Calls made by cell phone will not provide an exact location, but only an approximation of latitude and longitude, so a description of one's location is useful. While many ambulance services have paid staff, there are still a number of volunteer services in the state. Serious emergencies may be transported to EMMC or CMMC by Lifeflight of Maine, which has bases in Bangor and in Lewiston. . All of the hospitals below have websites that help one navigate their care systems. Please also consider notifying your cruise chairs of any event that requires medical assistance, since we may be aware of medical resources within the fleet.

The following hospitals are in the area:

Eastern Maine Medical Center EMMC, Bangor	207-973-7000
Central Maine Medical Center CMMC, Lewiston	207-795-0111
DownEast Community Hospital, Machias	207-255-3356
Maine Coast Memorial Hospital, Ellsworth	207-664-5311
Blue Hill Memorial Hospital, Blue Hill	207-374-3400
Waldo County General Hospital, Belfast	207-338-2500
Penobscot Bay Medical Center, Rockport	207-596-8000
Miles Memorial Hospital, Damariscotta	207-563-1234
St. Andrews Hospital, Boothbay	207-633-2121

Mid-Coast Hospital, Brunswick	207-729-0181
ParkView Hospital, Brunswick	207-373-2000
Maine Medical Center MMC, Portland	207-662-0111
Mercy Hospital, Portland	207-879-3000

PenBay Medical Center is the nearest hospital to Rockland, about four miles north. Coastal Medical Clinic is an independent walk-in clinic run by a family nurse practitioner located at 32 Birch St. in Rockland (207-593-7925) with hours 10-5 Monday through Thursday and 10-2 Friday.

Many local medical centers are associated with a nearby hospital. Bucksport Family Medicine (207-469-6880), Castine Community Health Services (207-326-4349), and Deer Isle Island Family Medicine (207-367-2311) are all affiliated with Blue Hill Hospital. Castine's clinic is open weekdays 8-4 with on-call providers weekends usually providing service at Blue Hill Hospital.

Southwest Harbor has two clinics. The Southwest Harbor Medical Center on 45 Herrick Rd. is affiliated with Maine Coast Memorial Hospital in Ellsworth. It is open Monday through Friday 8-5 and has 3 doctors and a family nurse practitioner on staff with one on call after hours. There are limited x-ray facilities and lab. (207-244-5513). The Community Health Center at 9 Village Green Way is affiliated with the Mount Desert Island Hospital with three doctors and two PAs on staff. It also has x-ray and lab facilities. Hours are weekdays 8-5 (207-244-5630). Appointments are recommended at both, although emergency care is provided.

The Arnold Memorial Medical Center in Jonesport has a recording after-hours that provides the contact for on-call coverage (207-497-5614). This center is a family practice center with x-ray and lab facilities. Patients needing further care are usually transported to Machias, a 20 minute trip by locally based Moosabec Ambulance. The medical center is about 3 miles from the Coast Guard station at 70 Snare Creek Lane, which is off Rte. 187 north of West Jonesport.

Other Downeast medical centers include Gouldsboro's Eleanor Widener Dixon Memorial Clinic just off Route 186 at 37 Clinic Road, west of Gouldsboro (207-963-4066); affiliated with Maine Coast Memorial in Ellsworth. Harrington's Family Health Center on Route 1 (207-483-4144); and the Milbridge Medical Center, South School St. (207-546-2391), affiliated with Downeast Hospital in Machias.

## **MAINE DEPARTMENT OF MARINE RESOURCES INFORMATION ON RED TIDE**

The State of Maine's Department of Marine Resources monitors marine shellfish for Red tide/ paralytic shellfish poisoning. Areas closed to the harvesting of shellfish due to red tide or to pollution are shown on the website: [[www.maine.gov/dmr](http://www.maine.gov/dmr)]. The right side menu shows Health & Safety, and a click will show the closures in effect. One can also call the DMR hotline: 1-800-232-4733 or 207-624-7727 for recorded information. More detailed information is available through the DMR offices in Division I (NH to the western boarder of the St. George River) 207-633-9595 and Division II (Eastern St. George River to the Canadian border) 207-667-3373. *Please note that red tide alerts are no longer provided in NOAA weather broadcasts.*

The disease is the result of a dinoflagellate that is red-brown in color, which concentrates in muscles, clams and scallops (mollusks) in cooler waters. The CDC includes crab and lobster in its discussion, but the DMR has not included crustacea in its advisories. Following ingestion, symptoms may appear in as little as 15 minutes to 10 hours, although usually within 2 hours.



Generally the symptoms are mild, and begin with numbness and tingling of the face, arms and legs. This may be followed by headache, dizziness, nausea and loss of muscular coordination. In severe cases, muscle paralysis and respiratory failure occur.

## Boat Towing & Assistance

### **SEA TOW**

Has a facility in Portland with services into the midcoast area, and can be reached through 207-772-6724 or Ch.annel16. There is also an automated radio check service in this area over channels 24 to 28.

### **TowBoat US**

Provides service in the Portland area through Maine Towing & Salvage, 207-200-8692 and in the East Boothbay area through Ocean Point Marina, 207-633-0773., which reports it has assisted as far east as Rockland. Service is also provided from Devereaux's yard in Penobscot by Bill Stevenson 207-460-5866. Channel 16 and 9 are monitored.

### **CHARLIE'S MARINE SERVICES**

Is based in Rockland at Beggar's Wharf. : 207-691-3483. Charlie Weidman will provide paperwork for a boat owner to request reimbursement from SeaTow, or if desired TowBoat US. Work requiring diving can also be arranged.

### **PENBAY MARINE SERVICES**

Tony Fitch, son-in-law of CCA member Brad Willauer, is also based in Rockland 207-462-7811 (cell). Tony is an experienced captain, sailor and diver and is involved in a variety of business enterprises. He may be joining *Breezing Up* sometime during the cruise.

# The Maine Cruise Flag



The addition of an appropriately curved blue stripe has made this State of Maine Marine Flag into the CCA's 2013 Maine cruise flag. We hope you will enjoy flying it at your starboard spreader during the cruise.

## FLAG'S HISTORY

In 1939 the State of Maine's 89th Legislature adopted a design for a merchant and marine flag created by Marshall S. Campbell of Waterville. Maine's Governor Barrows presented the new flag to Commodore Donald MacMillan and his crew just before they sailed for the Arctic in 1939.



Maine entered the Union on March 15, 1820 and the Legislature held its first session. The motto, *Dirigo*, was adopted during this session. *Dirigo*, meaning "I lead" is the State of Maine's motto. It alludes to the idea that just as a star guides a sailor home from his seagoing adventures, the State guides its citizens toward the loftiest patriotism.

Peg Brandon uncovered Bowdoin's 1939 Maine Marine Flag while researching the schooner's service on the Greenland Patrol during WWII (CCA members Stu Hotchkiss and Pie Truesdale were members of

the wartime crew). Only one other state has an official marine flag and we are proud to incorporate a bit of blue onto the *Dirigo* flag to make it the CCA cruise flag.

## MACMILLAN'S & SCHOONER BOWDOIN'S HISTORY

Donald Baxter MacMillan (Nov. 10, 1874 - Sept. 7, 1970) was an American explorer, sailor, researcher and lecturer who made over 30 expeditions to the Arctic during his 46-year career. He pioneered the use of radios, airplanes, and electricity in the Arctic, brought back films and thousands of photographs of Arctic scenes, and put together a dictionary of the Inuktitut language.

After serving in the Navy during World War I, MacMillan began raising money for another Arctic expedition. In 1921, the schooner *Bowdoin* -- named for MacMillan's alma mater -- was launched from East Boothbay, Maine and set sail for Baffin Island, where MacMillan and his crew spent the winter.

Following the war, MacMillan continued his trips to the Arctic, taking researchers north and carrying supplies for the MacMillan-Moravian School he established in 1929. He made his final trip to the Arctic in 1957 at age 82, and lived until 1970. MacMillan is buried in Provincetown, MA.



# Digital Selective Calling Tutorial

## INTRODUCTION

This paper describes in general terms how to set up and use Digital Selective Calling in your DSC capable VHF radio. You can start using many of these calls by just entering a MMSI (Maritime Mobile Service Identity) into your radio but to use this marvelous capability to its fullest extent you should also connect your radio to a GPS. The terms used in each radio owner's manual vary slightly so this paper is generic because of the minor differences. The common thread is that most of the procedures are easy to understand by reading the VHF/DSC Radio Guide and/or Owner's Manual and following the prompts on your radio. Prompts will lead you through each type of call, once you understand the terms included below. The biggest Lesson Learned when trying these procedures has been to have reading glasses handy and not to rush through any step.

## MMSI ENTRY

DSC (Digital Selective Calling) will not work in your VHF radio until you have entered a Station Identity/MMSI into it. Before you can send or receive DSC messages, including Distress Calls, you must enter the MMSI following the Owner's Instruction Manual for your specific model of VHF.

Each boat's nine digit MMSI comes from either:

1. FCC issued Ship Radio Station Authorization (Ship Station License)
2. Boat US at [www.boatus.com/mmsi](http://www.boatus.com/mmsi)
3. Sea Tow at [www.seatow.com/boating\\_safety/mmsi/mmsiRegister.asp](http://www.seatow.com/boating_safety/mmsi/mmsiRegister.asp)
4. US Power Squadron at [www.usps.org/php/mmsi/home.php](http://www.usps.org/php/mmsi/home.php)

Only one MMSI should be used by each vessel. The same MMSI should be used for all VHF radios on that vessel.

## CONNECTING GPS TO DSC/VHF RADIO

Following the Owner's/Instruction Manuals for both pieces of equipment find their "NMEA In" and the "NMEA Out" wires and join the GPS "Out" to the VHF "In" and the GPS "In" to the VHF "Out" wires using a plug or adaptor recommended by the radio manual, crimped wire butt connectors, solder connections or a small Terminal Strip (NOTE: wire colors may not match). Check the "Setup" menus of both pieces of equipment to be sure that they are both on a compatible setting. When you see position data (Lat/Long) displayed on the VHF you have correctly connected the wires and have a working DSC capability 😊

## PROGRAMMING ADDRESS IDs

Many VHF radios will hold up to 100 Individual and Group IDs (MMSIs). MMSIs of all boats and groups that you will talk to (on a cruise, e.g.) should be pre-programmed into your radio's Directory. Some radios offer the option of manually entering MMSIs before each call.

## TESTING DSC

Display of GPS position (Lat/Long) on a VHF/DSC Radio indicates the GPS and radio are properly installed. Class D DSC radios purchased after 2011 have a Test Call capability that will trigger a response from Rescue 21 stations within range. Test Calls to the identity 003669999 should be limited to once a week. Other DSC tests should be made using an Individual DSC Call to another DSC-equipped radio.



## INDIVIDUAL DSC CALL (SEND)

You can 'discreetly' call another boat or station and shift their VHF radio to any working channel that you choose, without first calling them on Ch-16 or 9. Each radio varies slightly on how this is done so you must consult your manual on how to do this. Basically, you will select 'Individual Call', 'Address', and 'Intership Channel' from your DSC Menu by following the prompts on your radio's LCD Screen. Once the radio is 'Ready' you will be prompted to send the call and then be notified when the transmission is complete. When the receiving station acknowledges receipt of the call both radios will automatically shift to the Intership Channel that you have selected. This shift is normally accompanied by a beep. You can then talk to the boat or station you have called following normal R/T procedures. After the call you simply shift your radio back to whatever channel you normally listen to (Ch-16).

## INDIVIDUAL ACKNOWLEDGEMENT

Acknowledgements can be pre-programmed to happen automatically or manually. In the Manual Mode the receiving boat or station must select and send back an "Able to Comply" transmission before both radios automatically shift to the Intership Channel chosen by the caller. In the Automatic Mode this transmission is sent when the receiving unit turns off the alarm/beep that alerts them to each incoming call. Prompts on the receiving radio will normally tell you how to do this and must be carefully followed.

## POSITION REQUESTS

When you want to send your own position and request the position of a specific boat or station listed in your directory you select 'Position Request' and 'Address' from the DSC Menu on your radio and follow the prompts to transmit the request. Once the request is transmitted an acknowledgement from the receiving boat will include their position. Follow your radio's prompts to read their position. Some plotters will automatically display this position on their chart. No acknowledgement means that the receiving boat is not in your communication area or that it chose to ignore your request.

## POLLING REQUESTS

When you want to know if a specific boat is in your communication area you can find out by sending a 'Polling Request'. Select Polling Request and the boat's Address from your DSC Menu and follow the prompts to transmit the request. Once the request is transmitted an acknowledgement from the receiving boat will include their position. Some plotters will automatically display this position on their chart. No acknowledgement means that the receiving boat is not in your communication area or that it chose to ignore your request.

## ACKNOWLEDGEMENT OF POSITION AND POLLING REQUESTS

When you receive a request from another boat or station your radio will beep and show you the type of request, who sent it and how to reply or ignore the request. If you initiated the request the return call will also cause your radio to beep and show you who responded, then prompt you on how to display the position received.

## GROUP CALL

Group Calls are used to transmit messages/announcements to a specific group only. Both the calling boat and the receiving boat must have the Group MMSI in their radios. The receiving boats all receive a VHF beep and must acknowledge the call similar to the way they acknowledge an Individual call before their radios will shift to the Intership channel selected by the caller. There is also an option to ignore the call.

*Always follow the prompts when you hear a beep, ringing, or an alarm sound.*

## **WARNING REMINDER**

Care should be used not to transmit an "All Ships Call" (routine, safety or urgency) or a "Distress Call" while using the non-emergency features of Digital Selective Calling. Doing so will bring immediate response from USCG. If you inadvertently transmit one of these calls you should immediately turn it off and cancel it by voice on VHF Ch 16 on High Power.

## **DISTRESS CALLS**

Distress calls are made only when the Master or Captain determines that the boat or a person is in distress and requires immediate assistance. Distress Calls are made by pressing the Distress/Red button for 5 seconds. Detailed information about the nature of a distress can be selected before sending the Distress Call, if you have time, by following the prompts on your radio before pressing the button.

## **ALL SHIPS CALLS**

All Ship Calls allow contact to be established with other vessels in your communications area without having their ID in your DSC Calling Directory. They are classified ROUTINE, SAFETY or URGENCY. URGENCY calls are similar to PAN PAN Calls and are given when a vessel may not be truly in distress but has a problem that may lead to a distress situation requiring assistance. SAFETY CALLS are similar to SECURITY Calls and are given when safety information needs to be transmitted to other vessels. When another vessel transmits an Urgency or Safety Call your radio should sound an emergency alarm and prompt you to VHF Ch 16 for the voice announcement.

## **IMPORTANT SAFETY NOTE**

DSC Distress Calls notify boats and stations in the immediate area in real time that you require assistance. A 406 EPIRB can take up to two hours to notify Rescue Centers ashore that you require assistance. DSC Distress calls give your exact position while an EPIRB gives tracking stations info to calculate your position within two miles. The locating beacon on an EPIRB requires a direction finder to locate you within that two mile circle. 406 GPIRBs (an EPIRB with a built in GPS) will reduce the time and give the Rescue Control Center an exact position which can be relayed to vessels in your area but this also takes time. The best combination appears to be to have your DSC VHF plus a 406 GPIRB for offshore rescues. For inshore/near shore rescue it is hard to find anything better than a DSC VHF equipped radio, and the price is minor.

Updated as a handout for *Safety for Cruising Couples Seminar* hosted by  
CCA and RSYC on 2 March 2013

QUESTIONS about, or CHANGES to this paper should be sent to [rontrossbach@msn.com](mailto:rontrossbach@msn.com)

# Transportation Options

## Air Travel to Maine

**Boston's Logan airport (BOS)** remains a gateway to the northeast with major carriers offering nonstop service from distant cities, such as LAX. American, JetBlue, United, Delta, Southwest & Airtran are just a few of the carriers. JetBlue's terminal C shares a home with **CapeAir**, which serves Rockland.

**Knox County Airport** is based in Owls Head near Rockland (**RKD**). [[www.knoxcountymaine.gov](http://www.knoxcountymaine.gov)] Cape Air also provides service to and from Hancock County's Trenton airport (**BHB**) near Mt. Desert Island [[www.bhbairport.com](http://www.bhbairport.com)]. Boston to Rockland by air is approximately \$89.00 or \$169 for refundable fare. In the summer PenAir also provides service to Mt. Desert. Prices will be slightly higher for the greater distance.

**Manchester, NH (MHT)** also offers service to the northeast from many parts of the country.

**Portland, Maine (PWM)** has air service provided by United (through Newark - EWR), JetBlue (through New York's JFK), AirTran, Delta and US Airways. For information on the flight schedules and airlines available visit [[www.portlandjetport.org](http://www.portlandjetport.org)]. The website allows some tracking of flights, which provides an idea of the options available.

**Bangor, Maine (BGR)** has Delta flying with connections to New York - LGA, and Detroit - DTW, and US Airways flying with connections in Philadelphia - PHL and Washington - DCA. Visit [[www.flybangor.com](http://www.flybangor.com)] for an idea of what this airport offers.

## Land Travel Within Maine

### CAR RENTAL

**The Rockland area** has two car rental agencies. Nearby Thomaston has an Enterprise office which can provide car rentals; unfortunately its website does not currently accept one-way rentals from other locations, although a call to the local agent at 207-594-9093 indicated cars can be accepted. Enterprise will pick-up and drop off customers during business hours.

**Knox County Airport RKD** has a Budget car rental location that will rent cars and also accept cars from other locations. (207-594-0822). Budget operates strictly at the airport, requiring local taxi service.

**The Trenton / Bar Harbor BHB airport** has Hertz and Enterprise car rentals available.

### TAXI

**Schooner Bay Taxi & Limo** (207-594-5000) is known to provide airport limo service from Logan airport. The estimated time is 4 hours, and advance notice may allow grouping of customers. [[www.schoonerbaytaxi.com](http://www.schoonerbaytaxi.com)]

Other providers in the Rockland area are:

**Needful Things & Services** (207-593-7402) Also offers vans with more seating capacity. [[www.needfulthingsandservices.com](http://www.needfulthingsandservices.com)]

**All Aboard Trolley & Limousine** (207-594-9300) [[www.meetthefleet.com](http://www.meetthefleet.com)]

**Joe's Taxi** (207-975-3560) [[www.Joes-taxi-rockland.com](http://www.Joes-taxi-rockland.com)]

### Bus

**Concord Trailways** offers transportation from Boston's Logan Airport via Maine's coastal route. [[www.concordcoachlines.com](http://www.concordcoachlines.com)]

The bus currently departs Boston at 11:35 AM and arrives in Rockland 16:15. In the summer the Concord schedule may include additional scheduled service.

The approximate driving distances:

Boston to Rockland – 185 miles  
Manchester to Rockland – 178 miles  
Portland to Rockland – 85 miles  
Bangor to Rockland – 70 miles

As always, the economies of driving depend upon the number of passengers, time and comfort. Those who car-pool in a van or use the larger vehicles of Schooner Bay may find these to be less expensive options.



# Participants by Name

LAST NAME	FIRST NAME	STATION	BOAT
Adams	Mark	guest	DEFIANCE
Allardyce	Fred	ESS	DUET
Allardyce	Bobbie		DUET
Anderson	Chace	guest	WINDAWAY
Anderson	Josie		WINDAWAY
Antrim	Jim	SFA	BAY LEAF
Antrim	Cheryl		BAY LEAF
Barnard	Stephen	SOC	VICTORY CHIMES
Barnard	Barbara		VICTORY CHIMES
Barsz	Bill	SOC	VICTORY CHIMES
Barsz	Jeri		VICTORY CHIMES
Batchelder	Steve		WASSAIL
Batchelder	Jane		WASSAIL
Baylis	Liz	SFA	BAY LEAF
Beebe	Rob	GLS	ACORN
Beebe	Kate		ACORN
Bent	Peter	BOS	SALMAGAL
Bent	Sarah		SALMAGAL
Berriman	Rex	BOS/BUZ	TIGER MOTH
Berriman	Jane		TIGER MOTH
Beven	Fin	SOC	EXCELLENCE
Beveridge	Frank	BOS/BUZ	TREKKIN
Beveridge	Heather		TREKKIN
Biemesderfer	Dan	ESS	SHEARWATER
Biemesderfer	Gretchen		SHEARWATER
Born	Rick	CHE	DRAGON
Born	Elaine		DRAGON
Brown	Nick	BOS/BUZ	MARGARITA
Brown	David	BOS/BUZ	SELKIE
Brown	Jim	SOC guest	VICTORY CHIMES
Brown	Joyce	SOC guest	VICTORY CHIMES
Burke	William		FANCY
Campbell	Sam		REINDEER
Campbell	Rebecca Gardner		REINDEER
Casner	Truman	FLA	ASTRAL
Casner	Cinnie		ASTRAL
Casner	Anne		ASTRAL
Chalmers	Heather		SOJOURNER
Chambers	Jim	FLA	SEA SHANTY
Chambers	Sue		SEA SHANTY
Chandler	Peter	BOS/GMP	LORD GEORGE
Chandler	Liza		LORD GEORGE
Clucas	Ted	CHE	MANXMAN
Clucas	Anne		MANXMAN
Cole	Brad		CYGNET
Connor	Paul	ESS	LILLY

LAST NAME	FIRST NAME	STATION	BOAT
Connor	Carol		LILLY
Cook	Bill	BOS/BUZ	RESOLUTION
Cook	Bill	SOC	VICTORY CHIMES
Cook	Juli		VICTORY CHIMES
Crump	Bev	CHE	CHESSIE
Crump	Susan		CHESSIE
Danciger	Agnes	FLA	VICTORY CHIMES
de Zwart	Pieter	ESS	MARGARITA
de Zwart	Joanna Miller		MARGARITA
Deupree	Jesse	BOS/GMP	SORN
Di Renzo	Gigi		BOLERO
DiPietro	Henry	SOC guest	VICTORY CHIMES
Dockery	Joe	FLA	WHITEHAWK
Dockery	Kristal		WHITEHAWK
Dorman	Jonathan		FANCY
Dossett	Andrew	SOC	CORMORANT
Dossett	Corky		CORMORANT
Drew	Mindy	ESS	SHAMROCK
Drew	Robert	ESS	SHAMROCK
Driscoll	Peter	BOS/GMP	REINDEER
Driscoll	Anne		REINDEER
du Moulin	Rich	NYS	MINERVA
du Moulin	Ann		MINERVA
Dyer	Dan	BOS/BUZ	RABBIT
Dyer	Mimi		RABBIT
Eddy	Jim	SOC	VICTORY CHIMES
Eddy	Janet		VICTORY CHIMES
Eddy	James	SOC	VICTORY CHIMES
Eddy	Lisa		VICTORY CHIMES
Eddy	Park	SOC	VICTORY CHIMES
Eddy	Linda		VICTORY CHIMES
Eddy	Clara		VICTORY CHIMES
Eddy	Hunter		VICTORY CHIMES
English	Arthur	GLS	TEMAGAMI
English	Barbara		TEMAGAMI
English	Bob	FLA	JET STREAM
English	Deb		JET STREAM
Fasciano	Casey		BOLERO
Fontanella	Joe	NYS	WHITEHAWK
Fontanella	Tish		WHITEHAWK
Frost	Rosie		NAMHARA
Garnier	Al	SOC	VICTORY CHIMES
Garnier	JoLinda		VICTORY CHIMES
Garnier	Janet	SOC guest	VICTORY CHIMES
Gebow	Greg	BOS/GMP	UNDINE
Gebow	Debby		UNDINE
Gray	Sam	BOS/BUZ	CLARION
Gray	Gerry		CLARION
Greene	Rowell	SOC guest	VICTORY CHIMES

LAST NAME	FIRST NAME	STATION	BOAT
Greene	Mary Lee "Pinky"		VICTORY CHIMES
Griffin	Mary		DEFIANCE
Hall	Larry	BOS/BUZ	GUNSMOKE
Hamilton	Ernest	BOS	GLOOSCAP II
Hamilton	Paul	ESS	ENTROPY
Hard	Fred		SEAWEED
Hard	Lorna		SEAWEED
Harvie	Jim	BOS/GMP	MADRIGAL
Harvie	Ruth		MADRIGAL
Hedin	Todd	SFA	BAY LEAF
Hellstrom	Erik		UNDINE
Hill	Mike	GLS	ZORA
Hill	Donna		ZORA
Holliday	Dick	ESS	EVERBREEZE
Holliday	Ardis		EVERBREEZE
Honey	Tamisia		MERIDIAN
Hord	Bill	CHE	SEADLER
Hord	Lilly		SEADLER
Hosack	Fred	FLA	CIRCE
Hosack	Darlene		CIRCE
Howland	Kin	BOS/BUZ	RESOLUTION
Huff	Bill	SOC guest	VICTORY CHIMES
Hungate	Harry	SOC	CORMORANT
Hutchison	Jack	SOC	VICTORY CHIMES
Hutchison	Susan		VICTORY CHIMES
Jones	Jo Thomsett		TEMAGAMI
Jones	Andy	GLS	TEMAGAMI
Jones	Bart	BOS	ANANDA
Jones	Gil	SOC	VICTORY CHIMES
Jones	Julie		VICTORY CHIMES
Jorch	Bill	NYS	FROLIC
Jorch	Nancy		FROLIC
Jorgensen	Walter	SOC	VICTORY CHIMES
Jorgensen	Dixie		VICTORY CHIMES
Kane	Edward	BOS	BOLERO
Keegin	Stafford	SFA	BAY LEAF
Keene	Henry	BOS/BUZ	ALIDA
Keene	Andreas		GENERAL KNOX
Keene Jr.	Hank	BOS/BUZ	GENERAL KNOX
Kempe	RC Stephen W.	BDA	SEAWEED
Kempe	Jill		SEAWEED
Kiley	Rob	BOS	MERIDIAN
Kitchen	Jerry		ALLIANCE
Kitchen	Diana		ALLIANCE
Kok	Frans	CHE	REMEDIOS
Laing	Lisa		LILLY
Langston	Roger	BOS	CALYPSO
Langston	Jennifer		CALYPSO
Langston	Charles	BOS/BUZ	CALYPSO



LAST NAME	FIRST NAME	STATION	BOAT
Langston	Leeanne		CALYPSO
Lawrence	Richard	SOC	VICTORY CHIMES
Lawrence	Jay		VICTORY CHIMES
Lhamon	Tad	PNW	OUTRAGEOUS
Lhamon	Joyce	PNW	OUTRAGEOUS
Lindsay	Andy	BOS	SORN
Lloyd	Robin		REINDEER
Lloyd	Tamara		REINDEER
Lothrop	Jane		CORMORANT
Maarse	Carla		VICTORY CHIMES
MacNaught	Malcolm	BOS	SOMERLED
MacNaught	Luli		SOMERLED
MacNeil	Bruce	BOSGMP	LUMINA
MacNeil	Linda		LUMINA
Martin	Dottie		ANANDA
McCurdy	Sheila	NYS	SELKIE
McCurdy	Guest		SELKIE
McDonough	Joe	BOS/BUZ	SCAMPER
McDonough	Holly		SCAMPER
McKelvy	Nancy	BOS	RESOLUTION
McKenna	Dick	SOC guest	VICTORY CHIMES
McKenna	Susan	SOC guest	VICTORY CHIMES
McLucas	Don	BOS	CLARION
McLucas	Barb		CLARION
McPheeters	Peter	BOS/GMP	SORN
Medland	Bob	GLS	ZORA
Medland	Sally		ZORA
Melchner	John	CHE	REMEDIOS
Melchner	Carol		REMEDIOS
Meslang	Maureen	PNW	ROCKET J. SQUIRREL
Meslang	Rick		ROCKET J. SQUIRREL
Modisette	Ruth	SOC	CATHERINE MINOT
Morgan	Jim	SOC	VICTORY CHIMES
Morgan	Jill		VICTORY CHIMES
Munro	Bruce	SFA	ALLIANCE
Munro	Lynne		ALLIANCE
Myer	Jean	BOS	SOJOURNER
Nakajima	Hiro	NYS	HIRO MARU
Nakajima	Yuko		HIRO MARU
Noble	Mark		GUNSMOKE
Noonan	Peter	SAF	DEFIANCE
Noonan	Peggy		DEFIANCE
Norum	Deborah		EXCELLENCE
O'Donnell	Kathleen		ASTRAL
O'Flaherty	Michael	BOS	NAMHARA
Orem	Nick	BOS	WASSAIL
Orem	Phyllis		WASSAIL
Otorowski	Chris	PNW	ROCKET J. SQUIRREL
Otorowski	Shawn		ROCKET J. SQUIRREL

LAST NAME	FIRST NAME	STATION	BOAT
Parker	Tony	CHE	REINDEER
Parker	Claire		REINDEER
Perry	Holly		ALIDA
Phyfe	Jim	BOS/BUZ	ANDARA
Phyfe	Braden		ANDARA
Phyfe	Abby		ANDARA
Phyfe III	James	BOS/BUZ	ANDARA
Powers	Dennis	ESS	QUEST
Powers	Joel		QUEST
Rae	Allan	BOS	EVENING STAR
Rae	Cathy		EVENING STAR
Ragan	Barbara		SEEADLER
Read	Bill	CHE	SEEADLER
Roberts	Henry	BOS/BUZ	MASCOTTE
Roberts	Cathy		MASCOTTE
Robfogel	Marjorie	CHE	PING
Robfogel	Jim		PING
Rosbe	Bob	BOS/BUZ	CLARION
Rosbe	Judy		CLARION
Rose	Tanner	FLA	GLIDE
Rose	Ross		GLIDE
Rowland	Ned	BOS	NAMHARA
Rowland	Susie		NAMHARA
Rubadeau	Robert	BOS	DOG STAR
Rubadeau	Mary		DOG STAR
Rugg	Dan	CHE	CYGNET
Sanders	Ric	SOC	VICTORY CHIMES
Sanders	Monika		VICTORY CHIMES
Santy	Ross	BOS/GMP	OUTRAGEOUS
Santy	Lucia		OUTRAGEOUS
Schlegel	Donna	CHE	OSCAR
Schlegel	Alex		OSCAR
Schneider	Garry	BOS/GMP	RISING WIND
Schneider	Leslie		RISING WIND
Schoettle	Mike	SOC guest	VICTORY CHIMES
Shirley	Mary		REMEDIOS
Silver	Ted		KATAHDIN
Silver	Sandie		KATAHDIN
Simonsen	Tove		SOJOURNER
Sinnickson	Drew	CHE	WEETAMOE
Sinnickson	Sarah		WEETAMOE
Smith	Owen	NYS	GLIDE
Smith	Chris		GLIDE
Smullen	Brian	BOS	NAMHARA
Somers	Larry	SOC	LILLY
Starke	Charles	NYS	SOJOURNER
Stoops	Peter	BOS/GMP	FREEDOM
Storck	John	NYS	REINDEER
Storck	Colette		REINDEER

LAST NAME	FIRST NAME	STATION	BOAT
Stubbs	Michael	NYS	FANCY
Stubbs	Veronica		FANCY
Swan	Henry	BOS/BUZ	JUST RIGHT
Swan	Judy		JUST RIGHT
Swan	Meredith		RESOLUTION
Taylor	Steve	BOS/BUZ	MERIDIAN
Tobey	Chase		BREEZING UP
Tobey	Wyeth		BREEZING UP
Tompkins	Holly		CYGNET
Torgerson	Bill	CHE	DRAGON
Torgerson	Maureen		DRAGON
Treanor	John	BOS	WIKI WIKI
Treanor	Mary		WIKI WIKI
Trossbach	Ron	CHE	SUNNESHINE
Trossbach	Kathy		SUNNESHINE
Underdown	Peter		NAMHARA
Utle	Dave	PNW	MORNING STAR
Utle	Mary		MORNING STAR
Vaughan	Robert	SOC	FANCY
Wallace	Martha		BOLERO
Walsh	Bill		GUNSMOKE
Warden	Bill	CHE	CATHERINE MINOT
Warden	Mary		CATHERINE MINOT
Watts	Peter	BDO	KATAHDIN
Watts	Barbara		KATAHDIN
Weil	Bill		DUET
Weil	Nina		DUET
Weiss	Ronald	NYS	ROCINANTE
Weiss	Martha		ROCINANTE
White	Harvey	FLA	WHITE CAPS
White	Judy		WHITE CAPS
White	Tod	SOC	VICTORY CHIMES
White	Linda		VICTORY CHIMES
Wilbur	Bill	CHE	CIRCE
Wilbur	Sue		CIRCE
Wilcox	Peter		ROCINANTE
Wilcox	Maggie		ROCINANTE
Willauer	Brad	BOS/GMP	BREEZING UP
Willauer	Ann		BREEZING UP
Wills	Jack	FLA	JET STREAM
Wills	Glory		JET STREAM
Wisch	Jeff	BOS/BUZ	WISCHBONE
Wisch	Cindy Crofts		WISCHBONE
Worrell	Peter	BOS/GMP	PATIENCE
Worrell	Kareen		PATIENCE
Young	Patti		ENTROPY



# Participants by Boat

BOAT NAME	TYPE	CREW NAMES		STATION
ACORN	1968 Bermuda 40	Rob	Beebe	GLS
ACORN		Kate	Beebe	
ALIDA	1994 Zimmerman 36 P	Henry	Keene	BOS/BUZ
ALIDA		Holly	Perry	
ALLIANCE	Hylas 44 - charter	Bruce	Munro	SFA
ALLIANCE		Lynne	Munro	
ALLIANCE		Jerry	Kitchen	
ALLIANCE		Diana	Kitchen	
ANANDA	1978 Cherubini 44	Bart	Jones	BOS
ANANDA		Dottie	Martin	
ANDARA	1975 Contessa 35	James	Phyfe III	BOS/BUZ
ANDARA		Abby	Phyfe	
ANDARA		Jim	Phyfe	BOS/BUZ
ANDARA		Braden	Phyfe	
ASTRAL	1958 Block Island 40	Truman	Casner	FLA
ASTRAL		Cinnie	Casner	
ASTRAL		Anne	Casner	
ASTRAL		Kathleen	O'Donnell	
BAY LEAF	1967 Hinckley 41	Stafford	Keegin	SFA
BAY LEAF		Todd	Hedin	SFA
BAY LEAF		Jim	Antrim	SFA
BAY LEAF		Cheryl	Antrim	
BAY LEAF		Liz	Baylis	SFA
BOLERO	1949 yawl 73'	Edward	Kane	BOS
BOLERO		Martha	Wallace	
BOLERO		Casey	Fasciano	
BOLERO		Gigi	Di Renzo	
BREEZING UP	2001 J-46	Brad	Willauer	BOS/GMP
BREEZING UP		Ann	Willauer	
BREEZING UP		Chase	Tobey	
BREEZING UP		Wyeth	Tobey	
CALYPSO	1996 Nicholson 40	Roger	Langston	BOS
CALYPSO		Jennifer	Langston	
CALYPSO		Charles	Langston	BOS/BUZ
CALYPSO		Leeanne	Langston	
CATHERINE MINOT	1996 L-M48 P	Bill	Warden	CHE
CATHERINE MINOT		Mary	Warden	
CATHERINE MINOT		Ruth	Modisette	SOC
CHESSIE	1991 Grand Banks 46 P	Bev	Crump	CHE
CHESSIE		Susan	Crump	
CIRCE	1973 Hinckley 49 ketch	Fred	Hosack	FLA
CIRCE		Darlene	Hosack	
CIRCE		Bill	Wilbur	CHE
CIRCE		Sue	Wilbur	
CLARION	1978 Bristol 35	Sam	Gray	BOS/BUZ
CLARION		Gerry	Gray	

BOAT NAME	TYPE	CREW NAMES		STATION
CLARION		Bob	Rosbe	BOS/BUZ
CLARION		Judy	Rosbe	
CLARION		Don	McLucas	BOS
CLARION		Barb	McLucas	
CORMORANT	1983 Corbin 39 cutter	Harry	Hungate	SOC
CORMORANT		Jane	Lothrop	
CORMORANT		Andrew	Dossett	SOC
CORMORANT		Corky	Dossett	
CYGNET	Charter ketch 39'	Dan	Rugg	CHE
CYGNET		Brad	Cole	
CYGNET		Holly	Tompkins	
DEFIANCE	2002 Swan 56	Peter	Noonan	SAF
DEFIANCE		Peggy	Noonan	
DEFIANCE		Mark	Adams	
DEFIANCE		Mary	Griffin	
DOG STAR		Robert	Rubadeau	BOS
DOG STAR		Mary	Rubadeau	
DRAGON	1993 Litle Harbor 52	Bill	Torgerson	CHE
DRAGON		Maureen	Torgerson	
DRAGON		Rick	Born	CHE
DRAGON		Elaine	Born	
DUET	2003 East Bay 49 P	Fred	Allardyce	ESS
DUET		Bobbie	Allardyce	
DUET		Bill	Weil	
DUET		Nina	Weil	
ENTROPY	1997 Tripp 41	Paul	Hamilton	ESS
ENTROPY		Patti	Young	
EVENING STAR	1990 Bayliner 45 P	Allan	Rae	BOS
EVENING STAR		Cathy	Rae	
EVERBREEZE	2003 Bradley 39 P	Dick	Holliday	ESS
EVERBREEZE		Ardis	Holliday	
EXCELLENCE	Beneteau 475 charter	Fin	Beven	SOC
EXCELLENCE		Deborah	Norum	
FANCY	1986 Sanford 51 Custom	Michael	Stubbs	NYS
FANCY		William	Burke	
FANCY		Jonathan	Dorman	
FANCY		Robert	Vaughan	SOC
FANCY		Veronica	Stubbs	
FREEDOM	1971 Swan 36	Peter	Stoops	BOS/GMP
FROLIC	1977 Albin 43 P	Bill	Jorch	NYS
FROLIC		Nancy	Jorch	
GENERAL KNOX	1984 Wilbur 34 P	Hank	Keene Jr.	BOS/BUZ
GENERAL KNOX		Andreas	Keene	
GLIDE	1998 J42	Tanner	Rose	FLA
GLIDE		Ross	Rose	
GLIDE		Owen	Smith	NYS
GLIDE		Chris	Smith	
GLOOSCAP II	1970 Tahiti II	Ernest	Hamilton	BOS
GUNSMOKE	2005 Duffy 42 P	Larry	Hall	BOS/BUZ

BOAT NAME	TYPE	CREW NAMES		STATION
GUNSMOKE		Bill	Walsh	
GUNSMOKE		Mark	Noble	
HIRO MARU	1969 Swan 43	Hiro	Nakajima	NYS
HIRO MARU		Yuko	Nakajima	
JET STREAM	2003 Wauquiez 45	Jack	Wills	FLA
JET STREAM		Glory	Wills	
JET STREAM		Bob	English	FLA
JET STREAM		Deb	English	
JUST RIGHT	1989 Grand Banks 32 P	Henry	Swan	BOS/BUZ
JUST RIGHT		Judy	Swan	
KATAHDIN	1983 Seaton-N. End 42 P	Peter	Watts	BDO
KATAHDIN		Barbara	Watts	
KATAHDIN		Ted	Silver	
KATAHDIN		Sandie	Silver	
LILLY		Larry	Somers	SOC
LILLY		Lisa	Laing	
LILLY	2000 Eastbay 43 P	Paul	Connor	ESS
LILLY		Carol	Connor	
LORD GEORGE	1978 Vineyard Vixen	Peter	Chandler	BOS/GMP
LORD GEORGE		Liza	Chandler	
LUMINA	Sabre 42 P	Bruce	MacNeil	BOSGMP
LUMINA		Linda	MacNeil	
MADRIGAL	1966 Hinckley Pilot 35	Jim	Harvie	BOS/GMP
MADRIGAL		Ruth	Harvie	
MANXMAN	1983 Philip Briand 39	Ted	Clucas	CHE
MANXMAN		Anne	Clucas	
MARGARITA	Duffy 48 P	Pieter	de Zwart	ESS
MARGARITA		Joanna Miller	de Zwart	
MARGARITA		Nick	Brown	BOS/BUZ
MASCOTTE	1998 Able 44 P	Henry	Roberts	BOS/BUZ
MASCOTTE		Cathy	Roberts	
MERIDIAN	1990 45'Concordia	Steve	Taylor	BOS/BUZ
MERIDIAN		Tamisia	Honey	
MERIDIAN		Rob	Kiley	BOS
MINERVA	2008 Zimmer 34	Rich	du Moulin	NYS
MINERVA		Ann	du Moulin	
MORNING STAR	1973 C&C Custom 48	Dave	Utle	PNW
MORNING STAR		Mary	Utle	
NAMHARA	2008 Vicem 67 P	Ned	Rowland	BOS
NAMHARA		Susie	Rowland	
NAMHARA		Brian	Smullen	BOS
NAMHARA		Michael	O'Flaherty	BOS
NAMHARA		Peter	Underdown	
NAMHARA		Rosie	Frost	
OSCAR	1988 Frers 41	Donna	Schlegel	CHE
OSCAR		Alex	Schlegel	
OUTRAGEOUS	Sabre - charter	Ross	Santy	BOS/GMP
OUTRAGEOUS		Lucia	Santy	
OUTRAGEOUS		Tad	Lhamon	PNW
OUTRAGEOUS		Joyce	Lhamon	PNW



BOAT NAME	TYPE	CREW NAMES		STATION
PATIENCE	Little Harbor 51	Peter	Worrell	BOS/GMP
PATIENCE		Kareen	Worrell	
PING	1998 Ellis Legacy 39 P	Marjorie	Robfogel	CHE
PING		Jim	Robfogel	
QUEST	1987 Cambria 40	Dennis	Powers	ESS
QUEST		Joel	Powers	
RABBIT	1968 Black Watch 37	Dan	Dyer	BOS/BUZ
RABBIT		Mimi	Dyer	
REINDEER	1998 Morris 47	Peter	Driscoll	BOS/GMP
REINDEER		Anne	Driscoll	
REINDEER		Tony	Parker	CHE
REINDEER		Claire	Parker	
REINDEER		John	Storck	NYS
REINDEER		Colette	Storck	
REINDEER		Robin	Lloyd	
REINDEER		Tamara	Lloyd	
REINDEER		Sam	Campbell	
REINDEER		Rebecca Gardner	Campbell	
REMEDIOS		Frans	Kok	CHE
REMEDIOS		Mary	Shirley	
REMEDIOS		John	Melchner	CHE
REMEDIOS		Carol	Melchner	
RESOLUTION	1986 Bristol 56	Bill	Cook	BOS/BUZ
RESOLUTION		Kin	Howland	BOS/BUZ
RESOLUTION		Nancy	McKelvy	BOS
RESOLUTION		Meredith	Swan	
RISING WIND	1980 Mason 43	Garry	Schneider	BOS/GMP
RISING WIND		Leslie	Schneider	
ROCINANTE	2009 Little Harbor 46	Ronald	Weiss	NYS
ROCINANTE		Martha	Weiss	
ROCINANTE		Peter	Wilcox	
ROCINANTE		Maggie	Wilcox	
ROCKET J. SQUIRREL		Chris	Otorowski	
ROCKET J. SQUIRREL	1978 Swan 39	Shawn	Otorowski	PNW
ROCKET J. SQUIRREL		Maureen	Meslang	
ROCKET J. SQUIRREL		Rick	Meslang	
ROCKET J. SQUIRREL				
SALMAGAL	Sabre 425	Peter	Bent	BOS
SALMAGAL		Sarah	Bent	
SCAMPER	Fleming 55 P	Joe	McDonough	BOS/BUZ
SCAMPER		Holly	McDonough	
SEA SHANTY	1985 Niagra 35	Jim	Chambers	FLA
SEA SHANTY		Sue	Chambers	
SEAWEED	2000 DeFever 44 P	RC Stephen W.	Kempe	BDA
SEAWEED		Jill	Kempe	
SEAWEED		Fred	Hard	
SEAWEED		Lorna	Hard	
SEEADLER	1990 Tartan 372	Bill	Read	CHE
SEEADLER		Barbara	Ragan	
SEEADLER		Bill	Hord	CHE
SEEADLER		Lilly	Hord	

BOAT NAME	TYPE	CREW NAMES		STATION
SELKIE	1986 McCurdy & Rhodes	Sheila	McCurdy	NYS
SELKIE		David	Brown	BOS/BUZ
SELKIE		Guest	McCurdy	
SHAMROCK	1979 Newman 36 P	Mindy	Drew	ESS
SHAMROCK		Robert	Drew	ESS
SHEARWATER	Mason 43	Dan	Biemesderfer	ESS
SHEARWATER		Gretchen	Biemesderfer	
SOJOURNER	Pearson 43 charter	Charles	Starke	NYS
SOJOURNER		Heather	Chalmers	
SOJOURNER		Jean	Myer	BOS
SOJOURNER		Tove	Simonsen	
SOMERLED	2002 EastBay 42 P	Malcolm	MacNaught	BOS
SOMERLED		Luli	MacNaught	
SORN	1999 Corsair F-31	Jesse	Deupree	BOS/GMP
SORN		Peter	McPheeters	BOS/GMP
SORN		Andy	Lindsay	BOS
SUNNESHINE	1991 Sabreline 36 P	Ron	Trossbach	CHE
SUNNESHINE		Kathy	Trossbach	
TEMAGAMI	2003 Sabre 42	Arthur	English	GLS
TEMAGAMI		Barbara	English	
TEMAGAMI		Jo Thomsett	Jones	
TEMAGAMI		Andy	Jones	GLS
TIGER MOTH	1978 Morgan 38	Rex	Berriman	BOS/BUZ
TIGER MOTH		Jane	Berriman	
TREKKIN	2003 Duffy 35 P	Frank	Beveridge	BOS/BUZ
TREKKIN		Heather	Beveridge	
UNDINE	2002 Frers 44	Greg	Gebow	BOS/GMP
UNDINE		Debby	Gebow	
UNDINE		Erik	Hellstrom	
WASSAIL	2006 Najad 440	Nick	Orem	BOS
WASSAIL		Phyllis	Orem	
WASSAIL		Steve	Batchelder	
WASSAIL		Jane	Batchelder	
WEETAMOE	1991 GrandBanks 46 P	Drew	Sinnickson	CHE
WEETAMOE		Sarah	Sinnickson	
WHITE CAPS	2006 Sabreline 42 P	Harvey	White	FLA
WHITE CAPS		Judy	White	
WHITEHAWK	1978 Bruce King design 105'	Joe	Dockery	FLA
WHITEHAWK		Kristal	Dockery	
WHITEHAWK		Joe	Fontanella	NYS
WHITEHAWK		Tish	Fontanella	
WIKI WIKI	1988 Hinckley 51	John	Treanor	BOS
WIKI WIKI		Mary	Treanor	
WINDAWAY	Crealock 40	Chace	Anderson	guest
WINDAWAY		Josie	Anderson	
WISCHBONE	2003 Oyster 53	Jeff	Wisch	BOS/BUZ
WISCHBONE		Cindy Crofts	Wisch	
ZORA	1981 Mariner 39	Bob	Medland	GLS
ZORA		Sally	Medland	
ZORA		Mike	Hill	GLS
ZORA		Donna	Hill	

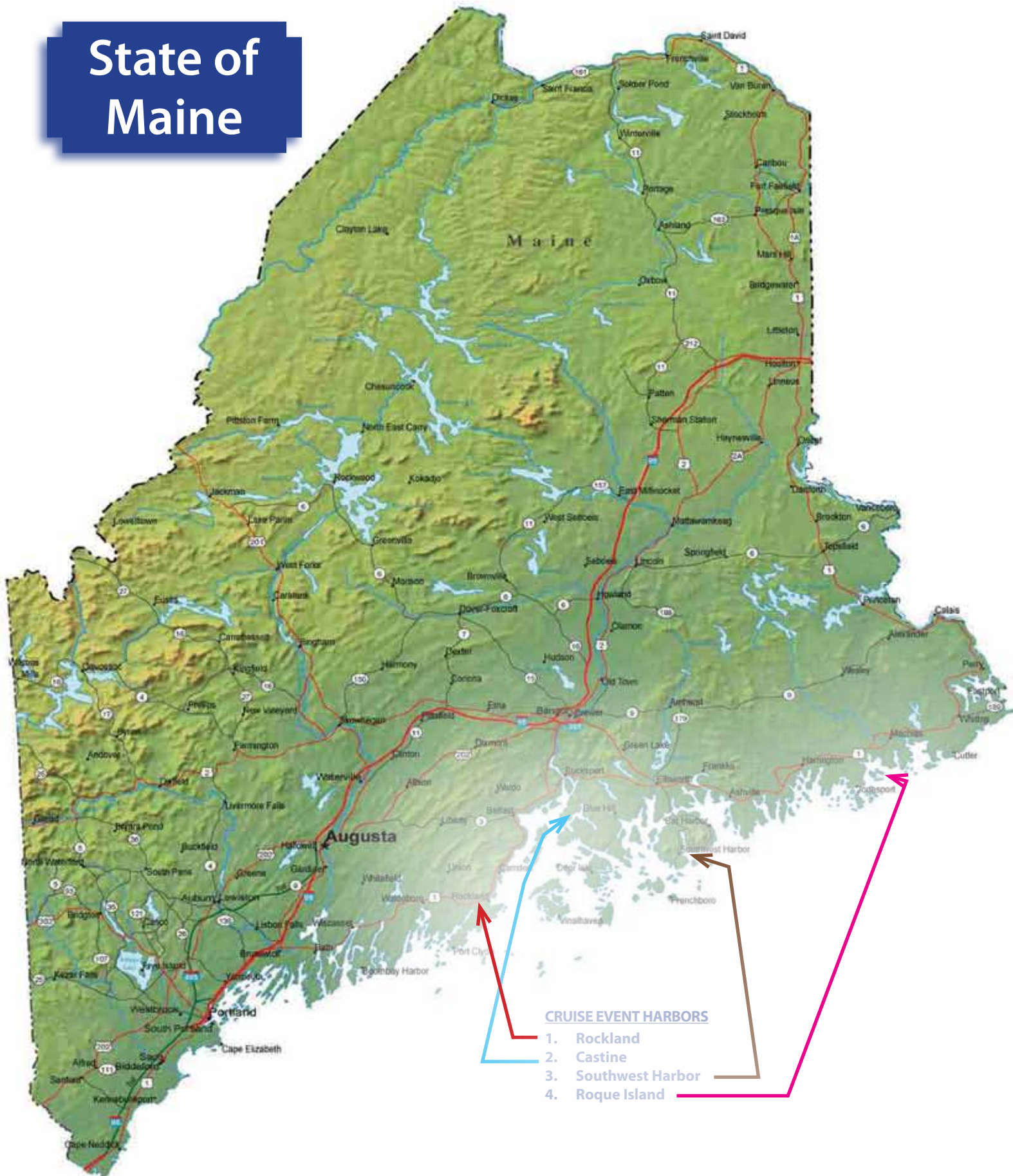
BOAT NAME	TYPE	CREW NAMES		STATION
VICTORY CHIMES	1900 170 ft. schooner	Jim	Morgan	SOC
VICTORY CHIMES		Jill	Morgan	
VICTORY CHIMES		Tod	White	SOC
VICTORY CHIMES		Linda	White	
VICTORY CHIMES		Bill	Barsz	SOC
VICTORY CHIMES		Jeri	Barsz	
VICTORY CHIMES		Bill	Cook	SOC
VICTORY CHIMES		Juli	Cook	
VICTORY CHIMES		Richard	Lawrence	SOC
VICTORY CHIMES		Jay	Lawrence	
VICTORY CHIMES		Ric	Sanders	SOC
VICTORY CHIMES		Monika	Sanders	
VICTORY CHIMES		Agnes	Danciger	FLA
VICTORY CHIMES		Carla	Maarse	
VICTORY CHIMES		Jim	Eddy	SOC
VICTORY CHIMES		Janet	Eddy	
VICTORY CHIMES		James	Eddy	SOC
VICTORY CHIMES		Lisa	Eddy	
VICTORY CHIMES		Park	Eddy	SOC
VICTORY CHIMES		Linda	Eddy	
VICTORY CHIMES		Clara	Eddy	
VICTORY CHIMES		Hunter	Eddy	
VICTORY CHIMES		Rowell	Greene	SOC guest
VICTORY CHIMES		Mary Lee "Pinky"	Greene	
VICTORY CHIMES		Dick	McKenna	SOC guest
VICTORY CHIMES		Susan	McKenna	SOC guest
VICTORY CHIMES		Mike	Schoettle	SOC guest
VICTORY CHIMES		Bill	Huff	SOC guest
VICTORY CHIMES		Jim	Brown	SOC guest
VICTORY CHIMES		Joyce	Brown	SOC guest
VICTORY CHIMES		Al	Garnier	SOC
VICTORY CHIMES		JoLinda	Garnier	
VICTORY CHIMES		Janet	Garnier	SOC guest
VICTORY CHIMES		Henry	DiPietro	SOC guest
VICTORY CHIMES		Jack	Hutchison	SOC
VICTORY CHIMES		Susan	Hutchison	
VICTORY CHIMES		Walter	Jorgensen	SOC
VICTORY CHIMES		Dixie	Jorgensen	
VICTORY CHIMES		Gil	Jones	SOC
VICTORY CHIMES		Julie	Jones	
VICTORY CHIMES		Stephen	Barnard	SOC
VICTORY CHIMES		Barbara	Barnard	

## NOTES

[illegible]



# State of Maine



## CRUISE EVENT HARBORS

1. Rockland
2. Castine
3. Southwest Harbor
4. Roque Island