

THE CRUISING CLUB OF AMERICA

NATIONAL WINTER CRUISE IN THE GRENADINES

MARCH 13 – 20, 2004



TABLE OF CONTENTS

Cruise Itinerary	2
General Information	3
Dress Code	
Rafting	
Communications	
Navigation	
Yacht Storage in Grenada	
Cruise Committee and Event Coordinators	4
Event Information	
Saturday, March 13 -- Canouan	5
Sunday -- Lay Day	5
Monday -- Bequia	7
Ideas for Exploring Bequia	10
Tuesday -- Lay Day	12
Wednesday -- Carriacou	12
Thursday -- Race to Grenada	12
Friday -- Grenada	17
Saturday -- Grenada	17
Participating CCA Members, Spouses, Family, and Guests	19
Facts About The Islands We Are Visiting	21

CRUISE ITINERARY

- Saturday* Cruise participants arrive in Canouan by boat or airplane. Commence charters from The Moorings. Registration and reception at Tamarind Beach Resort, 1800 – 2100. Drinks and hors d'oeuvres will be served, and cruise packages will be distributed. Dinner is available at Tamarind Beach Resort, but is not included in the cruise fee.
- Sunday* Lay day. Explore one or more anchorages in the Grenadines. Possibilities are many, and include the Tobago Cays, Mayreau, Union Island, and behind the reef on the windward side of Canouan. Or sail up to Bequia and spend a day exploring.
- Monday* Sail to Admiralty Bay, Bequia. Scuba diving in the morning for those interested. Meet ashore at the Frangipani Hotel at 1545. Taxis are arranged to provide transportation to Moonhole, included in cruise fee. Moonhole. Commodore's reception at the residence of Charles and Cornelia Brewer in Moonhole, with music by local band. Return to taxis for transportation to Spring on Bequia. Dinner and music at Spring, at which the Prime Minister of St. Vincent and his party will be our guests.
- Tuesday* Lay day. Explore Bequia, or sail up to Mustique; or go someplace else!
- Wednesday* Sail to Tyrrel Bay, Carriacou, Grenada. Arrive by 1500 to clear customs (special arrangements are being made to clear in Tyrrel Bay). Barbecue, open bar, and "jump up" at Carriacou Yacht Club, 1700 – end.
- Thursday* Race or cruise to Prickly Bay, Grenada (about 35 miles). Race starts at 1000. Details to be provided by the Race Committee. After arriving in Grenada, the fleet will raft for cocktails in beautiful Prickly Bay.
- Friday* Lay day. Cruise along the south coast of Grenada, or take a tour of Grenada. Tours will depart from Spice Island Marine at 0900. Scuba diving.
- Saturday* Moorings yachts to be turned in by noon at True Blue. Tour of the St. George's market, 0800. Trip to La Sagesse for lunch and swimming, 1200. Cocktails and final cruise dinner dance at True Blue Resort, 1800. Local dignitaries have been invited.

GENERAL INFORMATION

Dress code

The dress code for the cruise is casual. Ties and jackets are not required at any of the events, although you certainly wear them if you please. At the Commodore's Reception and Dinner in Bequia, and at the final dinner dance in Grenada, we are inviting official guests including heads of state, so dress for those events should be "smart casual" rather than "yachtie casual."

Cruise Gear

Cruise hats and shirts will be handed out at registration, as well as local items of interest and canvas briefcases bearing the cruise logo.

Rafting

Rafting is highly encouraged! To invite others to raft up, deploy your fenders over the side.

Communications

Cruise announcements, if any, will be broadcast daily at 0800 on Channel 72. Gordon Vineyard will be the Communications Officer (the name of his charter boat will be announced). Boats are encouraged to monitor Channel 16 as the hailing channel. Once contact has been made, switch to another channel.

Navigation

Each skipper is responsible for the safe navigation of his vessel, and no guidance on that issue is provided by this guide except the following from Donald Street:

- Do not enter a strange harbor at night if at all possible.
- In the Caribbean, knowing how to read the water is as important as knowing how to read a chart. Eyeball navigation is the key to safe and satisfying sailing in the islands.

Yacht Storage in Grenada

For members who wish to leave their yachts in Grenada after the cruise, we recommend Island Dreams Yacht Services, which operates an excellent boat-watching service in Clarke's Court Bay. Anita Sutton, our Grenada agent, can provide you with details.

CRUISE COMMITTEE AND EVENT COORDINATORS

Cruise Chairman	Sib Reppert
Cruise Treasurer	Charlie Willauer
Communications and Cruise Gear	Gordon Vineyard
Race Committee	Nick Brown and John Sanford
Bequia Events	Charles and Cornelia Brewer Gus Koven
Carriacou Events	Roy Hopper, Tyrrel Bay Yacht Haulout
Grenada Events	Morgan Barker and Nick Brown Anita Sutton, Island Dreams Yacht Services
Hiking Coordinator	Dianna Emory (<i>Minerva</i>)
Scuba Coordinator	Tod White (sailing with Andrew Dossett)

EVENT INFORMATION

Saturday, March 13 -- Canouan

Registration and a reception will be held at the Moorings base at the Tamarind Beach Hotel on Grand Bay – see the chart on the following page.

Anchor in Charlestown Bay in the vicinity of The Moorings' mooring field, or contact The Moorings for, yes, a mooring.

Registration will commence at 1700. Participants are encouraged to discuss their plans for cruising during the lay days and to make their own informal arrangements.

The reception, featuring an open bar and snacks, commences at 1800 and continues to 2100.

Buffet dinner (\$36 US per person) is available at the Tamarind Beach Hotel. Many of you have already prepaid for the dinner, and those who do not should be able to dine at their expense. Dinner will be held between 2000 and 2200.

Sunday -- Lay Day

Some ideas:

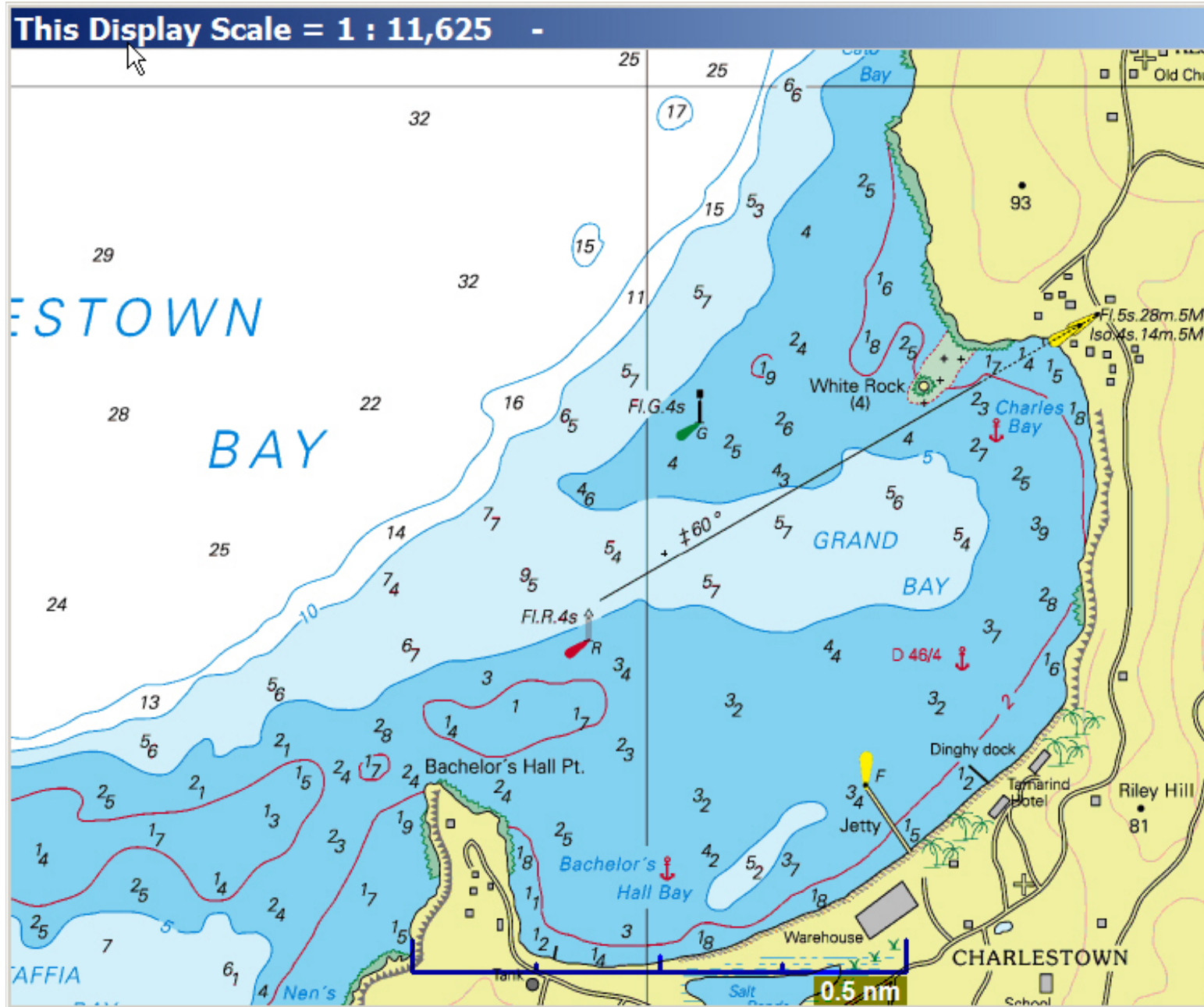
Take a hike around Canouan. Or go diving (the Blueway Diving Center at Tamarind Beach will pick up from your yacht).

Explore the lagoon behind the reef on the windward side of Canouan – reportedly a beautiful anchorage – but beware the coral heads!

Sail down to the Tobago Cays for some snorkeling.

Sail north to Bequia so that you can have a full day there on Monday.

CHARLESTOWN BAY, CANOUAN



Monday -- Bequia

Anchor in Admiralty Bay (see the following chart). For assistance in obtaining a mooring, call Phat Shag, Cell # 455-5691 or Channel 68 for hailing.

We are arranging a scuba diving trip in the morning via Dive Bequia. Details will be provided during registration in Canouan.

The main events of the day are the Commodore's Cocktail Party at "Ravine Landing," the home of CCA members Charles and Cornelia Brewer in Moonhole, followed by dinner at Spring on Bequia:

Before you leave your boat, remember to bring a flashlight

Plan to meet at the Frangipani Hotel (shown on the chart) by 1545.

Taxis are being organized by Locklyn Olliviere (cell # 593-5955, also Channel 68). Taxis will be parked BEHIND the Frangipani Hotel (each carries 10 people). To get to the back parking lot, walk past the prominent Frangipani bar.

The taxis have already been paid for out of your cruise fee.

By taxi, you will proceed to the gate of Moonhole. You will disembark at Moonhole Gate and walk up the fisherman's path to Ravine Landing, which cascades over seven different levels. The path is shown on the following drawing. The walk takes 10 - 15 minutes, and will be marked with blue and white ribbons.

The Brewers are graciously providing wait staff, hors d'oeuvres, mixers, and soft drinks as well as "Elvis" the steel drum music man for the cocktail party, at which we will serve a Caribbean version of Sandy Weld's Rum Punch.

After cocktails, you will walk back down to Moonhole Gate (thus the flashlight) and be taken by taxi to Spring on Bequia for dinner and dancing.

We will be joined by some very distinguished guests:

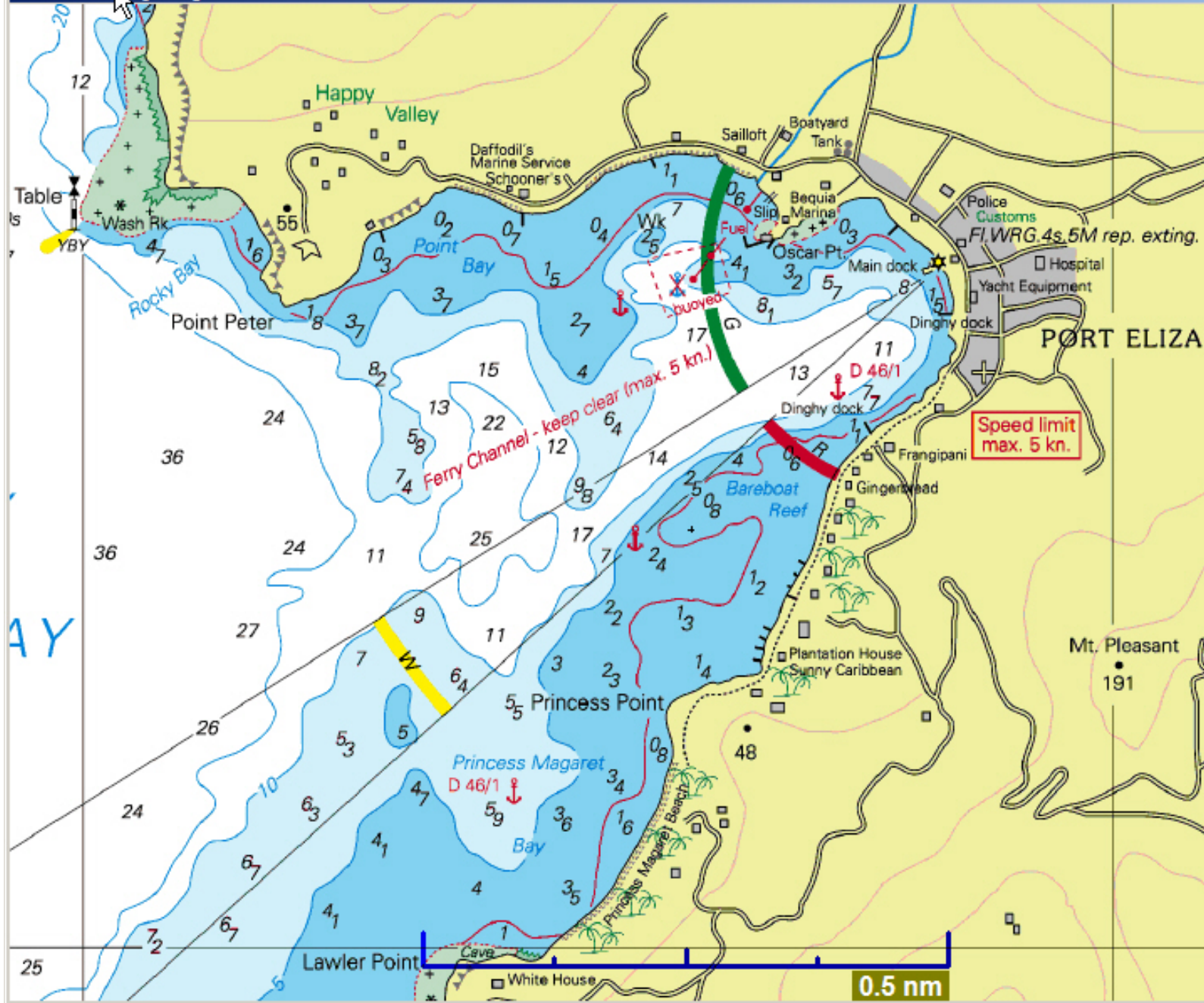
Prime Minister The Right Honorable Dr. Ralph E. Gonsalves and Mrs.
Eloise Gonsalves

The Honorable Dr. Lorraine Friday, Parliamentary Representative of the
Northern Grenadines and Mrs. Ave Friday

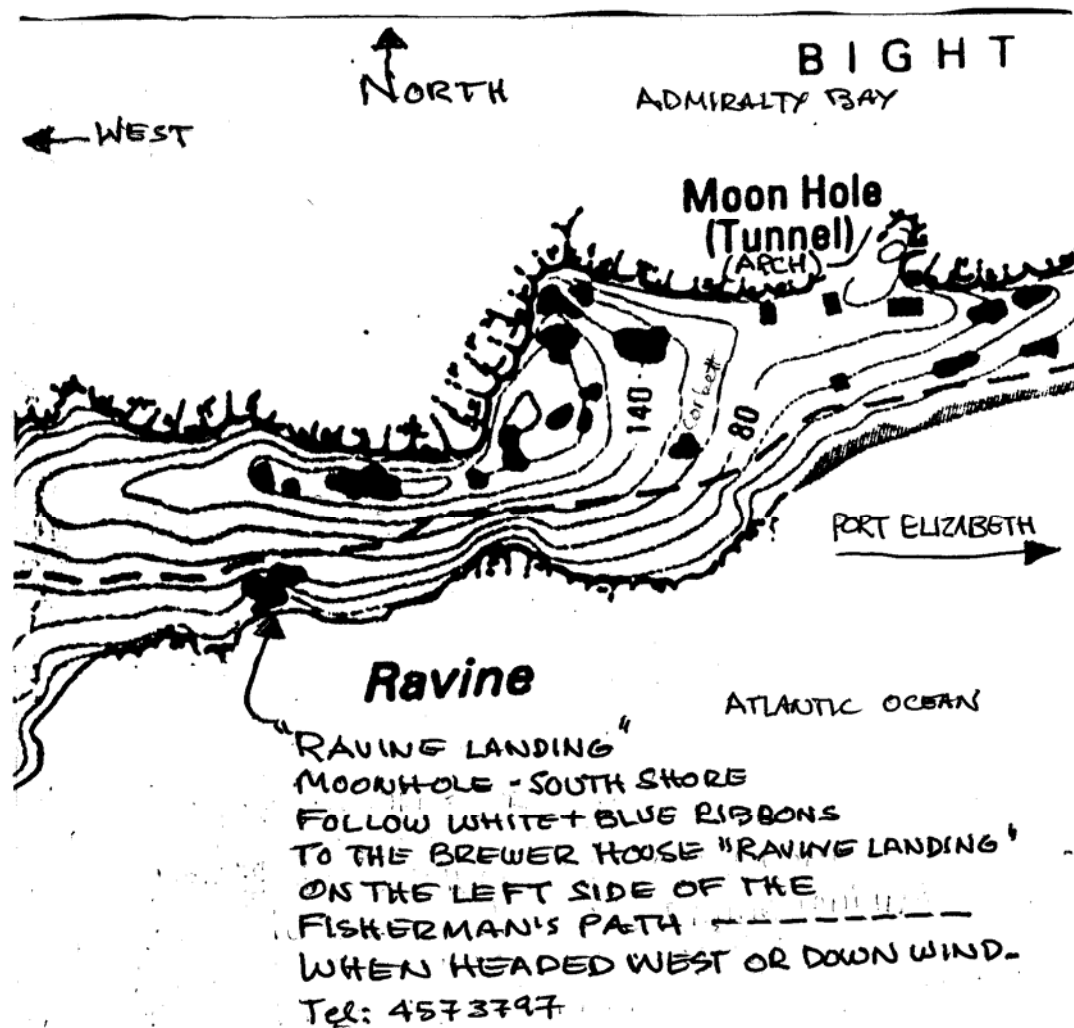
Music will be provided by Jan Smith (an expert diver who works with Dive Bequia) on sax and Louis O'Neil on keyboard.

ADMIRALTY BAY, BEQUIA

This Display Scale = 1 : 11,250 -



THE PATH TO RAVINE LANDING, MOONHOLE



Ideas for Exploring Bequia

CCA member Gus Koven, who resides on Bequia and will be joining us at Ravine Landing and Spring, provides the following::

Bequia is a beautiful quaint dry island covering about 7 square miles. The major town is Port Elizabeth located on the east side of Admiralty Bay. Bequia is blessed with many beaches including Princess Margaret, Low Bay, Friendship beaches on the leeward side and Industry, Park, Spring, Hope and Ravine beaches on the windward side.

The pace on Bequia is slow and the people are extremely helpful and friendly. There are no big hotels but many fun small hotels and restaurants. Bequia is easy to get around by foot, cab or local “dollar vans”. Visit www.bequiatourism.com for more information and pictures.

Things to do include:

Visit the windward side including Spring, Industry and Park Estates. The Old Hegg Turtle Sanctuary is located in Park. Former seaman Orton (Brother) King started the sanctuary to save the endangered Hawksbill turtles. He finds just hatched Hawksbill turtles on Bequia beaches and raises them until they are able to fend for themselves and releases them after about two years. It is a wonderful operation with about 200 turtles of various sizes. Your donations are much appreciated, as that is Old Hegg’s only source of funds. Other things to see are the Crescent Beach Bar in Industry, Spring Studios Pottery and Art and Spring on Bequia Hotel in Spring. Spring Studios is run by Mike (the potter) and Maggie (the painter) phone 784 457 3757.

Mount Pleasant is located southeast of the harbor and has a wonderful view south through the Grenadines. On a clear day you can see Grenada. Visit the Old Fort Hotel for a drink or meal on the south side of Mount Pleasant. Nearby to the west is Friendship Bay with the friendly Friendship Bay Hotel. Further along toward the Airport is the Waling Museum, home of the late well know whaler Athneal Ollivierre. Inside the Museum are interesting whaling memorabilia. Nearby is The Boathouse Studio selling painting by L.D. Lucy and model boats that sail by Prop King. Paget Farm is a colorful fishing village near the Airport. The Banana Patch Studio is located in Paget Farms. Sam McDowell is a famous scrimshaw artist carving pocket and sailing knives. Additionally he is a world-class collector of fine old scrimshaw and maritime artifacts and a painter of whaling scenes and island life. His wife Donna creates beautiful Sailors Valentines on rare hardwood normally on commission for collectors. This is a must stop if you want a beautiful customized sailing knife or very special sailors valentine for yourself or as a gift. It is important to call for appointment: 784 458 3865. Beyond the Airport is Moonhole , the beautiful development by the late artist Tom Johnson .

Hike to Hope Beach. This windward side beach is remote with no road. There are huge breaking waves (sometimes too huge and dangerous) for swimming, body surfing or surfing. Bring water and leave any valuables locked on the boat. If you are lucky you may meet Jacob Scott the self appointed caretaker of the beach and local artist. He sells things he makes from beach combing to tourists and the rich and famous on Mustique, Bequia and other islands. Any taxi can drop you off at the top of the trail to Hope Beach, either Hope side (the easier) or Mount Pleasant side and pick you up later or walk from the harbor going one way and returning the other. That is a tough hike!

Hike to Ravine Beach. This south facing very small black sand beach is in a small and beautiful valley. Hike down from Mount Pleasant and then up to Friendship Bay past an amazing blowhole. Swimming is a bit dangerous but the scenery makes up for it.

Sit on Low Bay Beach. Many locals and tourists go to De Reef on Low Bay and just hang out. It is a casual bar, which makes great simple food and good drinks. You can rent small sailboats or just catch the sun and swim. Other lunch places near by include Keegans, Coco's, and Dawn's.

Sail the Friendship Rose or Passion. The Friendship Rose is an island schooner build on the beach in Friendship bay years ago. It provided the most reliable ferry service to St Vincent from Bequia until the large motorized ships began to operate. Friendship Rose retired from the ferry service in the early 90's and started a new life of taking tourists to Tobago Cays, Mustique, leeward coast of St Vincent or around Bequia. She is a wonderful sailing vessel still captained by her original owner Captain Lewis. Call for a schedule and reservations: 784 458 3661 or mobile 784 455 3020. The Passion is a 60 foot Catamaran which offers similar trips. Phone: 784 458 3884

Go scuba diving or snorkeling. There is at least two dive centers on Bequia: Dive Bequia; www.dive-bequia.com and Bequia Dive Adventures www.BequiaDiveAdventures.com

Shopping. There are many very nice shops in Port Elizabeth selling locally made goods. Be certain to visit the miniature sailboat shops which start on the north side of the town. The boats are made from local gum trees and many sail well. Most shops can make a customized model of your boat. You can have them remove the mast for shipping back to the USA.

For boat supplies go to the local fresh market in the harbor, Doris' Fresh Food (she has a good selection of frozen food, cheese and wine) across the road from the vegetable/fruit market, Knights, Knights Trading and Euro Shopper (which is just outside town).

Restaurants We Like:

Pizza: Macs Pizza(fresh tomato, bacon and mushrooms)

Local food(fish): Fernandos in Low Bay. See cover of phone book for phone number(great fish)

Fish: CoCo's Low Bay (great view)

Fish: Gingerbread House (relaxing, good view and great gingerbread desert)
Local Food: Frangipani Restaurant (good food)
Jump Up: Frangipani Hotel on Thursday night (buffet that night)
Fancy: L’Auberge des Grenadines
Fancy: The Old Fort
Real local food: Daphane Cooks It(very local)
Sunday Lunch: Spring on Bequia (curry lunch)
Full Moon: Around full moon there is a special dinner at The Crescent Beach Bar at Industry

Tuesday

This is a lay day.

Follow Gus’s advice and explore Bequia. A couple named Francois and Martina at 784-457-3898 conduct hiking tours.

Another choice is to sail up to Mustique for the night. Charles Brewer advises: “There is an open roadstead with rental moorings and a dinghy dock. Basil’s, on the water as you go ashore, is informal, and you may even see a celebrity wandering around in a terrycloth robe. Cotton House, and old plantation house, is much more formal, but beautiful, and Firefly – newest and very good lunch – is in between Cotton House and Basil’s. Sightseeing tours of Mustique are available.

Wednesday

Today we sail to another country, Grenada.

We are now making arrangements for the fleet to clear customs at Tyrrel Bay, Carriacou, Grenada, instead of Hillsborough, the regular port of entry. Details will be provided Registration and in morning fleet announcements.

According to Chris Doyle: “Carriacou is the only place where I have frequently seen a pelican sitting on a buoy, with a seagull sitting on the pelican’s head, both appearing content in the afternoon sun.”

Tyrrel Bay is large, with a halfmoon-shaped beach – see the following chart.

At 1700, come ashore to the Carriacou Yacht Club (see chart) for an open bar, music, and barbecue, including chicken, baby-back ribs, catch of the day, and assorted vegetables.

Thursday

The Fun Race will be sailed from Tyrrell Bay to Prickly Bay, Grenada, a distance of about 35 miles. The Fun Race will feature a Le Mans start from the beach at Tyrrel Bay. Extra

points if at least one crew member swims to his/her boat. All boats will be at anchor with sails furled when the race starts at 1000 hours. All boats have a 30 minute powering allowance that can be used at any time. The finish line is due south (magnetic) of the lighthouse structure on Lance aux Epines (the point on the east side of Prickly Bay). All yachts will record their own finish times and report them to the Race Committee. The finish line can be crossed from either direction. Grenada can be left to port or starboard. There are no course marks, but mind the coral reefs! A suitable allowance will be given for fish caught during the race.

The Race Committee will provide further details. The Caribbean Sailing Association Rating Rule will be used, and ratings will be approximated for yachts that do not have CSA ratings. A chart of the course follows. All are encouraged to participate!

Steve Taylor studied the charts and reports the following:

The shortest routes that don't run aground with 8 feet of draft (i.e. no regard for wind or current) are 35.5 nautical miles for the windward route, and 36.7 nm for the leeward route. These distances are from the 5-meter depth curve just SW of the reef in the center of Tyrell Bay. Add .25 nm to both routes if you want to go from the most likely "at anchor" position of the fleet before departure.

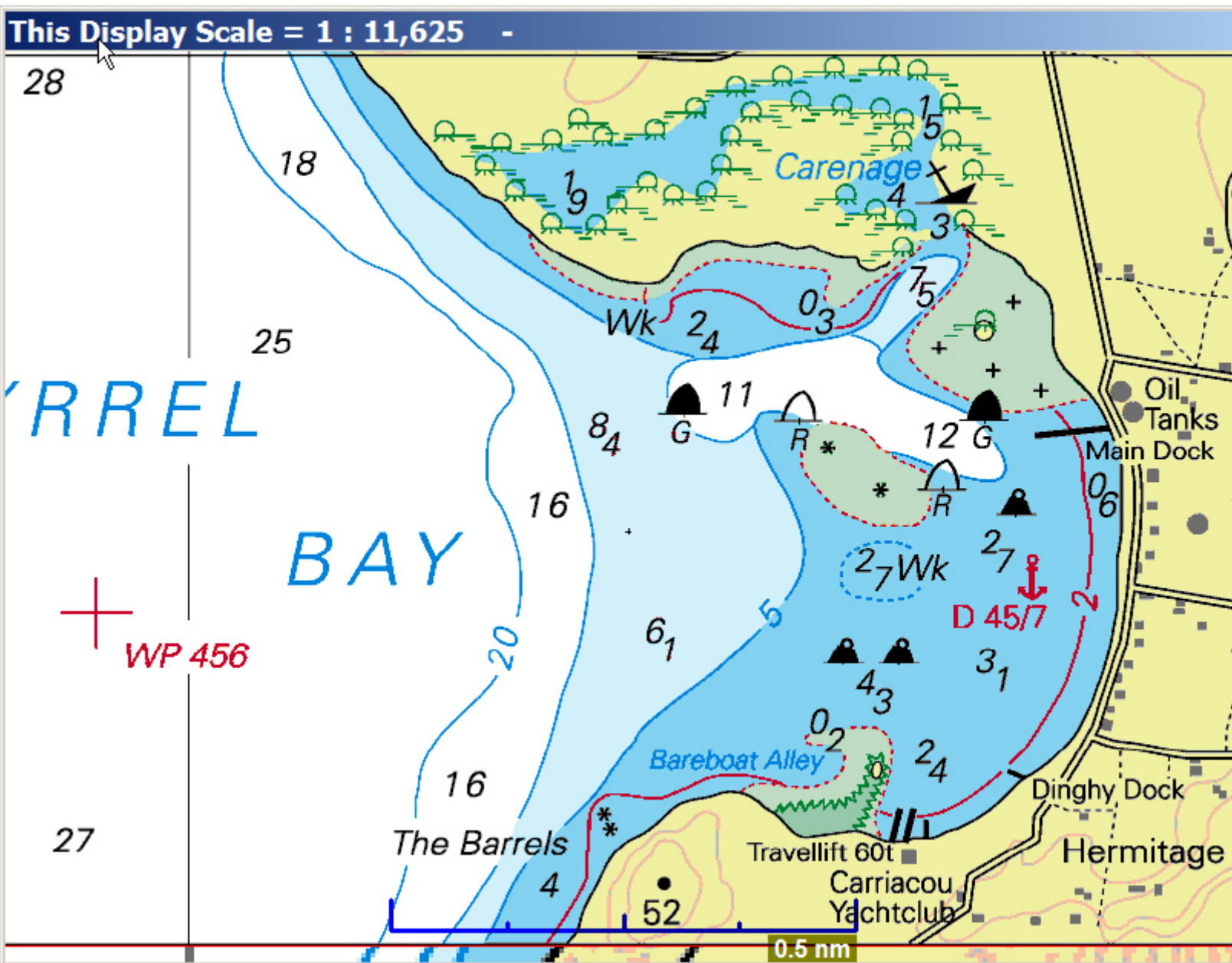
In reality, anyone taking the leeward route will deliberately sag off some to the west to maintain some breeze under the mountains (unless they're powering), and anyone not absolutely crazy taking the windward route will stand higher than I've calculated to give the surf line some safe distance.

From experience, absent rating incentives to do otherwise, anyone wanting to win the race under sail in normal trades will surely take the windward route, as the wind goes light-to-haywire in MANY areas along the leeward route, and LOTS of extra sea room could be sailed to windward without much extra distance. Then, at the end, the windward guys are running clear to the finish, while the leeward guys have two miles close hauled followed by two miles dead to windward.

Following the race, boats are encouraged to raft in Prickly Bay for rum punch, sea stories, and weighing of all fish caught. We will announce the details regarding this event.

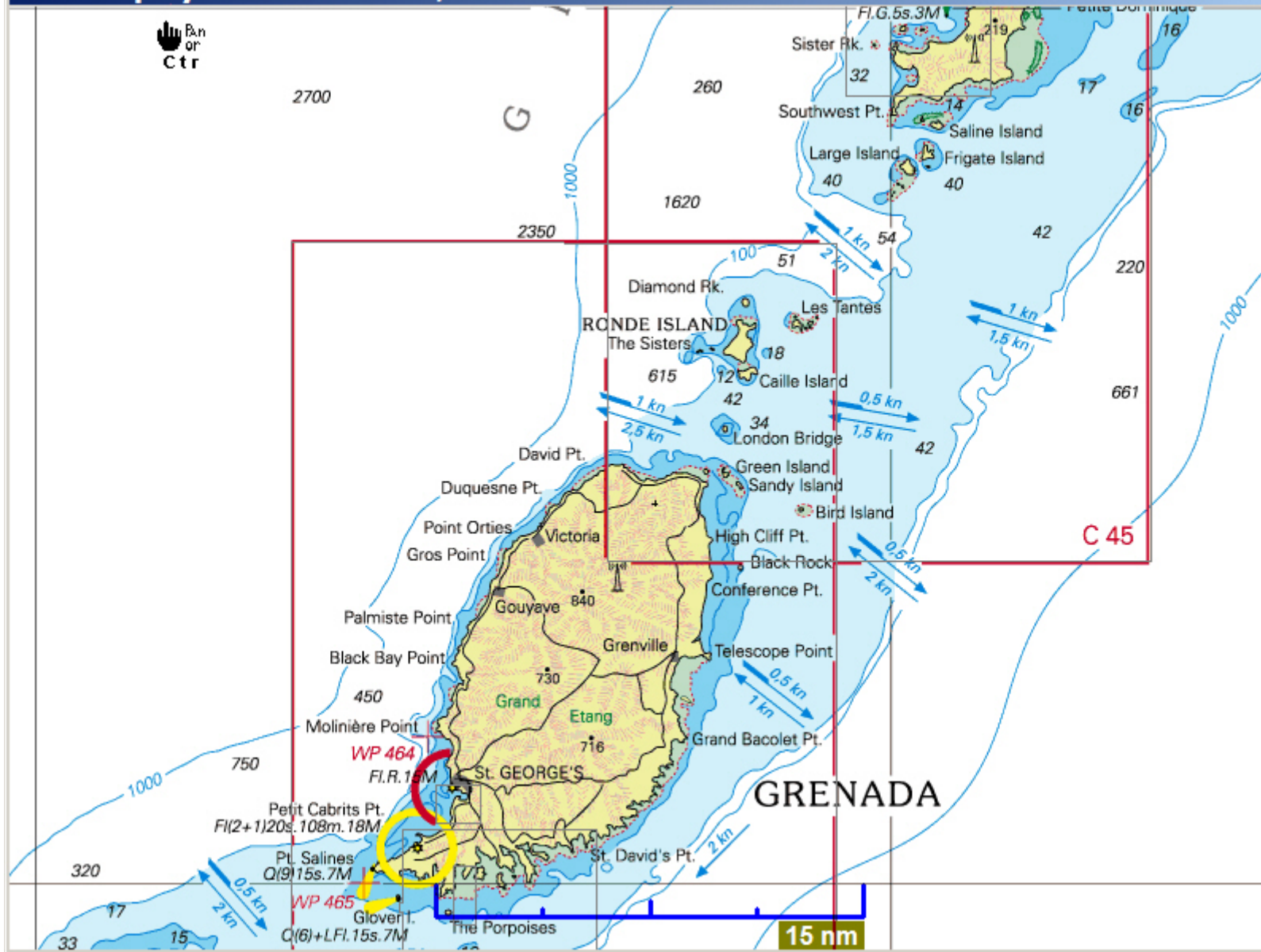
For those inclined to party ashore, we recommend the Boatyard Restaurant & Bar at Spice Island Marine, which is a lively yachtie hangout with an excellent steel band from about 1900 to 2100, then usually a local rock/blues/reggae band.

TYRREL BAY, CARRIACOU

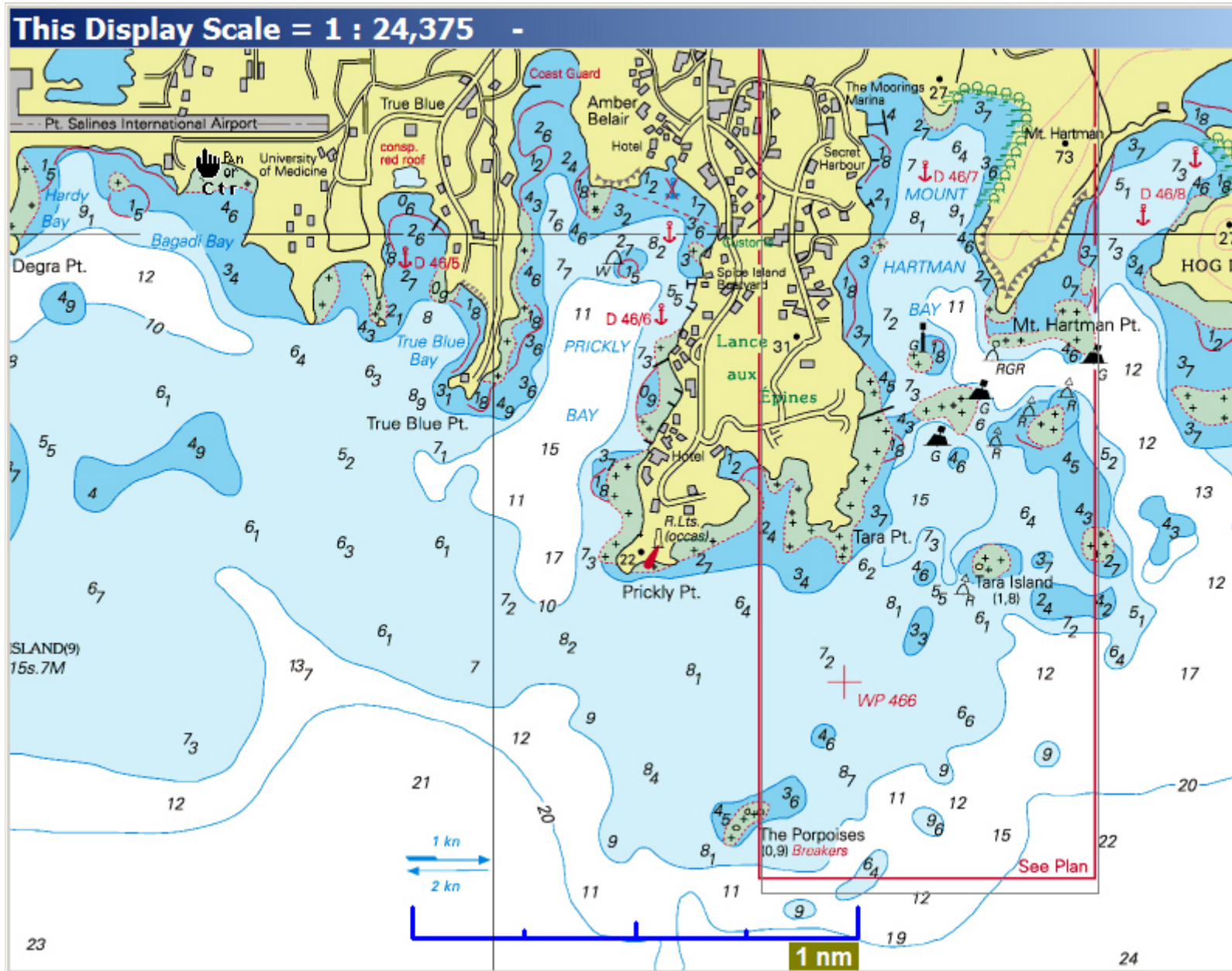


THE RACE COURSE

This Display Scale = 1 : 375,000 -



THE FINISH, TRUE BLUE BAY AND PRICKLY BAY



Friday - Grenada

This is a day to explore the beautiful island of Grenada.

Grenada is lush and mountainous, and presents great opportunities for touring and hiking. In addition, the capital city of St. George's is colorful and worth a visit.

With the gracious help of Anita Sutton of Island Dreams Yacht Services in Grenada, we have arranged for a full schedule of events.

We are offering tours that will be provided by Henry's Safari Tours. Morgan Barker will coordinate to organize our group into separate tours, some more energetic than others. Henry specializes in hikes and knows the trails well. Grenada's rain forest offers some beautiful waterfalls and vistas. We will provide more information at Registration and during the cruise.

Henry charges US \$35 for a full day tour (7 hours) per person, lunch included, and \$28 for a half day, lunch included. He also offers a 4 hour tour of the coast, no lunch, for \$20. You will be responsible for making your own financial arrangements for any tours that you take.

The south coast of Grenada provides some of the best cruising in the Caribbean, and you may wish to explore the coast by boat. There are many attractive harbors, and we will provide suggestions.

Saturday - Grenada

Moorings charter boats must be returned at True Blue Bay, next to Prickly Bay and adjacent to the air port.

We are offering a tour to the colorful open market in St. George's. We will provide further details at Registration.

Many of you have signed up for a trip to La Sagesse Nature Center, a very pretty and remote spot on the south east corner of Grenada that is situated on a beautiful and secluded beach. This event will cost \$10 per person for transportation and about US \$20 per person for lunch -- highly recommended by the Cruise Chairman! After lunch, relax on the beach and swim for a few hours, then return to True Blue for the evening's festivities.

Our final event of the cruise will be a dinner dance at True Blue Resort, where many of you will also be spending the night. This event starts with an open bar at 1800, and includes a buffet dinner and a dance band.

We have invited a number of Grenada dignitaries to this event, including the following:

The Honorable Keith Mitchell, Prime Minister, and Mrs. Mitchell

Governor General Sir Daniel Williams and Lady Williams

U.S. Charge d'Affairs Dr Nadia Tangar and, if she is on the island,
U.S. Ambassador Mary Kramer

Honorable Brenda Hood, Minister of Tourism, and Mr. Hood

PARTICIPATING CCA MEMBERS, SPOUSES, FAMILY, GUESTS

Kalikobass

Com. Truman Casner, BOS
Cinnie Casner
V.C. Ned Rowland, BOS
Susie Rowland
Jim Harvie, BOS
Ruth Harvie
Jim Pitney, BOS
Mimi Pitney

Bolero

Ed Kane, BOS
Ed, crew
Condor, crew

Calliope of Arne

George Brooks, NYS
Carol Taylor
Jim Neumeister
Marty Neumeister

Cloud Nine

Roger Swenson, SAF
Gaynelle Swenson
Don Bekins, SAF
Joanie Bekins

Defiant

Don McGraw, BOS
Doug MacLeod, BOS/BUZ
Helen Brown
Bill Cook, BOS
John Osmond, BOS/BUZ
Ellyn Osmond
John Doty, BOS

Eight Bells

Peter Willauer, BOS/GMP
Carol Willauer
Jack Griswold
Zdemka Griswold

Minerva

Ben Emory, BOS/GMP
Dianna Emory
Lee Judd
Ann Judd

Mystique

Lu Taylor, SAF
Jean Taylor

Palawan

J.C. Hoopes, NYS
Norman Angus
Bob Rafford
Sam Lehr
Dan Nerney BOS/BUZ

Synergy

Dave Penfield
Steve Taylor, BOS/BUZ
M.E. Malone
Max Taylor
Conrad Taylor

Windquest (Bequia only)

Thatcher Brown, CHE
Mrs. Brown
Tris Colket
Ruth Colket

Moorings 43

Morgan Barker, CHE
Diane Hutson-Wiley
Keith Kennedy
Claudia Kennedy

Moorings 4700

Nick Brown, BOS/BUZ
Diane Brown
Gary Fisher, BOS/BUZ
Angela Fisher
John Brown
Britt Ahlfert
George Lewis BOS
Emily Lewis

Moorings 413

Jim Chambers, FLA
Sue Chambers
Jack Towle, BOS
Pam Barker

Moorings 43

Andrew Dossett, SOC
Corinne Dossett
Tod White
Linda White

Moorings 43

Ted Murphy, BOS/BUZ
Sally Murphy
Brendan Kelley
Pam Kelley

Moorings 505

Paul Perkins, BOS
Mary Perkins
Paul Perkins, Jr.
Nancy Perkins
Warren Perkins
John Ferry, BOS/BUZ
Bill Saltonstall, BOS
Lee Campbell, BOS

Moorings 413

Sib Reppert, BOS/BUZ
Chris Vezetinski
Cat Reppert, BOS
Gordon Vineyar, BOS/BUZ
Phyllis Vineyard

Moorings 46

Peter Ross, ESS
Joan Ross
Tony Halsey, ESS
Sandy Halsey
Jim Robins
Ann Robins

Moorings 43

Herb Schartz, NYS
Nan Schwartz
Fred Keire, NYS
Anita Keire

Moorings 4200

Lou Scott, SOC
Stan Livingston, BOS/BUZ
Martie Livingston
Bill Whitney, PNW
Joe Lucas, FLA
Linda Lucas

Moorings 505

John Sanford, SAF
Eric Sanford
Richard Leather, SAF
Charles Bacigalupi, SAF

Bequia only

Charles Brewer, ESS
Cornelia Brewer
Jim Daras
Wendy Brewer
Haden Grewer
Gus Koven, NYS
Liza Koven

Totals:

48 CCA Members
114 Participants
21 Yachts

FACTS ABOUT THE ISLANDS WE ARE VISITING

The World Factbook



Saint Vincent and the Grenadines



Introduction Saint Vincent and the Grenadines

Background: Disputed between France and the United Kingdom in the 18th century, Saint Vincent was ceded to the latter in 1783. Autonomy was granted in 1969 and independence in 1979.

Geography Saint Vincent and the Grenadines

Location: Caribbean, islands between the Caribbean Sea and North Atlantic Ocean, north of Trinidad and Tobago

Geographic coordinates: 13 15 N, 61 12 W

Map Central America and the Caribbean

references:	
Area:	<i>total:</i> 389 sq km (Saint Vincent 344 sq km) <i>water:</i> 0 sq km <i>land:</i> 389 sq km
Area - comparative:	twice the size of Washington, DC
Land boundaries:	0 km
Coastline:	84 km
Maritime claims:	<i>contiguous zone:</i> 24 NM <i>territorial sea:</i> 12 NM <i>exclusive economic zone:</i> 200 NM <i>continental shelf:</i> 200 NM
Climate:	tropical; little seasonal temperature variation; rainy season (May to November)
Terrain:	volcanic, mountainous
Elevation extremes:	<i>lowest point:</i> Caribbean Sea 0 m <i>highest point:</i> Soufriere 1,234 m
Natural resources:	hydropower, cropland
Land use:	<i>arable land:</i> 10.26% <i>permanent crops:</i> 17.95% <i>other:</i> 71.79% (1998 est.)
Irrigated land:	10 sq km (1998 est.)
Natural hazards:	hurricanes; Soufriere volcano on the island of Saint Vincent is a constant threat
Environment - current issues:	pollution of coastal waters and shorelines from discharges by pleasure yachts and other effluents; in some areas, pollution is severe enough to make swimming prohibitive
Environment - international agreements:	<i>party to:</i> Biodiversity, Climate Change, Desertification, Endangered Species, Environmental Modification, Hazardous Wastes, Law of the Sea, Ozone Layer Protection, Ship Pollution, Whaling <i>signed, but not ratified:</i> Climate Change-Kyoto Protocol
Geography - note:	the administration of the islands of the Grenadines group is divided between Saint Vincent and the Grenadines and Grenada; Saint Vincent and the Grenadines is comprised of 32

islands and cays

People	Saint Vincent and the Grenadines
Population:	116,812 (July 2003 est.)
Age structure:	<i>0-14 years:</i> 28.2% (male 16,755; female 16,163) <i>15-64 years:</i> 65.5% (male 39,308; female 37,149) <i>65 years and over:</i> 6.4% (male 3,215; female 4,222) (2003 est.)
Median age:	<i>total:</i> 25.3 years <i>male:</i> 25.1 years <i>female:</i> 25.5 years (2002)
Population growth rate:	0.34% (2003 est.)
Birth rate:	17.16 births/1,000 population (2003 est.)
Death rate:	6.08 deaths/1,000 population (2003 est.)
Net migration rate:	-7.66 migrant(s)/1,000 population (2003 est.)
Sex ratio:	<i>at birth:</i> 1.03 male(s)/female <i>under 15 years:</i> 1.04 male(s)/female <i>15-64 years:</i> 1.06 male(s)/female <i>65 years and over:</i> 0.76 male(s)/female <i>total population:</i> 1.03 male(s)/female (2003 est.)
Infant mortality rate:	<i>total:</i> 15.7 deaths/1,000 live births <i>female:</i> 14.27 deaths/1,000 live births (2003 est.) <i>male:</i> 17.08 deaths/1,000 live births
Life expectancy at birth:	<i>total population:</i> 73.08 years <i>male:</i> 71.3 years <i>female:</i> 74.92 years (2003 est.)
Total fertility rate:	1.95 children born/woman (2003 est.)
HIV/AIDS - adult prevalence rate:	NA%
HIV/AIDS - people living with HIV/AIDS:	NA
HIV/AIDS -	NA

deaths:

Nationality: *noun:* Saint Vincentian(s) or Vincentian(s)
adjective: Saint Vincentian or Vincentian

Ethnic groups: black 66%, mixed 19%, East Indian 6%, Carib Amerindian 2%, other 7%

Religions: Anglican 47%, Methodist 28%, Roman Catholic 13%, Hindu Seventh-Day Adventist, other Protestant

Languages: English, French patois

Literacy: *definition:* age 15 and over has ever attended school
total population: 96%
male: 96%
female: 96% (1970 est.)

Government	Saint Vincent and the Grenadines
-------------------	---

Country name: *conventional long form:* none
conventional short form: Saint Vincent and the Grenadines

Government type: parliamentary democracy; independent sovereign state within the Commonwealth

Capital: Kingstown

Administrative divisions: 6 parishes; Charlotte, Grenadines, Saint Andrew, Saint David, Saint George, Saint Patrick

Independence: 27 October 1979 (from UK)

National holiday: Independence Day, 27 October (1979)

Constitution: 27 October 1979

Legal system: based on English common law

Suffrage: 18 years of age; universal

Executive branch: *chief of state:* Queen ELIZABETH II (since 6 February 1952), represented by Governor General Sir Fredrick Nathaniel BALLANTYNE (since 2 September 2002)
elections: none; the monarch is hereditary; the governor general is appointed by the monarch; following legislative elections, the leader of the majority party is usually appointed prime minister by the governor general; deputy prime minister appointed by the governor general on the advice of the prime minister

cabinet: Cabinet appointed by the governor general on the advice of the prime minister
head of government: Prime Minister Ralph E. GONSALVES (since 29 March 2001)

Legislative branch:	unicameral House of Assembly (21 seats, 15 elected representatives and 6 appointed senators; representatives are elected by popular vote from single-member constituencies to serve five-year terms) <i>election results:</i> percent of vote by party - NA%; seats by party - ULP 12, NDP 3 <i>elections:</i> last held 28 March 2001 (next to be held by March 2006)
Judicial branch:	Eastern Caribbean Supreme Court (based on Saint Lucia; one judge of the Supreme Court resides in Saint Vincent and the Grenadines)
Political parties and leaders:	National Reform Party or NRP [Joel MIGUEL]; New Democratic Party or NDP [Arnhim EUSTACE]; People's Progressive Movement or PPM [Ken BOYEA]; Progressive Labor Party or PLP [leader NA]; United People's Movement or UPM [Adrian SAUNDERS]; Unity Labor Party or ULP [Ralph GONSALVES] (formed by the coalition of Saint Vincent Labor Party or SVLP and the Movement for National Unity or MNU)
Political pressure groups and leaders:	NA
International organization participation:	ACP, C, Caricom, CDB, ECLAC, FAO, G-77, IBRD, ICAO, ICCT, ICFTU, ICRM, IDA, IFAD, IFRC, ILO, IMF, IMO, Interpol, IOC, ITU, OAS, OECS, OPANAL, OPCW, UN, UNCTAD, UNESCO, UNIDO, UPU, WCL, WFTU, WHO, WIPO, WTrO
Diplomatic representation in the US:	<i>chief of mission:</i> Ambassador Ellsworth I. A. JOHN <i>chancery:</i> 3216 New Mexico Avenue NW, Washington, DC 20016 <i>telephone:</i> [1] (202) 364-6730 <i>FAX:</i> [1] (202) 364-6736 <i>consulate(s) general:</i> New York
Diplomatic representation from the US:	the US does not have an embassy in Saint Vincent and the Grenadines; the US Ambassador in Barbados is accredited to Saint Vincent and the Grenadines

Flag description: three vertical bands of blue (hoist side), gold (double width), and green; the gold band bears three green diamonds arranged in a V pattern

Economy	Saint Vincent and the Grenadines
---------	----------------------------------

Economy - overview: Bananas and other agricultural products remain the staple of this lower-middle income country's economy. Although tourism and other services have been growing moderately in recent years, the government has been ineffective at introducing new industries. Unemployment remains high, and economic growth hinges upon seasonal variations in the agricultural and tourism sectors. Tropical storms wiped out substantial portions of crops in 1994, 1995, and 2002, and tourism in the Eastern Caribbean has suffered low arrivals following 11 September 2001. Saint Vincent is home to a small offshore banking sector, but its restrictive secrecy laws have come under international review. As of June 2001, it remained on the Financial Action Task Force's list of noncooperative jurisdictions. Saint Vincent is also the largest producer of marijuana in the Eastern Caribbean and is increasingly being used as a transshipment point for illegal narcotics from South America.

GDP: purchasing power parity - \$339 million (2002 est.)

GDP - real growth rate: -0.5% (2002 est.)

GDP - per capita: purchasing power parity - \$2,900 (2002 est.)

GDP - composition by sector: *agriculture:* 10%
industry: 26%
services: 64% (2001 est.)

Population below poverty line: NA%

Household income or consumption by percentage share: *lowest 10%:* NA%
highest 10%: NA%

Inflation rate (consumer prices): -0.4% (2001 est.)

Labor force: 67,000 (1984 est.)

Labor force - by occupation: agriculture 26%, industry 17%, services 57% (1980 est.)

Unemployment rate: 22% (1997 est.)

Budget: *revenues:* \$94.6 million
expenditures: \$85.8 million, including capital expenditures of \$NA (2000 est.)

Industries: food processing, cement, furniture, clothing, starch

Industrial production growth rate: -0.9% (1997 est.)

Electricity - production: 92.48 million kWh (2001)

Electricity - production by source: *fossil fuel:* 69.3%
hydro: 30.7%
other: 0% (2001)
nuclear: 0%

Electricity - consumption: 86 million kWh (2001)

Electricity - exports: 0 kWh (2001)

Electricity - imports: 0 kWh (2001)

Oil - production: 0 bbl/day (2001 est.)

Oil - consumption: 1,250 bbl/day (2001 est.)

Oil - exports: NA (2001)

Oil - imports: NA (2001)

Agriculture - products: bananas, coconuts, sweet potatoes, spices; small numbers of cattle, sheep, pigs, goats; fish

Exports: \$53.7 million (2000 est.)

Exports - commodities: bananas 39%, eddoes and dasheen (taro), arrowroot starch, tennis racquets

Exports - partners: France 25.2%, Greece 19.1%, Spain 16.4%, UK 9.5%, US

7.1% (2002)

Imports: \$185.6 million (2000 est.)

Imports - commodities: foodstuffs, machinery and equipment, chemicals and fertilizers, minerals and fuels

Imports - partners: France 32.7%, US 11.3%, Trinidad and Tobago 10.4%, Singapore 10.1%, Spain 7.9%, Greece 4.3% (2002)

Debt - external: \$167.2 million (2000)

Economic aid - recipient: \$47.5 million (1995); note - EU \$34.5 million (1998)

Currency: East Caribbean dollar (XCD)

Currency code: XCD

Exchange rates: East Caribbean dollars per US dollar - 2.7 (2002), 2.7 (2001), 2.7 (2000), 2.7 (1999), 2.7 (1998)

Fiscal year: calendar year

Communications	Saint Vincent and the Grenadines
----------------	----------------------------------

Telephones - main lines in use: 20,500 (1998)

Telephones - mobile cellular: NA

Telephone system: *general assessment:* adequate system
domestic: islandwide, fully automatic telephone system; VHF/UHF radiotelephone from Saint Vincent to the other islands of the Grenadines
international: VHF/UHF radiotelephone from Saint Vincent to Barbados; new SHF radiotelephone to Grenada and to Saint Lucia; access to Intelsat earth station in Martinique through Saint Lucia

Radio broadcast stations: AM 1, FM 3, shortwave 0 (1998)

Radios: 77,000 (1997)

Television broadcast: 1 (plus three repeaters) (1997)

stations:

Televisions: 18,000 (1997)

**Internet
country code:** .vc

**Internet
Service
Providers
(ISPs):** 15 (2000)

**Internet
users:** 3,500 (2001)

Transportation	Saint Vincent and the Grenadines
-----------------------	---

Railways: 0 km

Highways: *total:* 1,040 km
paved: 320 km
unpaved: 720 km (1999 est.)

Waterways: none

**Ports and
harbors:** Kingstown

**Merchant
marine:** *total:* 769 ships (1,000 GRT or over) 6,365,887 GRT/9,665,937 DWT

ships by type: bulk 133, cargo 376, chemical tanker 21, combination bulk 7, container 58, liquefied gas 8, livestock carrier 4, multi-functional large-load carrier 2, passenger 5, petroleum tanker 43, refrigerated cargo 46, roll on/roll off 45, short-sea passenger 10, specialized tanker 10, vehicle carrier 1
note: includes some foreign-owned ships registered here as a flag of convenience: Albania 1, Anguilla 1, Argentina 1, Australia 2, The Bahamas 1, Bangladesh 1, Barbados 2, Belgium 4, Bulgaria 14, Canada 1, Cayman Islands 1, China 135, Colombia 1, Croatia 12, Cyprus 6, Denmark 16, Egypt 7, Estonia 6, France 27, Germany 12, Greece 156, Guyana 7, Hong Kong 23, Iceland 1, India 11, Indonesia 3, Israel 2, Italy 19, Japan 1, Kenya 4, Latvia 5, Lebanon 9, Liberia 5, Lithuania 1, Malta 1, Man, Isle of 1, Marshall Islands 3, Mexico 1, Monaco 6, Netherlands 14, Netherlands Antilles 1, Nigeria 3, Norway 33, Pakistan 5, Panama 2, Poland 2, Portugal 2, Puerto Rico 2, Russia 8, Saint Kitts and Nevis 1, Saudi Arabia 3, Singapore 4, Slovenia 7, South Korea 4, Spain 1, Sweden 6, Switzerland 10, Syria 2, Taiwan 1, Thailand 1, Trinidad and Tobago 1, Tunisia 1, Turkey 15, Ukraine 8, UAE 45, UK 16,

US 25, Vietnam 1 (2002 est.)

Airports: 6 (2002)

Airports - total: 5
with paved runways: 914 to 1,523 m: 3
under 914 m: 2 (2002)

Airports - total: 1
with unpaved runways: under 914 m: 1 (2002)

Military	Saint Vincent and the Grenadines
Military branches:	Royal Saint Vincent and the Grenadines Police Force (includes Special Service Unit), Coast Guard
Military expenditures - dollar figure:	\$NA
Military expenditures - percent of GDP:	NA%
Transnational Issues	Saint Vincent and the Grenadines
Disputes - international:	protests Venezuela's claim to give full effect to Aves Island, which creates a Venezuelan EEZ/continental shelf extending over a large portion of the Caribbean Sea
Illicit drugs:	transshipment point for South American drugs destined for the US and Europe; small-scale cannabis cultivation

This page was last updated on 18 December, 2003

The World Factbook



Grenada



Introduction Grenada

Background: One of the smallest independent countries in the western hemisphere, Grenada was seized by a Marxist military council on 19 October 1983. Six days later the island was invaded by US forces and those of six other Caribbean nations, which quickly captured the ringleaders and their hundreds of Cuban advisers. Free elections were reinstituted the following year.

Geography Grenada

Location: Caribbean, island between the Caribbean Sea and Atlantic Ocean, north of Trinidad and Tobago

Geographic coordinates:	12 07 N, 61 40 W
Map references:	Central America and the Caribbean
Area:	<i>total:</i> 344 sq km <i>water:</i> 0 sq km <i>land:</i> 344 sq km
Area - comparative:	twice the size of Washington, DC
Land boundaries:	0 km
Coastline:	121 km
Maritime claims:	<i>exclusive economic zone:</i> 200 NM <i>territorial sea:</i> 12 NM
Climate:	tropical; tempered by northeast trade winds
Terrain:	volcanic in origin with central mountains
Elevation extremes:	<i>lowest point:</i> Caribbean Sea 0 m <i>highest point:</i> Mount Saint Catherine 840 m
Natural resources:	timber, tropical fruit, deepwater harbors
Land use:	<i>arable land:</i> 5.88% <i>permanent crops:</i> 26.47% <i>other:</i> 67.65% (1998 est.)
Irrigated land:	NA sq km
Natural hazards:	lies on edge of hurricane belt; hurricane season lasts from June to November
Environment - current issues:	NA
Environment - international agreements:	<i>party to:</i> Biodiversity, Climate Change, Desertification, Endangered Species, Law of the Sea, Ozone Layer Protection, Whaling <i>signed, but not ratified:</i> none of the selected agreements
Geography - note:	the administration of the islands of the Grenadines group is divided between Saint Vincent and the Grenadines and Grenada

People	Grenada
---------------	----------------

Population: 89,258 (July 2003 est.)

Age structure: *0-14 years:* 35.1% (male 15,840; female 15,492)
15-64 years: 61.3% (male 28,941; female 25,735)
65 years and over: 3.6% (male 1,502; female 1,748) (2003 est.)

Median age: *total:* 20.5 years
male: 21 years
female: 20 years (2002)

Population growth rate: 0.08% (2003 est.)

Birth rate: 22.87 births/1,000 population (2003 est.)

Death rate: 7.46 deaths/1,000 population (2003 est.)

Net migration rate: -14.56 migrant(s)/1,000 population (2003 est.)

Sex ratio: *at birth:* 1 male(s)/female
under 15 years: 1.02 male(s)/female
15-64 years: 1.12 male(s)/female
65 years and over: 0.86 male(s)/female
total population: 1.08 male(s)/female (2003 est.)

Infant mortality rate: *total:* 14.63 deaths/1,000 live births
female: 15.07 deaths/1,000 live births (2003 est.)
male: 14.18 deaths/1,000 live births

Life expectancy at birth: *total population:* 64.52 years
male: 62.74 years
female: 66.31 years (2003 est.)

Total fertility rate: 2.45 children born/woman (2003 est.)

HIV/AIDS - adult prevalence rate: NA%

HIV/AIDS - people living with HIV/AIDS: NA

HIV/AIDS - deaths: NA

Nationality: *noun:* Grenadian(s)
adjective: Grenadian

Ethnic groups: black 82%, mixed black and European 13%, European and East Indian 5% , and trace of Arawak/Carib Amerindian

Religions: Roman Catholic 53%, Anglican 13.8%, other Protestant 33.2%

Languages: English (official), French patois

Literacy: *definition:* age 15 and over can read and write
total population: 98%
male: 98%
female: 98% (1970 est.)

Government	Grenada
-------------------	----------------

Country name: *conventional long form:* none
conventional short form: Grenada

Government type: constitutional monarchy with Westminster-style parliament

Capital: Saint George's

Administrative divisions: 6 parishes and 1 dependency*; Carriacou and Petit Martinique*, Saint Andrew, Saint David, Saint George, Saint John, Saint Mark, Saint Patrick

Independence: 7 February 1974 (from UK)

National holiday: Independence Day, 7 February (1974)

Constitution: 19 December 1973

Legal system: based on English common law

Suffrage: 18 years of age; universal

Executive branch: *chief of state:* Queen ELIZABETH II (since 6 February 1952), represented by Governor General Daniel WILLIAMS (since 9 August 1996)
head of government: Prime Minister Keith MITCHELL (since 22 June 1995)
cabinet: Cabinet appointed by the governor general on the advice of the prime minister
elections: none; the monarch is hereditary; governor general appointed by the monarch; following legislative elections, the leader of the majority party or the leader of the majority coalition is usually appointed prime minister by the governor general

Legislative bicameral Parliament consists of the Senate (a 13-member

branch:	body, 10 appointed by the government and three by the leader of the opposition) and the House of Representatives (15 seats; members are elected by popular vote to serve five-year terms) <i>elections:</i> last held on 27 November 2003 (next to be held by NA November 2008) <i>election results:</i> House of Representatives - percent of vote by party - NA%; seats by party - NNP 8, NDC 7
Judicial branch:	West Indies Associate States Supreme Court (an associate judge resides in Grenada)
Political parties and leaders:	Grenada United Labor Party or GULP [Herbert PREUDHOMME]; National Democratic Congress or NDC [leader vacant]; New National Party or NNP [George McGUIRE]; People Labor Movement or PLM [leader NA]
Political pressure groups and leaders:	NA
International organization participation:	ACP, C, Caricom, CDB, ECLAC, FAO, G-77, IBRD, ICAO, ICFTU, ICRM, IDA, IFAD, IFC, IFRCS, ILO, IMF, IMO, Interpol, IOC, ISO (subscriber), ITU, LAES, NAM, OAS, OECS, OPANAL, OPCW (signatory), UN, UNCTAD, UNESCO, UNIDO, UPU, WHO, WIPO, WTrO
Diplomatic representation in the US:	<i>chief of mission:</i> Ambassador Denis G. ANTOINE <i>consulate(s) general:</i> New York <i>FAX:</i> [1] (202) 265-2468 <i>telephone:</i> [1] (202) 265-2561 <i>chancery:</i> 1701 New Hampshire Avenue NW, Washington, DC 20009
Diplomatic representation from the US:	<i>chief of mission:</i> the ambassador to Barbados is accredited to Grenada <i>embassy:</i> Point Salines, Saint George's <i>mailing address:</i> P. O. Box 54, Saint George's, Grenada, West Indies <i>telephone:</i> [1] (473) 444-1173 through 1176 <i>FAX:</i> [1] (473) 444-4820
Flag description:	a rectangle divided diagonally into yellow triangles (top and bottom) and green triangles (hoist side and outer side), with a red border around the flag; there are seven yellow, five-pointed stars with three centered in the top red border, three centered in the bottom red border, and one on a red disk superimposed at the center of the flag; there is also a symbolic nutmeg pod on the hoist-side triangle (Grenada is the world's second-largest

producer of nutmeg, after Indonesia); the seven stars represent the seven administrative divisions

Economy	Grenada
Economy - overview:	Grenada relies on tourism as its main source of foreign exchange, especially since the construction of an international airport in 1985. Strong performances in construction and manufacturing, together with the development of an offshore financial industry, have also contributed to growth in national output.
GDP:	purchasing power parity - \$440 million (2002 est.)
GDP - real growth rate:	2.5% (2002 est.)
GDP - per capita:	purchasing power parity - \$5,000 (2002 est.)
GDP - composition by sector:	<i>agriculture: 7.7%</i> <i>industry: 23.9%</i> <i>services: 68.4% (2000)</i>
Population below poverty line:	32% (2000)
Household income or consumption by percentage share:	<i>lowest 10%: NA%</i> <i>highest 10%: NA%</i>
Inflation rate (consumer prices):	2.8% (2001 est.)
Labor force:	42,300 (1996)
Labor force - by occupation:	services 62%, agriculture 24%, industry 14% (1999 est.)
Unemployment rate:	12.5% (2000)
Budget:	<i>revenues: \$85.8 million</i> <i>expenditures: \$102.1 million, including capital expenditures of \$28 million (1997)</i>
Industries:	food and beverages, textiles, light assembly operations, tourism, construction

Industrial production growth rate:	0.7% (1997 est.)
Electricity - production:	138 million kWh (2001)
Electricity - production by source:	<i>fossil fuel:</i> 100% <i>hydro:</i> 0% <i>other:</i> 0% (2001) <i>nuclear:</i> 0%
Electricity - consumption:	128.3 million kWh (2001)
Electricity - exports:	0 kWh (2001)
Electricity - imports:	0 kWh (2001)
Oil - production:	0 bbl/day (2001 est.)
Oil - consumption:	1,000 bbl/day (2001 est.)
Oil - exports:	NA (2001)
Oil - imports:	NA (2001)
Agriculture - products:	bananas, cocoa, nutmeg, mace, citrus, avocados, root crops, sugarcane, corn, vegetables
Exports:	\$78 million (2000 est.)
Exports - commodities:	bananas, cocoa, nutmeg, fruit and vegetables, clothing, mace
Exports - partners:	Germany 14%, US 13.6%, Bangladesh 9.7%, Netherlands 8.6%, Saint Lucia 6.4%, Antigua and Barbuda 4.3%, France 4.1% (2002)
Imports:	\$270 million (2000 est.)
Imports - commodities:	food, manufactured goods, machinery, chemicals, fuel
Imports - partners:	US 30.7%, Trinidad and Tobago 27.3%, UK 4.4% (2002)
Debt - external:	\$196 million (2000)
Economic aid -	\$8.3 million (1995)

recipient:

Currency: East Caribbean dollar (XCD)

Currency code: XCD

Exchange rates: East Caribbean dollars per US dollar - 2.7 (2002), 2.7 (2001), 2.7 (2000), 2.7 (1999), 2.7 (1998)

Fiscal year: calendar year

Communications	Grenada
-----------------------	----------------

Telephones - main lines in use: 27,000 (1997)

Telephones - mobile cellular: 976 (1997)

Telephone system: *general assessment:* automatic, islandwide telephone system
domestic: interisland VHF and UHF radiotelephone links
international: new SHF radiotelephone links to Trinidad and Tobago and Saint Vincent; VHF and UHF radio links to Trinidad

Radio broadcast stations: AM 2, FM 13, shortwave 0 (1998)

Radios: 57,000 (1997)

Television broadcast stations: 2 (1997)

Televisions: 33,000 (1997)

Internet country code: .gd

Internet Service Providers (ISPs): 14 (2000)

Internet users: 5,200 (2002)

Transportation	Grenada
-----------------------	----------------

Railways: 0 km

Highways: *total:* 1,040 km
paved: 638 km
unpaved: 402 km (1999 est.)

Waterways: none

Ports and harbors: Grenville, Saint George's

Merchant marine: none (2002 est.)

Airports: 3 (2002)

Airports - with paved runways: *total:* 3
2,438 to 3,047 m: 1
1,524 to 2,437 m: 1
under 914 m: 1 (2002)

Military	Grenada
----------	---------

Military branches: Royal Grenada Police Force, Coast Guard

Military expenditures - dollar figure: \$NA

Military expenditures - percent of GDP: NA%

Transnational Issues	Grenada
----------------------	---------

Disputes - international: none

Illicit drugs: small-scale cannabis cultivation; lesser transshipment point for marijuana and cocaine to US

This page was last updated on 18 December, 2003



CCA CRUISE OF THE GRENADINES AND GRENADA

SUPPLEMENT TO CRUISE BOOK

List of Participants

Defiant (Don McGraw, Doug MacLeod, Helen Brown, Bill Cook, John Osmond, Ellyn Osmond, John Doty) will not be participating. *Defiant* encountered high seas and returned to Miami.

Gus and Carol Hancock will be aboard *Cloud Nine*.

Hound (Frank Eberhart and 6 crew as yet unidentified), will “probably” be joining the cruise.

Daily Events

1. Wednesday, March 17

- Procedures for clearing customs

We have made special arrangements with Grenada Customs to clear customs in Tyrrel Bay, Carriacou, Grenada.

You should arrive in Tyrrel Bay **no later than 1500** and proceed to the Carriacou Yacht Club (see chart on p. 14 of the Cruise Book), where a customs officer will be available to clear you in.

Each captain must present a clearance form from his last port of call. **This means you must clear out of St. Vincent before proceeding to Carriacou. You can clear at Bequia and at Union Island.**

You will be asked for 3 copies of a list of crew and passengers for customs, and 2 copies for immigration (5 copies in total)

Each captain must complete a Grenada customs clearance form (it will be provided by Customs).

You will have to pay a cruising permit fee:

Yacht Length	Fee
0-40 feet	EC \$50
40-60 feet	EC \$75
60-80 feet	EC \$100
80+ feet	EC \$150

In addition, you must pay a Port Authority fee of EC \$8.10 per person aboard your yacht.

- **Gift Packs**

We will hand out gift packs of Grenada products at the dinner to be held on Wednesday evening at the Carriacou Yacht Club, including local Westerhall rum (great stuff!), spice baskets, jam/jelly baskets, local soap wraps, and a local cookbook. We will also provide you with a selection of brochures from local businesses.

2. Thursday, March 18

At the conclusion of the Cruising Race (or after you sail down without racing), we suggest that the fleet proceed to **Mount Hartman Bay rather than Prickly Bay** for an optional raft-up. Directions for entering Mount Hartman Bay are found in the Doyle Guide; it is the bay next eastward from Prickly Bay.

Spice Island Marine in Prickly Bay has moved, and their bar and restaurant are not yet built. Martin's Marina (formerly Secret Harbor owned by The Moorings, and recently purchased by a new owner), has an informal barbecue at the Rum Squall Bar on Friday evenings. Local restaurants can easily be reached by cab from Martin's Marina.

Mount Hartman Bay has plenty of space for anchoring, and moorings and dockage are available. Anita Sutton will be at our Carriacou event on Wednesday night and can make marina bookings for you.

3. Friday, March 19

Grenada Events -- YOU MUST SIGN UP AT REGISTRATION IN CANOUAN FOR THE FOLLOWING TOURS SO THAT THE NECESSARY ARRANGMENTS CAN BE MADE.

- Tours of Grenada – Please pay Anita Sutton, our Grenada agent, who will be present at the commencement of the tours

Henry Safari Tours – Mr. Henry has a number of modern, air conditioned vehicles with varying seating capacity so can accommodate any size group. He is reported to have knowledgeable, courteous and friendly drivers/guides.

- Full Day Tour (US\$35 per person)

9am – 5.00/5.30pm, pickup & drop off at Martin's Marina in Mount Hartman Bay and True Blue (details regarding the pick-up location will be provided at the dinner on Carriacou on Wednesday and in our morning vhf fleet call). This tour includes a traditional local lunch, and all entrance fees. Includes Concord Waterfall, a Spice Plantation, the Nutmeg processing plant at Gouyave, a rum distillery and Grand Etang lake in the Rainforest. We have arranged with Mr Henry that the Grenada Chocolate Factory also be included, with a chance to sample the local chocolate (highly recommended!).

- Half Day Tour (US\$28 per person)

9am – 3.00/3.30pm, pickup & drop off (see above for location). This tour includes a traditional light local lunch, and all entrance fees. It includes Concorde Waterfall, the Spice Plantation, the fishing village of Gouyave and Grand Etang Lake.

- Scuba Diving

We are arranging for a dive boat from Aquanauts at True Blue Bay. They have rental equipment and are reported to be excellent. They will need proof of certification. We will provide further information at the registration in Canouan and subsequently at the dinner in Carriacou and by morning radio report. Payment will be made directly to Aquanauts; we will not collect your payments.

4. Saturday, March 20

- St George's & Market Tour -- \$US 12

8.30am – 11.30/12noon, pickup and dropoff as above.

Will include a guided tour of the market with descriptions of the local produce on sale. After a time to browse, the group will be shown the Fort and other historic sites in St George's.

- Lunch and swimming/sunbathing at La Sagesse Nature Center

La Sagesse (transport price US\$10 per person, lunch price US\$15.50 per person, total US\$25.50) Payment will be made to Anita Sutton, our Grenada agent, on the day of the event.

12 noon – 17.00, pickup and dropoff as above

Lunch and an afternoon on one of the most beautiful rural beaches in Grenada. Perfect for sunbathing, with plenty of shade for relaxing and great swimming. For the more energetic, there are some lovely walks on the headlands either side of the beach.