



THE CRUISING CLUB OF AMERICA

TRUMAN S. CASNER
COMMODORE
54 FAIRGREEN PLACE
CHESTNUT HILL, MA 02467
(617) 951-7382 OFFICE
(617) 730-2959 HOME
(617) 951-7050 FAX
E-MAIL: tcasner@ropesgray.com

July, 2005

Dear Cruise Participants:

Welcome to the 2005 National Summer Cruise in Narragansett and Buzzards Bays. Rear Commodore Garry Fischer of the Boston Station and I are particularly pleased to have you in our home waters where there is almost always a good afternoon breeze to fill your sails and where you can enjoy countless beautiful harbors - all this and warm, swimmable water as well.

Our cruise chairs, Geoff Jenkins and Carrie Snyder Griffen, and their committee have put together a schedule of events that will allow you to explore the surrounding waters on your own and also rendezvous for well-planned events ashore. Please join me in thanking not only the cruise organizers but also our shoreside hosts: Doug MacLeod, New Bedford Yacht Club and Tabor Academy.

Enjoy the cruise and the company of your fellow members, their families and guests.

Sincerely yours,



Geoffrey H. Jenkins
Co-chairman
CCA Summer Cruise 2005
15 Glenbrook Road
Wellesley Hills, MA 02481
(781) 235 2879
Cell: (617) 285 2894
Email: ghjenkins@comcast.net

Carrie Snyder Griffen
Co-chairman
CCA Summer Cruise 2005
Cell: (617) 359 7540
Email: CarrieGriffen@mac.com

July 2005

Welcome to the 2005 CCA National Summer Cruise. It is a pleasure to share these beautiful waters with so many visiting and native club members. The cruise committee has chosen four interesting and fun event locations which reflect the diversity of these cruising grounds. The harbors of Bristol, Cuttyhunk, Padanaram and Marion have character and charm and provide an ideal backdrop for our cruise gatherings.

We invite you to explore some of the area's other scenic coves, harbors and islands in between our scheduled events. There's plenty to see and do!

Most of our venues this week are in settled waters, conducive to rafting our boats. Fenders over the side will invite new members or old friends to share a mooring and a convivial evening.

As co-chairs, we are most grateful to the many capable and enthusiastic CCA members (and spouses!) who have given unselfishly of their time and talent to help make this cruise a success. They have made the organizational task both manageable and fun.

Enjoy the cruise, and we look forward to seeing you on the water!

Geoff Jenkins

Carrie Griffen

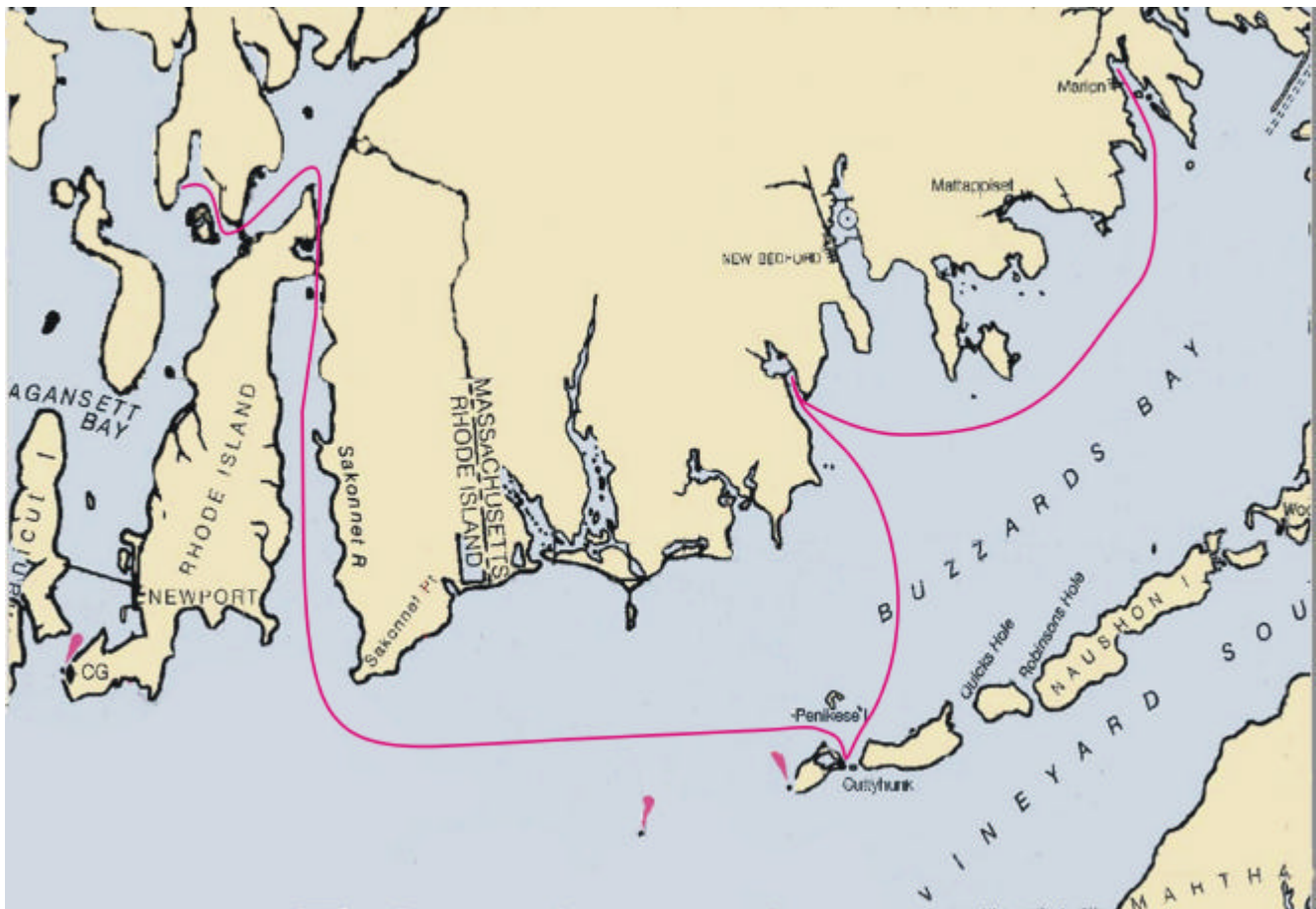
Contents

| | |
|---|------------|
| Cruise Route Map | 6 |
| Itinerary | 7 |
| Cruise Committee | 7 |
| General Information | |
| Cruise Essentials | 9 |
| Communications | |
| Weather Forecasts | |
| Trash & Pump-out | |
| Local Knowledge | |
| Flag Etiquette | |
| Event Tips | 10 |
| Registration/Event Tickets | |
| Cruise Book Updates | |
| Fun Race, Dress, Cruise Clothing | |
| Table Decorations, Rafting, Young Sailors | |
| Fish Trap Warning | |
| Charts and Cruising Guides | 12 |
| Medical & Emergency Contacts | 13 |
| Event & Destination Information, with chartlets | |
| Bristol Opening Clambake | 15 |
| Sakonnet to Cuttyhunk Fun Race | 21 |
| Cuttyhunk Beach Party | 23 |
| Padanaram Commodore's Cocktails/Barbecue | 29 |
| Marion Closing Dinner | 35 |
| Lyme Disease Fact Sheet | 40 |
| PARTICIPATING YACHTS AND CREWS | Blue pages |

Cruise Route

Narragansett and Buzzards Bays

July 9th – 17th



Bristol ♦ Cuttyhunk ♦ Padanaram ♦ Marion

2005 CCA Summer Cruise Itinerary

| | |
|---------------------------------------|---|
| Saturday, July 9th | Bristol, RI, Cruise Kickoff at Doug MacLeod's |
| 1200-1830 | Cruise registration |
| 1200-1600 | Not-your-average golf game at Hog Island |
| 1700-1830 | Raw bar served with beer, wine and rum keg punch |
| 1830-2100 | National Anthem, followed by clambake under the tent Kids' activities ashore |
| Sunday | Enjoy layday in Narragansett Bay |
| Monday, July 11th | Sakonnet River, RI |
| 1130 | Fun Race from the mouth of the Sakonnet to Cuttyhunk |
| | Cuttyhunk, MA |
| 1500-2018 | Dress ship |
| 1700-1900 | Open-air beach cocktail party, including beer, wine, rum keg, raw bar and hors d'oeuvres |
| Tuesday and Wednesday | Enjoy laydays in Buzzards Bay or Vineyard Sound |
| Thursday, July 14th | Padanaram, MA, at the New Bedford Yacht Club |
| 1700 | Commodore's cocktail party |
| 1830 | Barbecue dinner under the tent Kids' activities in the junior clubhouse |
| Friday and Saturday | Enjoy laydays in Buzzards Bay or Vineyard Sound |
| Sunday, July 17th | Marion, MA, Closing Event at Tabor Academy |
| 1700 | Cocktails |
| 1830 | Dinner & music indoors overlooking the harbor |

◆◆◆

Cruise Committee

| | |
|-----------------------|---------------------------------------|
| Commodore | Truman Casner, ex officio |
| Rear Commodore | Garry Fischer, Boston Station |
| Chairs | Geoff Jenkins & Carrie Snyder Griffen |
| Secretary & Treasurer | Jay Gowell |
| Event Captains: | |
| Bristol | Norm MacLeod |
| Cuttyhunk | Richard Casner |
| Padanaram | Arthur Burke |
| Marion | Sam Gray |
| Fun Race | Dorsey & Bruce Beard |
| Registration | Steve Thurston |
| Cruise Book Editors | Mimi Dyer & M.E. Taylor |

Cruise Essentials

Communications

VHF communications should be excellent everywhere and cellular communications are generally good in the cruise area as well. Members of the cruise committee will monitor 72 VHF every morning from 0800-0830. **Cruise announcements**, if any, will be broadcast daily at 0815. The cruise chairs can be reached aboard their boats by cell phone if necessary. Call Geoff Jenkins at 617-285-2894 or Carrie Griffen at 617-359-7540.

Weather Forecasts

Weather forecasts are available on VHF weather stations WX 1 and 2. Also, WPRO – 630AM from Providence, RI, broadcasts weather on the hour.

Trash and Pump-Out

Trash collection spots are listed under each event site, as are pump-out facilities. Please note that our cruising area is a no-discharge zone for marine toilets.

Local Knowledge

Do check the event information sections (as well as your chosen cruise guide) for harbor particulars. In general, underwater obstructions are well-charted, holding is good, and the tide range is a moderate 3-4 feet. *Eldridge (Tide & Pilot Book)* will be useful for making the most of currents along the coast and between the islands.

Mid-July normally offers light air in the area of our cruise. An afternoon southwest sea breeze on clear, hot, dry days is announced by the cumulus building along the shore. Nights are usually calm, with the exception of an occasional thunderstorm, which has been known to provoke an anchor drill.

Flag Etiquette

Cruise participants are reminded that we will be observing flag etiquette as outlined in the *CCA Yearbook*. Morning colors will be made at 0800, and evening colors will be struck at sundown, marked by a one-gun signal.

Event Information Chartlets

Along with information about the organized cruise events in this book, you will find a chartlet to serve as a guide to locating services, as well as our gatherings, ashore. You've no doubt read this particular disclaimer before: these chartlets are not intended to be used for navigation.

Event Tips

Registration/Event Tickets

Cruise portfolios, including name tags, will be distributed at the cruise registration and hospitality desk in the hours before the opening clambake at Bristol from 1200 to 1830. Your name tag will be your ticket to all cruise gatherings, so please be sure to wear it to the events ashore. This will be most helpful to your cruise committee.

Cruise Book Updates

This cruise book will serve as a guide to the various events organized by the committee. Kindly check the pocket in the back inside cover of this book for any changes to the scheduled activities that have been made since this book went to press.

Fun Race

For those interested, a Fun Race is scheduled for Monday, July 11 from the mouth of the Sakonnet River to Cuttyhunk. You'll find the Notice of Race in the event information section of this book – and it is a must-read, whether or not you intend to participate! The sailing instructions and scratch sheets will be available at cruise registration in Bristol.

Dress

We will be decidedly casual for most of the cruise – clambake casual at Bristol, beach casual at Cuttyhunk, smart casual at Padanaram. Those three events will be outdoors and/or under a tent. Our closing dinner at Marion, served indoors, will be the one occasion for pulling that blazer and tie out of the hanging locker; ladies will most likely be wearing something festive and a *bit* on the dressy side.

Air temperatures are comfortably in the 70s and 80s for the most part during the day. Evenings often bring a refreshingly cool breeze, so consider taking an extra sweater or windbreaker when coming ashore for evening events.

Cruise Clothing

Some attractive and fun items for the 2005 Summer Cruise are available via the CCA web site (www.cruisingclub.org), members only section. Choose from polo shirts, caps, etc., monogrammed with the summer cruise whale tail logo.



Table Decorations

The small CCA burgees incorporated in table décor are needed for all three dinner events. Please help us by leaving them for collection by your cruise committee. Thanks!

Rafting

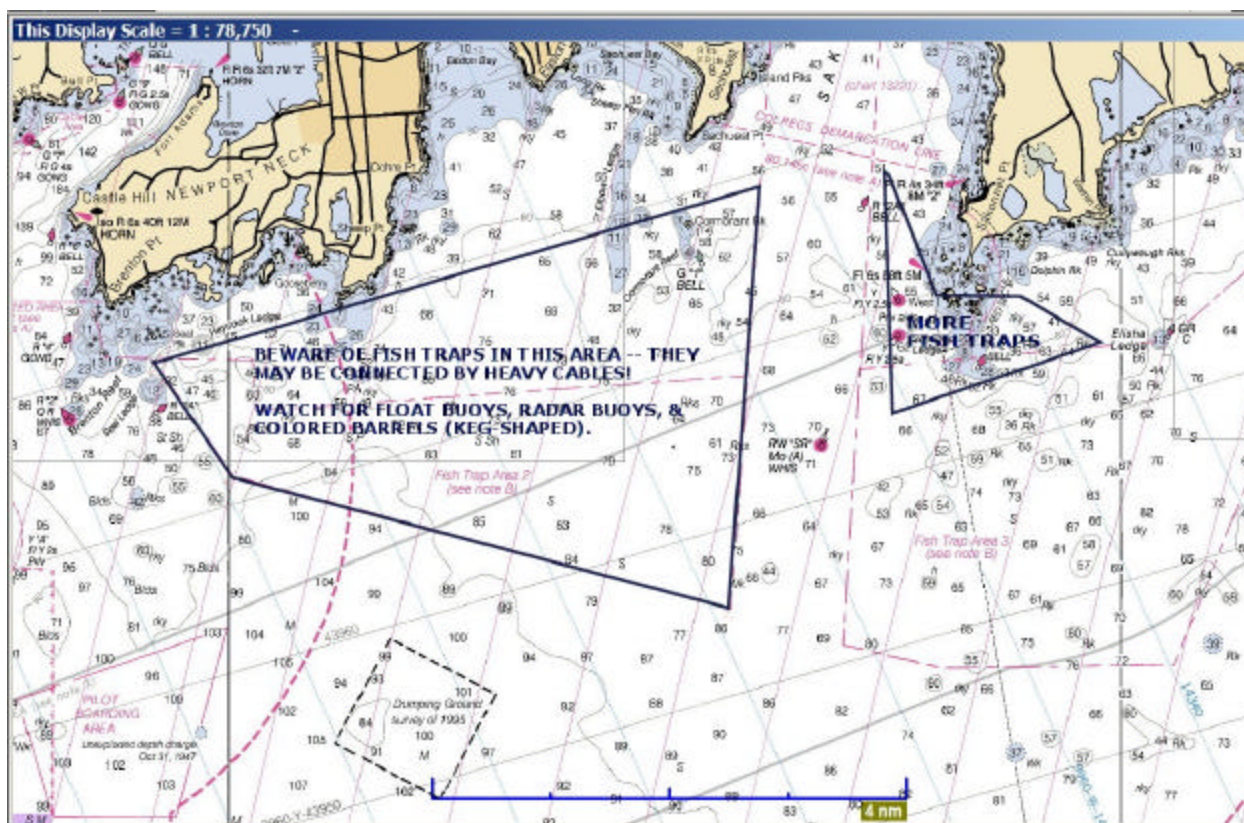
Rafting is permitted in all our event harbors, to a maximum of three boats, weather permitting. Fenders over the side signal a welcome to incoming CCA boats, and will help make best use of available moorings. *Note:* Padanaram's harbormaster will have a plan to accommodate our entire fleet and we will leave the rafting of boats to his discretion.

Young Sailors

There are activities planned for the children who have joined us on this cruise at the opening event in Bristol, RI, and again in Padanaram, MA, at the New Bedford Yacht Club's junior clubhouse. In addition, children are welcome at all of the shoreside events during the cruise, where they will find kid-friendly food.

Fish Traps

Just off Newport Neck and the mouth of the Sakonnet River, you may encounter a series of fish traps that are not kind to vessels with keels or propellers. Be on the lookout for keg-shaped barrels at the surface connected by heavy wire cables. Chart 13218 also notes fish traps in this vicinity. The chartlet below illustrates the approximate location of fish traps as reported by CCA members during May of 2005. Be alert!



Charts and Cruising Guides

Charts

- 13221 Narragansett Bay (includes the Sakonnet River, with Sachuest)
- 13224 Providence River and Head of Narragansett Bay (includes Bristol)
- 13223 Narragansett Bay, including Newport Harbor
- 13218 Martha's Vineyard to Block Island
- 13230 Buzzards Bay & Quicks Hole
- 13232 New Bedford Harbor & Approaches
- 13235 Woods Hole
- 13233 Martha's Vineyard (insert: Menemsha Pond)

All of the above charts are \$21.35 per chart. They are print-on-demand charts that are printed and corrected to within 2 weeks of purchase.

13229 Small Craft Chart: South Coast of Cape Cod and Buzzards Bay, Ed. 28 (includes detail of Cuttyhunk, Padanaram and Marion) \$18.75

Maptech Region 2 Chartkit: Block Island to the Canadian Border, 12th ed. with CD \$129

Maptech Waterproof Chartbook: Block Island to Cape Cod (Narragansett Bay, Buzzards Bay, S. Cape & the Islands) Ed. 2 \$49.95

Electronic Charts are available for this area as well by Garmin, C-Map, Navionics, Maptech and Nobeltec. Please specify plotter type or navigation software program when ordering.

Cruising Guides

- Narragansett Bay and the South Coast of Massachusetts by Childress & Martin \$37.95
- Cruising Guide to the New England Coast by Duncan & Ware \$49.95
- Embassy Guide to the New England Coast by Maptech 2005 \$44.95
- Northern Waterway Guide 2005 \$39.95
- GPS Waypoint Guide: Point Judith, RI to Nantucket, MA \$38.95
- Guide to New England Marinas by Atlantic Cruising Club \$24.95
- Reed's Nautical Almanac East Coast 2005 \$31.95
- Eldridge Tide & Pilot Book 2005 \$11.95
- Coast of New England: Connecticut to Maine by S. Patey \$49.95 (not a cruising guide, but has GREAT aerial and other photos of local harbors, rivers, inlets, and islands)

Prepared by Armchair Sailor Books and Charts, Newport, RI
1-800-29CHART, or 401-847-4252 or www.bluewaterweb.com

Medical and Emergency Contacts

Remember that in any medical situation, time may be of the essence. If afloat, hail or call the Coast Guard. If ashore, call 911 or a medical facility directly.

Afloat

VHF channel 16 or, on single sideband, 2182 KHz: Hail “Coast Guard Group Woods Hole” and/or call “Mayday; Pan-Pan” or call 508-457-3211 to reach the CG Woods Hole station by phone.

For a medical or boat emergency, Coast Guard Woods Hole will dispatch a vessel from the nearest station, and can evacuate if needed. The station covers from Plymouth, MA to Watch Hill, RI – the coastline and islands to 50 miles out (and beyond, if necessary).

Ashore

If an emergency occurs while ashore or berthed in a slip, call 911. Calls made to 911 on cell phones are generally handled by a State Police dispatcher then transferred to the appropriate local authorities.

If you are seeking non-emergency help, the following hospitals are nearest our cruise events:

| Narragansett Bay venues | | |
|---|-----------------------------------|--------------|
| Bristol | Rhode Island Hospital, Providence | 401-444-4000 |
| Sachuest, E. Passage and Sakonnet River | Newport Hospital, Newport | 401-846-6400 |
| West Passage | South County Hospital, Wakefield | 401-782-8000 |
| Buzzards Bay venues | | |
| Cuttyhunk and Padanaram | St. Luke’s Hospital, New Bedford | 508-997-1515 |
| Marion | Tobey Hospital, Wareham | 508-295-0880 |

CCA Fleet Surgeon (and Boston Station RC) Garry Fischer expects to be participating in the cruise aboard his boat, *Diva*, and will offer “informal advice” if requested.

Boat Towing Assistance

The local operator of Sea Tow is based in Cuttyhunk, MA, 1-800-473-2869.

A Note on Lyme Disease

Deer ticks, considerably smaller than the more common wood ticks, are frequently found in wooded and grassy areas ashore in these cruising grounds. A fact sheet from the Massachusetts Department of Public Health is available at the end of the white pages of this cruise book on page 40. It contains information on how to guard against Lyme disease, as well as how to recognize its symptoms and get help.

Cruise Kickoff & Clambake

Event captain: Norm MacLeod

BRISTOL, RI

Saturday, July 9th

At Doug MacLeod's Popasquash Point home

1200-1830 Registration
1200-1600 Not-your-average golf game (Hog Island)
1700-1830 Raw bar, beer, wine and rum keg punch
1830-2100 National Anthem,
followed by catered clambake under the tent
Kids' activities ashore

| | |
|-----------|------|
| High Tide | 1050 |
| Low Tide | 1554 |
| Sunrise | 0520 |
| Sunset | 2021 |

We've planned a great start to our summer cruise with yet another CCA clambake on Doug MacLeod's magnificently-situated lawn. These very special events have achieved "tradition" status in our club. *Thanks once again, Doug, for your hospitality!*

Approaches

Those coming from the east who may be thinking of sailing up the Sakonnet River to Bristol should note that a fixed highway bridge at Tiverton has a 65' vertical clearance. In addition, note the chartlet on page 11 that highlights an area of fish traps that pose a particular hazard to navigation when approaching Narragansett Bay.

Entering the Harbor

Bristol Harbor opens wide with Hog Island in the middle between Popasquash Point and Bristol Point. The waters around Hog Island are rocky and shallow, and the shoals extend out to the channel markers. Be sure to heed the buoys in this area, and be cautious if approaching the island itself. Doug MacLeod's white dock will be clearly visible on the eastern side of Popasquash Point, on the western shore of Bristol Harbor. Doug's dock is the third dock from the south end of Popasquash Point, which is marked by RG FL Bell at N41°38.75, W071°17.97. The coordinates for Doug's dock are approximately N41°39.15, W071°17.85.

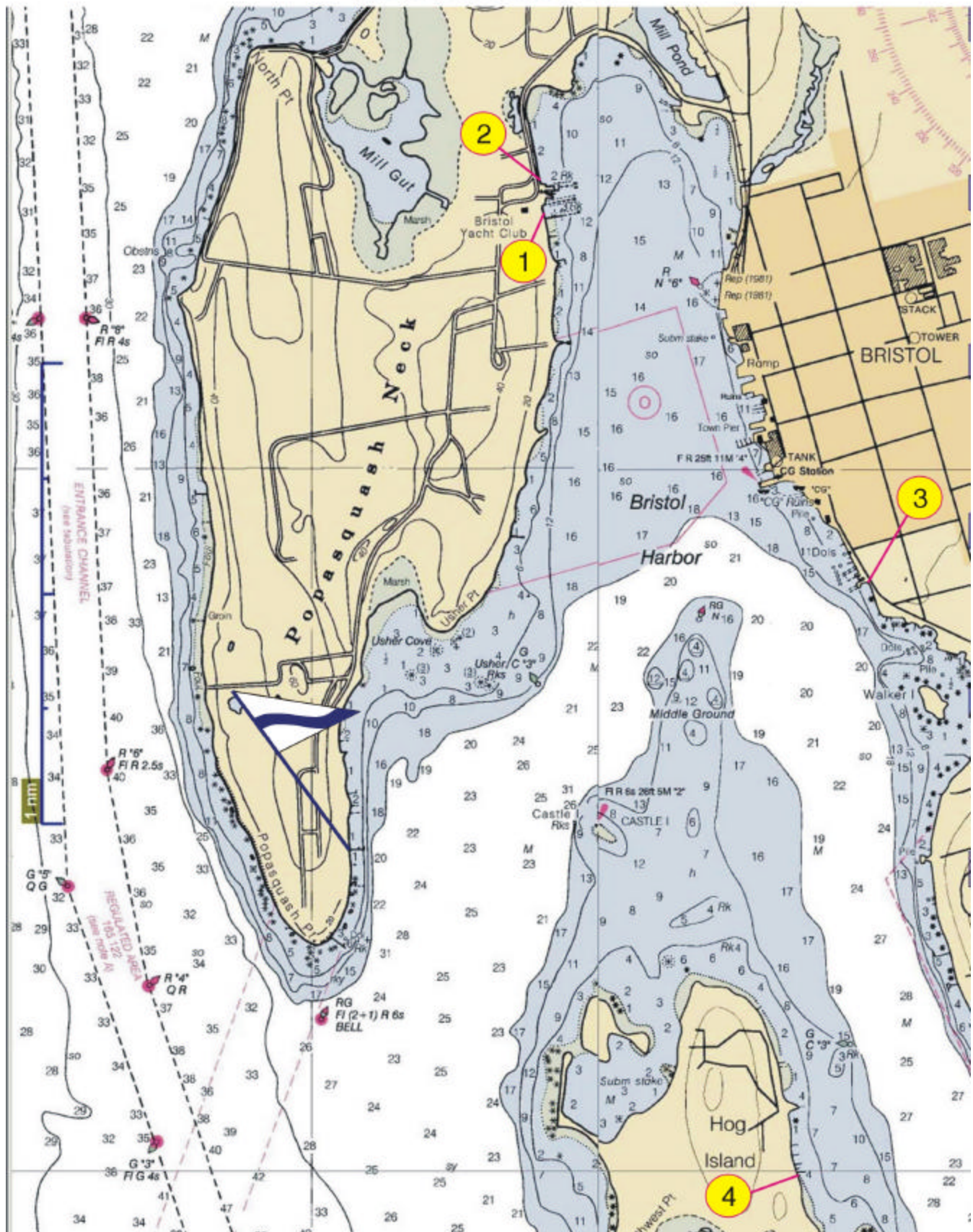
Anchorage

Anchorage for the event will be off the dock to the east, and to the north and south. There is a significant sandbar that begins at the shore side of the "L" at the end of the dock. The sandbar runs several hundred yards to the north and south.

An alternative anchorage area, protected from southwest through northwest, would be on the east side of Hog Island.

***Note:** We'll have company in Bristol Harbor, which comes as no surprise during the summer season. Marblehead's Eastern Yacht Club, which has hosted many Boston Station events, will be gathering in the northern section of Bristol Harbor. While this will put some pressure on shoreside services, our two anchoring areas are separate, and enough facilities exist in nearby Portsmouth that, with a bit of planning, inconvenience should be minimal.*

Bristol Harbor



Hog Island Golf

The “rough” at Augusta National has nothing on this quaint island golf course with a unique set of rules on nearby Hog Island. Your host Whip Seaman will provide “vintage” clubs and ensure that a good time is had by all. Come register for the cruise at Popasquash early Saturday afternoon, then shuttle over to Hog Island to play a few holes.

Dress

Dress for the evening’s festivities, under the tent, is casual.

Young Cruisers

Activities have been planned for the youngsters ashore, as well as a kid-friendly dinner.

Getting Ashore

Launch service will be provided by the CCA on Saturday to transport members and their guests between their yachts and the dock at Doug MacLeod’s. There is also room for a number of dinghies on the dock. Once ashore, please visit the hospitality/registration desk to collect your name tags (which are your tickets for this and other events), and some other goodies as well.

Coming by Land to Bristol

Directions are contained at the end of this section on page 19. Note that, by land, the convention is “Poppasquash.” Nautical charts prefer “Popasquash.” However you spell it, it’s a great spot!

Facilities

Please note that while Eastern YC’s cruise will also be in Bristol Harbor, nearby Portsmouth has ample facilities and is also the place to go if you need fuel. Portsmouth is located south of Bristol, on the eastern shore of Narragansett Bay.

| Bristol Harbor | ID Num. | VHF Channel | Launch | Water | Fuel D/G * | Ice | Pump Out | Trash | Repair Service | Telephone |
|--|---------|-------------|--------|-------|------------|-----|----------|-------|-------------------|--------------|
| Bristol Yacht Club | 1 | 68 | | X | | X | | *** | | 401-253-2922 |
| Bristol Marine | 2 | 69 | | | | | | | All | 401-253-2200 |
| Bristol Harbormaster | | 16/17 ** | | | | | X | | | 401-253-1700 |
| Herreshoff Museum | 3 | 68 | | | | | | | | 401-253-5000 |
| CCA Launch | | 72 | X | | | | | | | |
| Golf/landing dock | 4 | | | | | | | | | |
| Portsmouth Harbor | | | | | | | | | | |
| Alden Yachts | | 71 | | X | D,G | X | X | X | X | 401-683-4200 |
| New England Boatworks | | 9 | | X | D,G | X | X | X | X | 401-683-6110 |
| Ship's Store & Rigging | | | | | | X | | | (marine supplies) | 401-683-0457 |
| E. Passage Yacht'g Ctr. | | 9 | | X | D,G | | | | | 401-683-4000 |
| Hinckley Yacht Services | | 9, 69 | | X | D | X | X | X | X | 401-683-7100 |
| * Fuel key: D=Diesel G=Gas; fuel is not available in Bristol; see Portsmouth locations | | | | | | | | | | |
| ** Use Ch. 14 when hailing harbormaster for pump-out; special pump-out hours Sat. and Sun., from 0800-1200 | | | | | | | | | | |
| ***Trash: A dumpster for trash will be available at Doug MacLeod's | | | | | | | | | | |
| Showers & heads available at East Passage, New England Boatworks and Hinckley | | | | | | | | | | |
| Laundry facilities available at East Passage and New England Boatworks | | | | | | | | | | |

Trash

In addition to the facilities noted in the table above, there will be a dumpster available at Doug MacLeod's to receive your trash.

Pump-out Services

Pump-out services are available from the Bristol harbormaster, who has added special hours this weekend to accommodate our fleet. Hail him on channel 14 when seeking a pump-out Saturday, 0800-1200 and again on Sunday, 0800-1200. Additionally, pump-out stations are available in Portsmouth (see table above).

Fuel, Water and Ice

Water and ice may be obtained at Bristol Yacht Club, which can be contacted via VHF channel 68. Calling ahead is recommended because of the presence of the Eastern YC this weekend. You will also find water and ice, along with gas and diesel, at locations in Portsmouth (see table).

Provisions, etc.

Convenience store: Pick N' Pay, 300 Hope St., between Constitution & Church Sts.

Supermarket: SeaBra, 1150 Hope St. (401-254-0644); 5-10 min. drive; Sat. 8-9, Sun. 8-8.

Liquor: Mt. Hope Liquor, 678 Hope St. (401-253-2291); 5 blocks N of Church St.; 5-10 min. walk; Sat. 9-9, Sun. 12-6.

Church Services

St. Michael's Episcopal, Sunday at 0800 and 1000.

399 Hope St. (401-253-7717); 1 block E of Thames up Church St.

First Congregational, Sunday at 1000.

281 High. St. (401-253-7288); 2 blocks E of Thames up Constitution St.

Our Lady of Mt. Carmel Roman Catholic, Sunday at 0730, 0900, 1030.

141 State St. (401-253-9449); Thames St. to Church St.

About Bristol

Across the water from Popasquash Point is the town of Bristol, home port to many fine racing yachts. The town also boasts some of the most beautiful colonial architecture in Narragansett Bay.

You can land your dinghy at the State Street town ramp, north of the ferry dock, or at the large, cement launching ramp at Independence Park (next door, to the north). The East Bay Bike Path winds from the park 15 miles north to India Point in Providence. This path provides boaters with a place to get off the boat to jog, bike, skate, or just stretch their legs. Families with little ones will enjoy the scenery, swings and slides at the town park just north of the ferry dock and Armory. Thames Street, with several restaurants and factories, runs along the waterfront. One block east is Hope Street, where you will find more restaurants and bakeries, as well as several other shops. Hope Street has red, white and blue stripes running down the middle, marking the route of the oldest Independence Day parade in the country.

South on Hope Street, at the intersection of Burnside Street, you will find the **Herreshoff Marine Museum** – you can't miss it, with the mast of an America's Cup trial horse towering overhead. The museum has a collection of more than 60 Herreshoff boats and memorabilia from the glory days of yacht design; across the street is the affiliated America's Cup Hall of Fame. Limited dockage may be available, and the museum monitors VHF channel 68. Showers and heads available. There is a dinghy dock as well. Open in July from 10-5 daily, except July 4th (401-253-5000). The Herreshoff Museum is **truly a must-see** for yachting design and history buffs...and who among us isn't?

Off-Path Anchorages

Interesting anchorages in Narragansett Bay include Potter's Cove, located in the middle of the Narragansett Bay National Estuarine Sanctuary, and farther to the south, Dutch Harbor, Jamestown/Conanicut Island. In the Sakonnet River, Fogland is pleasant in settled weather, on the way south to Third Beach, in Middletown.



Coming by Land to Doug MacLeod's, 461 Poppasquash Rd., Bristol

From the west (CT, NY) - On Rte. 95 N in Providence, take exit for 195 East and follow to Rte. 136, Exit 2 toward Warren/Newport. Continue approximately 4 miles and take slight right onto Metacom Ave. Travel 2 miles and turn right onto Gooding Ave., travel to end and turn left onto Hope St. (Rte. 114). Travel 1.5 miles and take right onto Poppasquash Rd. (*) Follow until you reach a fork - bear right and stop at gate/security. Continue through gate, will pass Courageous Circle on right (stay left); #461 will be 4th driveway on left.

From the east and north (Boston & Cape) - Take Rte. 24 South in Fall River (Exit 8A from Rte. 195 W.). Take Exit 2 (Bristol/Mt. Hope Bridge) and take right onto Boyd's Lane, continuing to the Mt. Hope Bridge. Cross bridge (this is Rte. 114/Hope St.), stay in left lane and bear slightly left to stay on Rte. 114/Hope St., continuing through town. Will pass Herreshoff Marine Museum on right, then will be downtown (post office on left). Next you will see Mobil station on right, and head of harbor on left. Poppasquash Rd. is next left, follow from (*) above.

Fun Race

SAKONNET TO CUTTYHUNK

Event captains: Dorsey & Bruce Beard

Monday, July 11th

Start 1130 West of Sakonnet Point

Finish Cuttyhunk Harbor

| | |
|-----------|------|
| High Tide | 1144 |
| Low Tide | 1706 |
| Sunrise | 0522 |
| Sunset | 2020 |

Bring your sense of humor and your seamanship skills to “race” from the entrance of the Sakonnet River to Cuttyhunk!

Notice of Race

Start: Monday, July 11, 1130 hrs, in the vicinity of R “2A” bell west of Sakonnet Point.

Finish: Cuttyhunk Harbor, east of N “4” off Pease Ledge.

Sailing Instructions & Scratch Sheet: Sailing instructions and a fleet scratch sheet will be distributed at the cruise registration, and will also be available on the CCA web site by Tuesday, July 5.

Approaches: The Sakonnet River is lovely, especially in settled weather. Note that if you elect to make the run down the river from Mount Hope Bay or Bristol, you should be aware of the 65’ max vertical clearance of the fixed bridge at “The Hummocks” and Tiverton. Failure to do so may result in a yacht handicap not adequately accounted for in the scratch sheet. You might also note potentially swift currents in the narrow passage at Almy Point. If the weather is pleasant, yachts may wish to visit the Sakonnet River on Sunday, and overnight at either Fogland Point or Third Beach. Swimming is especially refreshing at Third Beach, and the Sachuest Point National Wildlife Refuge and Norman Bird Sanctuary make for nice walks. Details on these and other activities are well-covered in *A Cruising Guide to Narragansett Bay and the South Coast of Massachusetts*, Childress & Martin.

Race Management and Rules: Race management will be determined after the rum keg is opened on the first night of the cruise, probably by impressments of those who have had too much rum to duck the assignment. As for rules: there won’t be many, and they may be made up as the race progresses.

Yacht Eligibility: All yachts entered in the cruise, including motor yachts and sailing yachts, are eligible and encouraged. Dinghies, if racing, must be accompanied by a mother ship. Non-CCA-cruise yachts on the race course may be considered competitors only if you can pass them under sail.

Crew Eligibility: Pretty much anyone taking part in the cruise is eligible to race. Preference will be given to those under eight years old and over 80 years old. Ineligibility may be declared by Doug MacLeod for anyone misbehaving at his party on Saturday night. Professional sailors may participate but must sit forward of the mast or in a towed dinghy at all times.

Safety Requirements: All yachts that have sailed in a Bermuda Race must meet ISAF Special Regs for Category 1 events. All yachts that have not sailed in a Bermuda Race must meet minimum Coast Guard standards. All yachts must have a tender available to them somehow during the day. Life rafts do not qualify as tenders.

Divisions: Racing divisions will be established and announced at cruise registration based on entries received.

Entry Process: All vessels entered in the cruise will be pre-registered for the race. Handicaps will be adjusted in favor of those who enter early. Race entry will be confirmed at registration. Late entries will be entertained depending on the creativity of the excuse. The scratch sheet may be adjusted up until the start of the awards ceremony at Cuttyhunk.

Check-In: Check-in will be Monday morning between 1100 and 1115 on the water. Check-in instructions will be detailed in the sailing instructions.

Ratings & Scoring: Yacht ratings will be established at the discretion of the race committee and distributed at cruise registration. Appeals of yacht ratings will be accepted after the race concludes, and will be considered by a committee made up of those who won their divisions based on corrected time.

Misconduct: The race committee may disqualify anyone who fails to observe proper yacht etiquette and sportsmanship appropriate to the event. Cheating may or may not be considered misconduct, depending on who cheats.

Prizes: Prizes will be established by the race committee depending on: what yachts enter, what people participate, what the sailing conditions are on the day of the race, and what events occur during the course of the race. Some prizes will be established prior to the start; others will be created during and after the race. Prizes *may* be awarded to those who do not participate, on a “special circumstances” basis.

Disclaimer: Skippers who believe they must adhere to all elements in this Notice of Race in order to participate may also wish to bid on the Newport Bridge that we will be selling at the beach party in Cuttyhunk. Beware: this is a **FUN** race.

Beach Party & Raw Bar

Event captain: Richard Casner

CUTTYHUNK, MA

Monday, July 11th

1500-2018 Dress Ship

1700-1900 Raw bar, hors d'oeuvres, chowder,
rum, wine and beer on the beach

| | |
|-----------|------|
| High Tide | 1158 |
| Low Tide | 1708 |

| | |
|---------|------|
| Sunrise | 0521 |
| Sunset | 2018 |

This island gem may not be far from the mainland in miles, but Cuttyhunk is a world away in attitude!

Approaches

Those unfamiliar with Canapitsit Channel, separating Cuttyhunk from Nashawena Island, are advised to use caution. The channel is narrow, riddled with rocks and subject to strong and fluky currents, making passage difficult without local knowledge.

Entering the Harbor

The harbor proper lies between Cuttyhunk and Nashawena Island to the east. To access the inner harbor or "Cuttyhunk Pond," follow a narrow dredged channel to the west to a basin populated with moorings. Stay in the middle of the channel.

Moorings, Anchorage and Slips

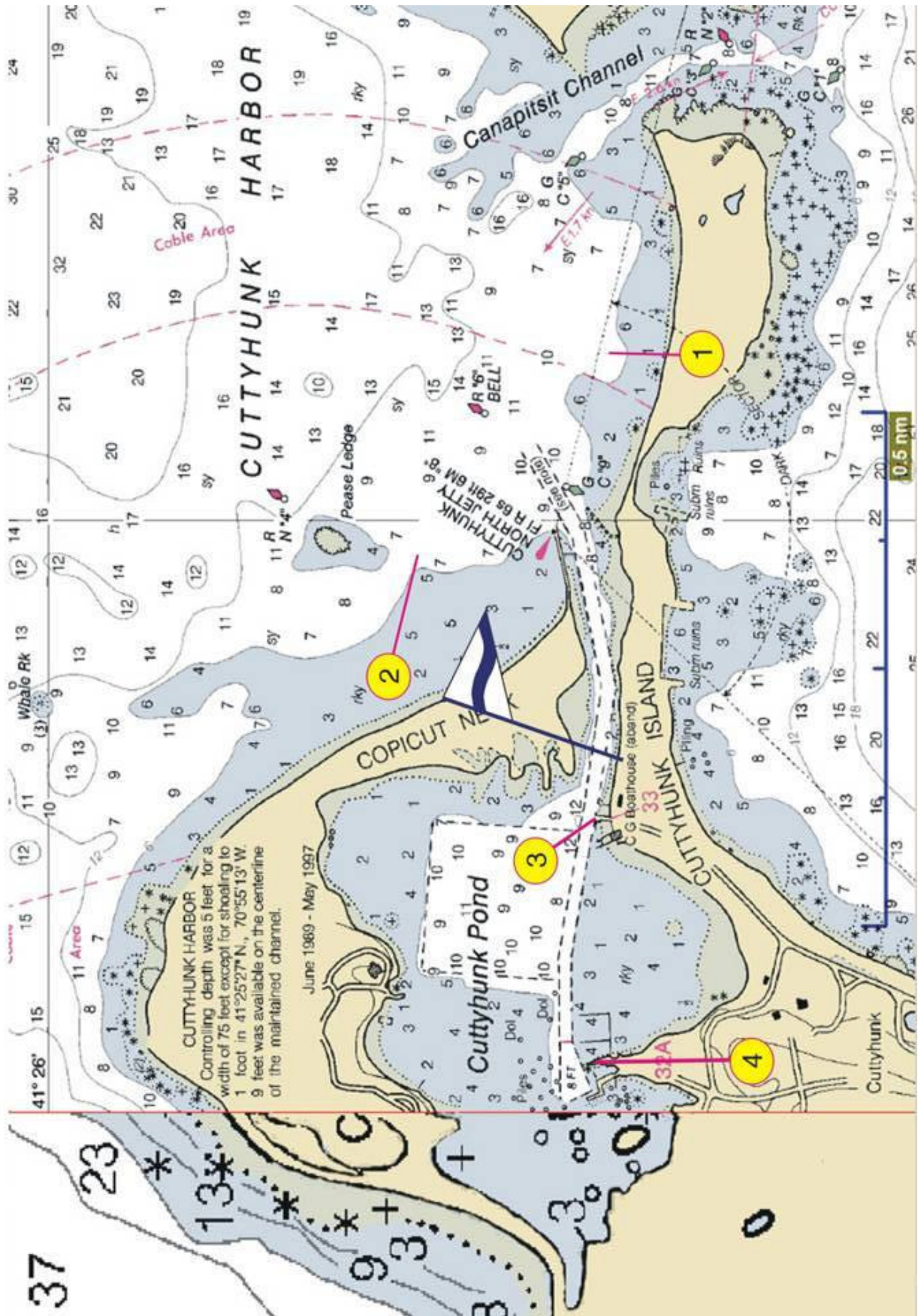
Both anchorages offer protection in the prevailing southwesterlies. However, the outer harbor is not the place to lie in northerlies or easterlies. Both anchorages have a good deal of eel grass, making the holding ground less-than-ideal.

Cuttyhunk Pond, or, "inside"

Town moorings are located in Cuttyhunk Pond and are available on a first-come, first-served basis. Those not planning to participate in the Fun Race may wish to sprint early for Cutty, as moorings are at a premium in summer and cannot be reserved in advance. Coming into the pond, you will pass the ferry dock and former Coast Guard station to port. Just past the Coast Guard dock, the cove to port is rocky and very shallow (sometimes bare at low tide); do not attempt to cut across it. Stay in the dredged areas (9-12 feet) as indicated on the chart. North of the channel, you will find 50 town-owned moorings. Use any available one. Three boats may raft on each mooring; fee is \$35/boat. The fee is normally collected by the harbormaster in the anchorage at 1800. Tonight, the harbormaster will collect for the town moorings at our beach party. Please remember your mooring number and fee when you come ashore.

There is some room to anchor north of the town mooring field. There may also be a limited number of slips available at the Town Wharf by reservation through the harbormaster. **Caution:** *The water outside of the dredged areas in the pond is very shallow.*

Cuttyhunk Harbor



Cuttyhunk Harbor, or, “outside”

We have reserved 25 moorings for Monday the 11th beginning at noon in the outer harbor, located along Canapitsit beach east of the harbor channel entrance. The reserved moorings are available to CCA members through Frog Pond Marine and will be assigned on a first-come, first-served basis. Contact Frog Pond Marine on channel 72 once you are in the harbor. Boats seeking one of these moorings should indicate they are associated with the cruise and fly their CCA burgee. We encourage rafting, conditions permitting. Fenders over the side will welcome fellow cruise participants to raft; feel free to come alongside a CCA boat with fenders in place. Three boats are permitted to raft on each mooring for a fee of \$35/boat.

Jenkins Moorings (no relation to our cruise chairman!) has a number of moorings in the outer harbor as well. These moorings are not subject to reservation but may also be available to our fleet on Monday evening. Hail on channel 9.

By Ferry

Ferry service is available from New Bedford via the *M/V Alert*. The ferry schedule can be found online at www.cuttyhunk.com or by phone at 508-992-1432. *Note:* As of June, 2005, Bayside Air had no plans to offer flights to Cuttyhunk.

Dressing Ship and Shipmates

The commodore requests that members of the fleet dress ship from 1500 to evening colors. As for shipmates, dress them in casual clothing. The event will be held on the beach, rain or shine.

Getting Ashore

Our gathering will be along the beach adjacent to the former Coast Guard station, catered by Seth Garfield's Cuttyhunk Shellfish Farms. Plan to come ashore by dinghy, landing either at the gravel beach near the Coast Guard station or at the public dinghy dock on Town Wharf. To reach Town Wharf, stay in the channel, then parallel the easternmost row of slips to avoid running aground at low tide, even in a dinghy. Once tied to the town dock, turn left onto “Broadway,” then take your first left and head east. A special thanks to Seth from the committee for his help in arranging our evening ashore here.

| Cuttyhunk Harbor | ID Num. | VHF Channel | Launch | Water | Fuel D/G ** | Ice | Pump Out *** | Trash | Telephone |
|--|---------|-------------|--------|-------|-------------|-----|--------------|-------|--------------|
| Harbormaster | | 9/16 | | | | | | | 508-990-7578 |
| Frog Pond Moorings* | 1 | 72 | | | | | | | 508-992-7478 |
| Jenkins Moorings | 2 | 9 | | | | | | | 508-996-9294 |
| Gosnold Fuel Service | 3 | | | | D,G | | | | |
| Town Wharf/Cuttyhunk Marine | 4 | 9/10 | | X | | | | X | 508-990-7578 |
| Save Buzzards Bay | | 9 | | | | | X | | |
| * These 25 outside moorings are reserved for CCA members on a first come, first served basis, Monday beginning at 1200 | | | | | | | | | |
| ** Fuel key: D=Diesel G=Gas | | | | | | | | | |
| *** See pump-out hours and hailing instructions in text | | | | | | | | | |

Trash

Limited trash services are available ashore at Cuttyhunk. Islanders would prefer that we take our trash to the mainland.

Pump-out Services

No discharge is permitted in Cuttyhunk Harbor. The CCA has arranged with the Coalition to Save Buzzards Bay to provide pump-out services as follows:

Monday (July 11), 0900 to 1100 and 1400 to 1600

Tuesday (July 12), 0900 to 1100

Hail "Bay Keeper" on channel 9 and service is free.

Fuel and Water

Fuel and water are available at Gosnold Fueling Service located on Narrows Wharf; water is available 24 hours a day. Maximum tie-up time is 20 minutes. Depth is 8 feet on the north side of Narrows Wharf dock.

Provisions, etc.

Cuttyhunk is a small island with limited facilities, all within a short walk from the town wharf.

General store: Island Market (on the left as you head uphill on Broadway) has limited provisions.

Gifts, crafts & coffee: The Corner Store is worth a stop while strolling the island.

Pizza, sandwiches: Call Sopranos at 508-992-7530 or on VHF 72.

Newspapers: Nate's News

Bakery: Hole in the Wall has home-baked goods.

Chowder, shellfish: Cuttyhunk Shellfish Farms, on the wharf; lunch from 1100-1330; harbor raw bar delivery during evening hours, call VHF 72.

About Cuttyhunk

Cuttyhunk Island was discovered by Bartholomew Gosnold (the town is actually called Gosnold) in 1602. It is one of the 13 Elizabeth Islands that stretch westward from the elbow of the Cape. It sits six nautical miles off the coast of the historic whaling port of New Bedford, Massachusetts. Gosnold's account of his island discoveries in the New World (he also named Cape Cod and Martha's Vineyard) is said to have served as the basis for Shakespeare's play "The Tempest." Cuttyhunk Island - as the native Wampanoags called Pooquoitkunnah - is the westernmost of the Elizabeth Islands; most of the island chain is privately owned by the Forbes family. Cuttyhunk welcomes visits from the public - just not too many. In Melville's time, Cuttyhunk was a haven for whaling-boat pilots who guided boats through the waters of Buzzards Bay into New Bedford Harbor.

Today, the island is a quiet haven, where the principal occupations are sportfish guiding, lobstering and shellfishing, with some call for serving the needs of summer residents and visitors. The island's year-round population of 35 swells to about 300 in the summer, according to the latest count posted outside the island market. While friendly, residents are reluctant to turn their little slice of heaven into a tourist destination, so they offer the bare minimum in amenities.

Things to See and Do

The Cuttyhunk Historical Society is a seasonal museum open to the public. Their mission is to preserve the traditions, records and history of the Elizabeth Islands for the benefit of present and future generations. Located in the village, the museum is a short walk from the dock. Next to the Historical Society, you will find the town hall, library and one-room schoolhouse. There is no restaurant on the island, just some food carts on the wharf that offer sandwiches and fried foods in summer, an ice cream shop and a pastry shop. There is no shopping center, only the market, which provides groceries and sandwiches. There is no liquor store. In fact, Gosnold, the town which encompasses all of the Elizabeth Islands, is a dry town. A number of small art “galleries” have opened on the island. Just follow the signs ashore.

Taking a walk on Cuttyhunk is a treat. The road to Lookout Hill - which houses the Historical Society - leads to a hilltop picnic area where you'll find incredible sweeping views of the island's rolling hills of bayberry, as well as Buzzards Bay, Vineyard Sound and Gay Head on Martha's Vineyard.

On a hike to the West End, you will find remnants of WW II Coast Artillery observation stations, 90-mm gun batteries and fire control radar sites for the defenses of New Bedford and Narragansett Bay.

***Note:** If you do hike around the island, you should thoroughly check yourself and your children for any deer ticks on your return to the boat as this island has a sizable deer population. See page 40 for more information.*

Commodore's Cocktails and BBQ Dinner

PADANARAM, MA

Thursday, July 14th

Event captain: Arthur Burke

At the New Bedford Yacht Club

1700 Cocktails

1830 BBQ dinner under the tent

Kids' activities in the junior clubhouse

| | |
|-----------|------|
| High Tide | 1445 |
| Low Tide | 2012 |
| Sunrise | 0523 |
| Sunset | 2017 |

It is fitting that the CCA Commodore's cocktail party will take place in *Astral's* home port of Padanaram. The New Bedford Yacht Club, which will be our host for this evening's event, is home to a hospitable group of sailors who take full advantage of this superb location and the fresh afternoon Buzzards Bay breeze.

Entering the Harbor

The harbor, shown on charts as Apponagansett Bay, is recognized by a granite breakwater to starboard, marked with red #8. Proceed in a straight, wide fairway, marked by nuns 10 & 12. (There are no cans.) At #12, the fairway narrows and doglegs 40 degrees to starboard, leading to the New Bedford Yacht Club, Concordia Boats, Davis & Tripp Boat Yard, and the Padanaram swing bridge that allows passage to the inner, north harbor. This bridge opens by request over channel 13 on the hour between 0600 and 2100 daily. Average low-water harbor depth is 11.' The least depth in the fairway is 8'6", 300 yards northeast of #12. There is a half-knot current north of #12. Depth at NBYC north dock and floats varies from 12' on the north end to 5' on the south end.

Moorings, Anchorage, Slips

Transient slips: Contact NBYC, Concordia, or Davis & Tripp to learn of availability.

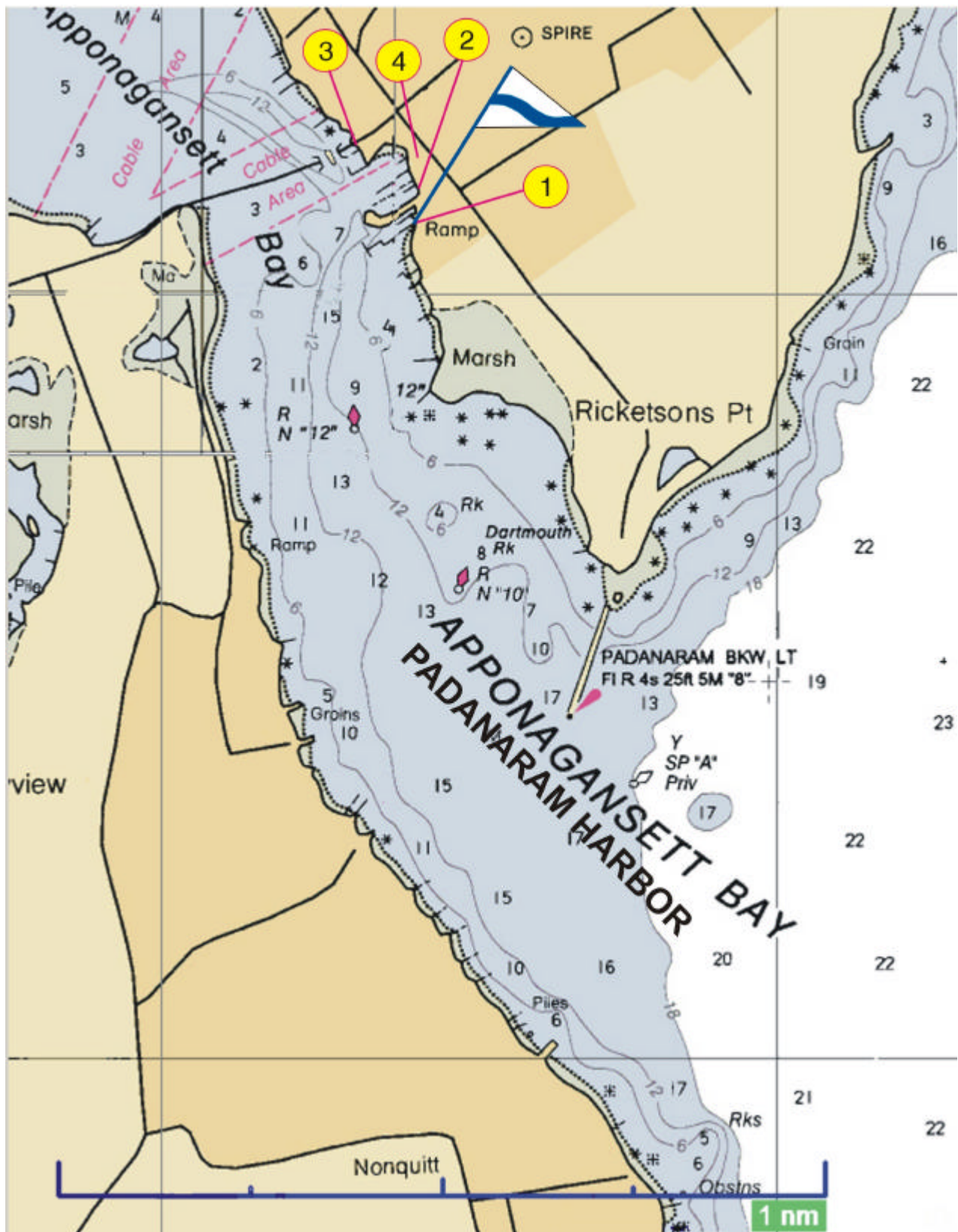
Moorings: Rafting allowed, conditions permitting, to be determined by NBYC and harbormaster. Burgee flying and fenders over the side will welcome fellow cruise participants to raft; feel free to come alongside a CCA boat with fenders in place. **Please note:** Call the harbormaster (channel 9) or NBYC (channel 68) for a mooring assignment once you are in the harbor. State your affiliation with the CCA cruise. Reservations cannot be made even from several hours out, but we have been assured that all will be accommodated. The NBYC mooring fee has been reduced from \$45 to \$20, courtesy of your cruise committee, for this evening.

Anchorage: The southwest corner of the harbor offers good holding ground, swinging room, and protection in settled summer weather.

Dress

Attire for tonight's event is "smart casual."

Padanaram Harbor



Getting Ashore

Call on channel 68 to hail the NBYC launch or to obtain directions to the dinghy dock. The CCA will provide an additional vessel, beginning at 1630 Thursday, for transportation to and from this evening's gathering.

Young Cruisers

Activities have been planned for the youngsters ashore, as well as a kid-friendly dinner.

Coming by Land

From Boston – Rte. 24 South to Rte. 140 South to the end at Rte. 6. Right on Rte. 6 to 1st lights at Bishop Stang High School. Left on Slocum Rd. for about 2½ miles. Left on Elm St. across from police station for about 1½ miles, through village to NBYC at 208 Elm St. on right.

From Providence or Cape Cod – Rte. I-195 (east or west) to Rte. 140 South to Rte. 6. Then follow above directions.

Facilities

The village of Padanaram is home to our host yacht club, two working boatyards and a sail loft. Please note that while we've included phone numbers here, cell phone coverage in Padanaram harbor and village is spotty, at best.

| Padanaram Harbor | ID Num. | VHF Channel | Launch * | Water | Fuel D/G ** | Ice | Pump Out | Trash | Repair Service | Telephone |
|---|---------|-------------|----------|-------|-------------|-----|----------|-------|----------------|--------------|
| New Bedford YC | 1 | 68 | X | X | D,G | X | | X | | 508-997-0762 |
| Concordia Boat Yard | 2 | 68 | | | P | | | | Full | 508-999-1381 |
| Davis & Tripp | 3 | 9 | | | | | | | Outbds | 508-993-9232 |
| Harbormaster | | 9 | | | | | X | | | 508-999-0759 |
| CCA Launch | | 68 | X | | | | | | | |
| Doyle Sails | 4 | 68 | | | | | | | X | 508-992-6322 |
| * Launch notes: NBYC & CCA launches shuttle between moorings and NBYC dinghy dock. | | | | | | | | | | |
| ** Fuel key: D=Diesel G=Gas P= Propane | | | | | | | | | | |
| New Bedford YC: Face Dock, at low water, depth progresses from 5' at S end to 12' at N end of face. | | | | | | | | | | |
| Showers & heads available at NBYC. | | | | | | | | | | |

Trash

Trash may be left in dumpsters in the parking lot of the New Bedford Yacht Club.

Pump-out Services

Padanaram's harbormaster provides free pump-out service at your mooring. Call 508-999-0759 or hail on channel 9.

Fuel, Water and Ice

Fuel and water, as well as ice, may be obtained at the New Bedford Yacht Club. The fuel dock is open 0800-1900.

Provisions, etc.

Basic groceries/meat/liquor: Village Market, 9 Bridge St., (508-992-0898); open 8-8.

Deli/take-away/bakery items: Cecily's Café, 6 Bridge St., (508-994-1162); open 6-8.

Supermarket: Stop & Shop, 438 Dartmouth St., 8-min. drive, (508-996-5090)

Laundry: Delken, 718 Dartmouth St., 5-min. drive, (508-992-9423) open Mon-Sat. 7-9; Sun, 8-6.

About Padanaram

This village, situated in the town of South Dartmouth, has attracted sailors for centuries. The region was called "Ponagansett" by the Wompanoags, a name that means "where the little waters enter the big waters." Padanaram and its environs were purchased from the Wompanoags in 1652. The earliest settlers were farmers from Plymouth colony. During the 18th century, the extraction of salt from the sea became a major occupation of residents. Eventually, the demands for support services from the shipbuilding and whaling industries in neighboring New Bedford brought new wealth to Padanaram. A wharf, shipyard and windmill were established in the village and all but the windmill remain today on Padanaram's working waterfront.

Padanaram is still a relatively humble place, spared the kind of development that has transformed coastal towns on Martha's Vineyard and Cape Cod into tourist destinations. Here, one finds a low-key, but welcoming yacht club, some basic supplies and a small village in which to poke around.

New Bedford Yacht Club (NBYC)

The New Bedford Yacht Club is a well-known and established sailing club, having been founded in 1868 with its clubhouse in New Bedford harbor. The Padanaram station opened in 1901. Over the years, its members have been intertwined with the history of yachting.

Currently the club is a large, multifaceted organization, with three docks, including a deep-water north dock, a clubhouse with restaurant and lounge, and an adjoining junior clubhouse. There is also ample parking and a separate boathouse. Given this wonderful combination of facilities, the club looks forward to being our host for this event.

In addition to an active fleet of homegrown racers, the club runs a large junior program. The NBYC hosts many local, regional and national sailing events, hosts the Buzzards Bay Regatta alternate years, and is the base of operations for the Dartmouth High School and Bishop Stang High School sailing teams, which use club 420s.

Things to See and Do

Padanaram's ties to the sea are evident in many of the businesses in the village today. An independent bookstore, The Navigator, on Elm Street is just a few blocks north of the yacht club and has a nice collection of nautical books. Along the way, an office occupied by marine photographer Norman Fortier is often open to the curious. Adjacent to Norm's place, The Packet sells clothing for men and women, along with home goods. Inside The Packet is a branch of the local post office. Further along Elm Street, Blue Bells offers antiques, country collectibles and gifts for adults and children alike. Doll house aficionados will enjoy The Woodhouse Shop. Flora is a florist shop that also sells unique housewares and other creative gifts. Kayaks can often be

rented from Village Ski & Sport at 354 Elm Street. There are several galleries in the village as well.

Breakfast and lunch can be found daily at the Village Café, 7 Bridge St., (508-984-1400), from 6:30 – 2; and dinner is served Monday, Thursday and Friday from 5-8. The Black Bass Grille, 3 Water St., (508-999-6975), is open Monday, 5-9; Tuesday through Thursday from 11-9; Saturday from 11-10 and Sunday from 9-9. The Dockside Ice Cream Shop on Bridge Street is practically a village institution. Service is not swift, but the ice cream is delicious and you will likely not find a less expensive frozen confection anywhere in coastal Massachusetts!

Off-path Anchorages

Consider a lunch stop on your way into Padanaram harbor. There's a sandy, crescent-shaped beach on the eastern shore of Smith Neck. Put your anchor down anywhere off the beach, north of Lazy Rock and south of the Barekneed Rocks, Keel Rock and the day mark.

Closing Dinner

Event captain: Sam Gray

MARION, MA

Sunday, July 17th

At Tabor Academy's waterfront dining hall

1700 Cocktails

1830 Dinner, with music

| | |
|-----------|------|
| Low Tide | 0959 |
| High Tide | 1717 |

| | |
|---------|------|
| Sunrise | 0524 |
| Sunset | 2015 |

Our final rendezvous will take place in this picturesque New England town surrounding a welcoming harbor, home to many CCA members. Tabor Academy will be our gracious hosts for a fabulous closing dinner this evening.

***Note:** Because Eastern Yacht Club's cruise will be in Marion Friday night as guests of Beverly Yacht Club, it is suggested that boats not come to Marion before Saturday.*

Entering the Harbor

On entering Sippican Harbor (the official name of Marion's harbor), keep the lighted red flashing buoy (and Ram Island) to starboard and keep Rock Island to port. The well-marked channel ends at the head of the harbor near Burr Brothers Boatyard. Note that the harbor is relatively shallow, with about 5 feet at low tide on the west side of the channel, 6-9 feet on the east side, and progressively less water farther north. The mooring area is east of the main channel; the center of town is west. Tabor Academy is located well down the harbor on the western side.

Mooring and Anchoring

On entering the harbor, please use channel 68 for assistance in finding mooring or anchorage space from Burr Brothers or Beverly Yacht Club. Please do not call before you are at the entrance of the harbor. Weather permitting, we have permission to raft three boats on each mooring. Burgee aloft and fenders over the side will welcome fellow cruise participants to raft; feel free to come alongside a CCA boat with fenders in place. The limited anchorage area is so marked by buoys and is to starboard immediately after entering the harbor. Burr Bros. mooring fee is \$30/boat. Beverly Yacht Club's fee will be \$30/boat for this cruise.

Getting Ashore

Tabor Academy's sailing dock may be used for dinghies for our event this evening. It is located right near the dining site and will be marked with a CCA burgee. In addition, launch service will be available through Beverly Yacht Club, Burr Brothers, and Tabor Academy for transport to and from the Tabor event. All monitor channel 68. If calling a launch on channel 68, identify as a CCA boat, give mooring number or location if anchored so that any available launch can respond. At other times during your stay, call BYC or Burr for launch service, or dinghy ashore.

Dress

Suggested dress is jacket and tie for the men, something festive and a *bit* on the dressy side for the ladies. We will be indoors this evening.

Coming by Land

From Boston - take Rte. 93 South (old Rte. 128), to Rte. 24 South to Rte. 495 South. Take Exit 1 off Rte. 495 onto Rte. 195 toward New Bedford. Take Exit 20 to Marion. Turn right at top of the ramp onto Rte. 105. Cross Rte. 6 at light. Tabor will be on your left in 0.5 miles at 66 Spring St.

From the west - take Rte. 195 from Providence or New Bedford. Take exit 20 toward Marion and follow directions above.

Facilities

You can find fuel, water, ice and other necessities for the boat in Marion.

| Marion Harbor | ID Num. | VHF Channel | Launch * | Water | Fuel D/G ** | Ice | Pump Out | Trash | Repair Service | Telephone |
|--|---------|-------------|----------|-------|-------------|-----|----------|-------|----------------|--------------|
| Tabor Academy Launch | 1 | 68 | X | | | | | | | |
| Burr Brothers Boats | 2 | 68 | X | X | D,G,P | X | | | X | 508-748-0541 |
| Marion Town Dock | 3 | | | X | | | | X | | |
| Barden's Boat Yard | 4 | 68 | | | | | | | X | 508-748-0250 |
| Marion Harbormaster | | 9,16 | | | | | X | | | 508-748-3535 |
| Beverly Yacht Club | 5 | 68 | X | | | X | | X | | 508-748-1800 |
| * Launch notes: BYC + Burr Bros. run regular launches and will assist, along with Tabor Academy, in shuttling to and from our event. | | | | | | | | | | |
| ** Fuel key: D=Diesel G=Gas P= Propane | | | | | | | | | | |
| Showers and heads: Beverly YC; and, if on a Burr's mooring, at Burr's Boat Yard | | | | | | | | | | |

There is also a West Marine Express at 354 Front St., about a half-mile from the waterfront at the intersection of Route 6, 508-748-3833, which carries a selection of marine products.

Trash

Trash dumpsters are available at Beverly Yacht Club and at the town dock, Island Wharf. Please leave trash enclosed in plastic bags. We have been asked not to take trash ashore at Tabor.

Pump-out Services

No discharge is permitted in Marion Harbor. For pump-out services, call the Marion harbormaster on channel 9 or telephone 508-748-3535. Pump-out service is free and can be done at the town dock at Island Wharf or at a mooring.

Fuel, Water and Ice

Fuel and water are available at Burr Brothers dock. Calling ahead on channel 68 is strongly recommended. **Note:** *The channel is quite narrow and moderately shallow near their dock. The deeper your draft, the greater the importance of being at least two hours away from low tide.*

Water is also available at the town dock at Island Wharf 24 hours a day. The facility takes quarters. Maximum tie-up time is 20 minutes. Depth is 7 feet on the north side of the town dock, 6 feet on the south side at low tide. Burr Brothers and Beverly Yacht Club offer ice.

Provisions, etc.

Groceries and Liquor: Marion General Store, 140 Front St., (508-748-0340), short walk;

Stop & Shop supermarkets in Fairhaven (508-990-4500) & Wareham (508-295-3377), 7 mi.

Spirits Liquor, 154 Front St., (508-748-0004), short walk

Laundry: Mayhew's, 434 Wareham Rd.; open 7:30 am-8 pm; (508-748-2353), long walk

Convenience stores: Christy's (Citgo) or Cumberland Farm (Gulf); ½ mile walk to Rte. 6

Church Services

St. Gabriel's Episcopal, 124 Front St. (508-748-1507); Sunday 0800 & 1000

St. Rita's Roman Catholic, 113 Front St. (508-748-1497); Sat. 1700, Sun. 0830 & 1000

First Congregational, 28 Main St. (508-748-1053); Sunday 1000

About Marion

Marion captures the essence of a New England coastal town. Houses in the village are reminiscent of a time long past, with old trees and white picket fences. There's still a general store in the village center, with a post office across the street. Marion is also home to Tabor Academy, a well-known prep school and the site of our cruise finale.

Shortly after the Pilgrims arrived in 1620, a charter was issued to the town of Rochester including the areas we now know as Rochester, Marion, Mattapoisett and parts of Wareham. The initial name of the village was Sippican, after the local Native American tribe.

During the early 1800s, Sippican/Marion was the home of sea captains and sailors. Sippican boys went to sea at 16 and worked their way up to become mates and captains. The captains carried cotton to Europe, cargoes to the Orient and returned with products from the East. Many became wealthy and some built magnificent homes, a few of which are still standing. Sippican also housed a small shipbuilding community that was kept busy rigging ships built in Mattapoisett and New Bedford.

Embroidered in local politics, the village broke away from Rochester in 1852. The townspeople named the new town Marion in honor of General Francis Marion, the Revolutionary War hero from South Carolina.

In the late 1800s, as whaling and shipbuilding waned, Marion became a summer resort. Grover Cleveland, our 22nd and 24th President (1885-89 and 1893-97) had a summer home here that retains the grace appropriate for a summer White House. Many prominent families built wonderful summer homes.

Today, with a population of 6,000, Marion is primarily a year-round residential community, with some light industry. Many residents work in nearby Fairhaven, New Bedford or Fall River, and some intrepid souls commute to Boston. Marion retains its focus on the sea, mainly through recreational boating.

Beverly Yacht Club

Beverly Yacht Club is one of the older and more distinguished yacht clubs in America. It was founded in 1872 by a group of sailors from Eastern Yacht Club who wanted to race smaller boats not recognized by their club. For 20 years, it had no home but ran races in waters that were convenient for its members from Marblehead to Quissett. The club finally settled down in 1895, leasing a house on Wings Neck. After relocating several times due to the ravages of hurricanes, Beverly Yacht Club moved to its current location in 1955.

Today it is an active club with vigorous small boat and PHRF racing fleets. Every other year it hosts the Marion-Bermuda Cruising Yacht Race and in alternate years hosts the Buzzards Bay Regatta.

Beverly Yacht Club has graciously offered to help us in any way possible. In addition to any moorings they have available, the yacht club has offered to make available to CCA members their showers (limited number) and grill & bar.

Things to See and Do

Marion is a small town with limited facilities. However, do stroll through the streets to see the 18th and 19th century houses in this historic seaside town. The Sippican Historical Society is located at 139 Front Street (508-748-1116), and you will find the Marion Art Center at the corner of Main and Pleasant (508-748-1266). Stores along Front Street offer food, spirits, books, antiques and gifts. Restaurants include The Wave at 210 Spring St. (508-748-2986), Sippican Café at 167 Spring St. (508-748-0176), and Uncle Jon's Café at 350 Front St. (508-748-0063).

Off-Path Anchorages

There are anchorages in Wing's Cove (limited) and Mattapoissett. The nearest snug harbor is probably Pocasset. Other lovely spots within an easy day sail abound; just let us know in which direction you're headed.

PUBLIC HEALTH FACT SHEET

Lyme Disease

Massachusetts Department of Public Health, 305 South Street, Jamaica Plain, MA 02130

What is Lyme disease?

Lyme disease is caused by bacteria that are spread by tiny infected ticks (in Massachusetts, by deer ticks). Both people and animals can be infected with Lyme disease.

Where is Lyme disease found?

Lyme disease is most commonly found along the East Coast, the upper Midwest and the valleys of the far West. In Massachusetts, deer ticks are found everywhere, but especially in coastal areas, the islands and the Connecticut River Valley. The disease is most likely to be spread between late May and early autumn, when ticks are most active.

How is Lyme disease spread?

Deer ticks cling to plants near the ground in brushy, wooded, or grassy places. The ticks, which cannot jump or fly, climb onto animals and people who brush against the plants. Very young ticks, called larvae, which are no bigger than the period at the end of a sentence, pick up the bacteria that cause Lyme disease by biting infected animals, such as field mice. Slightly older ticks, called nymphs, which are the size of a poppy seed, are the stage most likely to bite and infect humans. Adult deer ticks can also transmit the disease, but they are not as great a risk as nymphs because the adults are less likely to bite humans and they are easier to see and remove.

Ticks live for 2 years and can infect wild and domestic animals as well as people. Not all ticks carry Lyme disease, and even being bitten by a deer tick does not mean that you will always get the disease. The tick must usually be attached for at least 24 hours to pass on the bacteria, so removing the tick promptly will greatly decrease your chances of being infected.

What are the symptoms of Lyme disease?

Early stage (days to weeks): An early symptom of Lyme disease is usually, but not always, a rash where the tick was attached. The rash appears from 3 days to a month after the bite. It often starts as a small red area then spreads, clearing up in the center so it looks like a donut. However, the rash may not always appear like this. Flu-like symptoms, such as fever, headache, stiff neck, sore and aching muscles and joints, fatigue and swollen glands, are also common in the early stages of Lyme disease.

These early symptoms often go away by themselves after a few weeks, but the person may remain infected. Without medical treatment, about half the infected people will get the rash again in other places on their bodies, and many will experience more serious problems. Early treatment with antibiotics clears up the rash within days and usually prevents later problems.

Later stages (months to years): Three major organ systems--the joints, nervous system and heart--can be affected. People with Lyme disease can develop late-stage symptoms even if they never had the donut-shaped rash. About 60% of people with untreated Lyme disease get arthritis in their large joints, usually knees, elbows and wrists. The arthritis can move from joint to joint and become chronic. About 10 to 20% of people who don't get treatment develop nervous system problems. The most common problems include meningitis (an inflammation of the membranes covering the brain and spinal cord), facial weakness (Bell's palsy) or other problems with nerves of the head, and weakness or pain (or both) in the hands, arms, feet and/or legs. These symptoms can last for months, often

shifting between mild and severe. The heart beat also can be affected in Lyme disease, with slowing down of the heart rate and fainting. The effect on the heart can be early or late.

How is Lyme disease diagnosed?

Lyme disease can be fairly easy to diagnose when someone gets the classic rash. It is much harder to diagnose without the rash because its other symptoms resemble other diseases, like flu. To help diagnose these cases, doctors can have patients' blood tested for antibodies to the Lyme disease bacteria.

How is Lyme disease treated?

Prompt treatment of early symptoms with certain antibiotics can prevent later, more serious problems. **Treatment of Lyme disease in its later stages has not been standardized.**

How can you prevent Lyme disease?

- The only known way to get Lyme disease is from the bite of an infected deer tick. The best way to prevent Lyme disease is to avoid areas where the deer ticks are likely to be found. If you live in or visit a high-risk area, you should follow these precautions:
- Wear a long-sleeved shirt and long pants, and tuck your pant legs tightly into your socks. (Light colors will help you spot the ticks on your clothes before they reach your skin.) Stay to the middle of paths.
- Use insect repellents that contain DEET on your clothes or exposed skin, or those that contain permethrin on your clothes. Read labels carefully. Use products with no more than 10-15% DEET on children and no more than 30-35% DEET on adults. Do not use insect repellents on infants. Wash skin thoroughly after returning indoors. Rare but serious reactions to repellents can occur.
- Check for ticks every day. Their favorite places are on the legs, in the groin, in the armpits, along the hairline, and in or behind the ears. The ticks are tiny, so look for new "freckles."
- Remove any ticks promptly using fine point tweezers. The tick should not be squeezed or twisted, grasp it close to the skin and pull straight out with steady pressure.
- Know the symptoms of Lyme disease. If you have been someplace likely to have ticks between May and early autumn and you develop Lyme disease symptoms, especially if you get a rash, see a doctor right away.

Is there a vaccine for Lyme disease?

LYMERix., a vaccine for Lyme disease approved in 1998 by the Food and Drug Administration (FDA), was removed from the market by the manufacturer in February 2002. The company stated that sales of the vaccine were poor. There are no other Lyme disease vaccines approved for use in humans.

Where can you get more information?

- Your doctor, nurse, clinic or local board of health
- The Mass. Department of Public Health, Division of Epidemiology and Immunization at (617) 983-6800 or toll-free at 1-888-658-2850 or on the MDPH Website at <http://www.mass.gov/dph>
- Massachusetts Poison Control Center (concerning adverse reactions to insect repellents) (617) 232-2120 (Boston) or 1-800-682-9211 (other areas in Massachusetts) or 1-888-244-5313 (hearing impaired).

March 2002